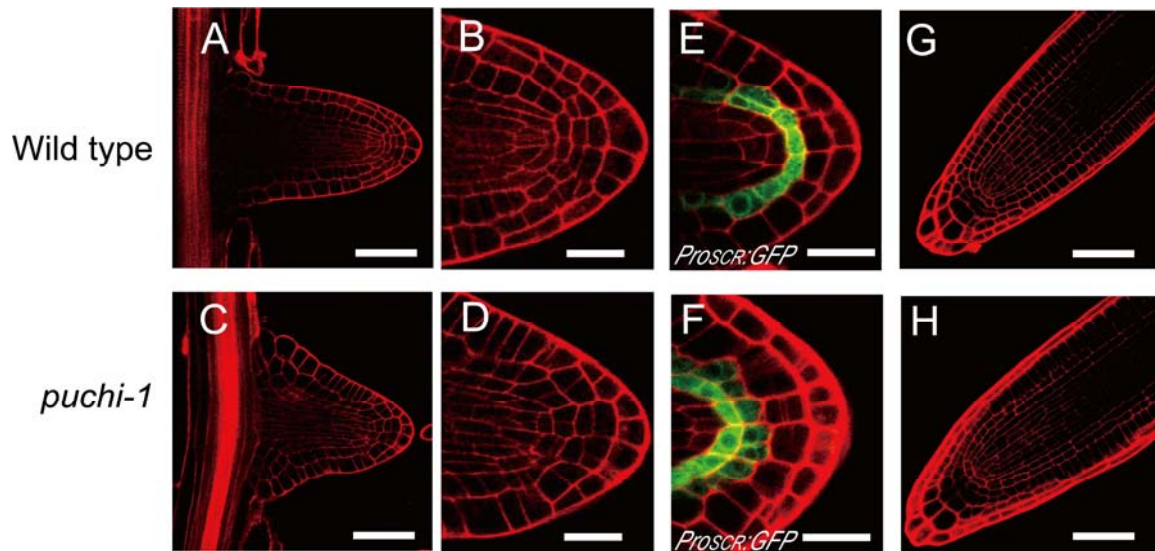


## Supplemental Figure 1



### Supplemental Figure 1. The Structure of the LR Meristem in the *puchi-1* Mutant

(A) to (D) Cellular organization in the LR meristems of wild type (A) and *puchi-1* (C) shortly after the emergence from the parental root. (B) and (D) are magnified images of (A) and (C), respectively, to show cellular organization around the quiescent center.

(E) and (F) *ProSCR:GFP* expression in the LR meristems shortly after the emergence from the parental root of wild type (E) and *puchi-1* (F).

(G) and (H) The meristems in mature LR roots (more than 5 mm long) of wild type (G) and *puchi-1* (H).

Bars in (A),(C),(G), and (H) = 50  $\mu$ m, whereas bars in (B) to (F) = 20  $\mu$ m.