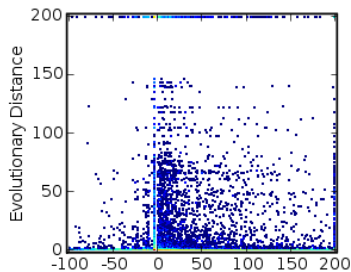
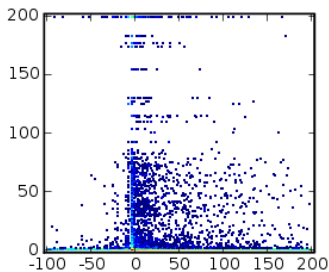


Minnesota Soil

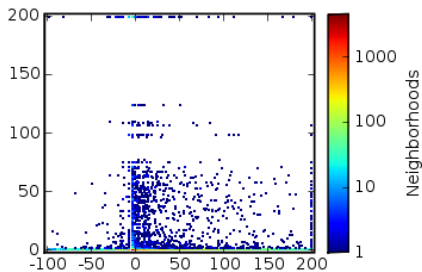
40 bit cutoff



60 bit cutoff



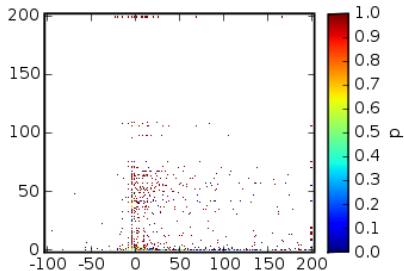
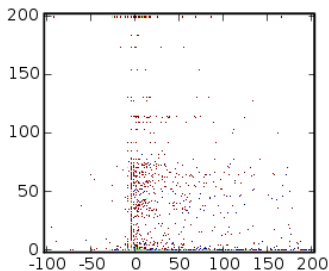
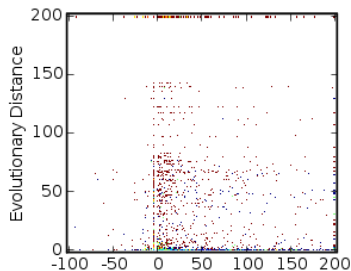
80 bit cutoff



Neighbors

1000
100
10
1

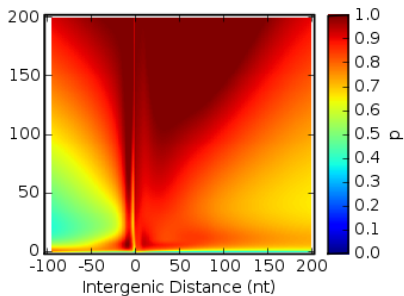
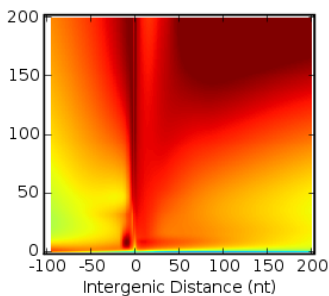
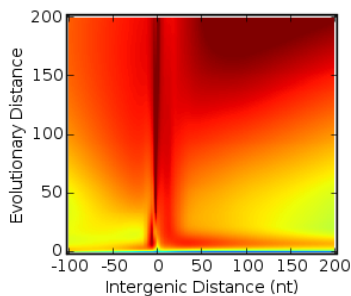
A



ρ

1.0
0.9
0.8
0.7
0.6
0.5
0.4
0.3
0.2
0.1
0.0

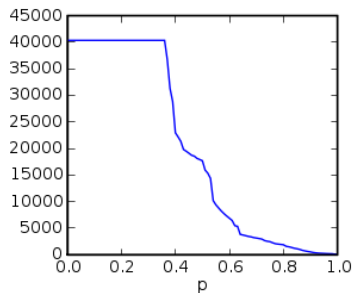
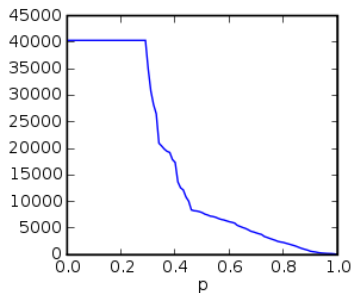
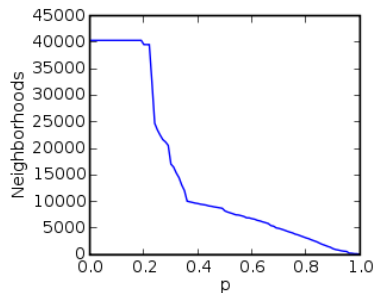
B



ρ

1.0
0.9
0.8
0.7
0.6
0.5
0.4
0.3
0.2
0.1
0.0

C



D

Neighbors

ρ

ρ

ρ