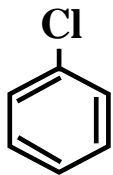


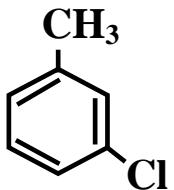
Signal agonists



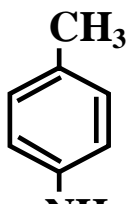
benzene



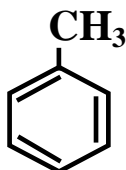
chlorobenzene



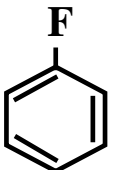
m-chlorotoluene



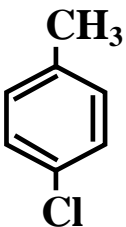
p-toluidine



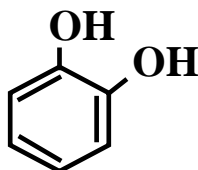
toluene



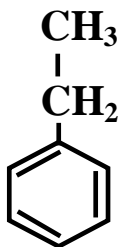
fluorobenzene



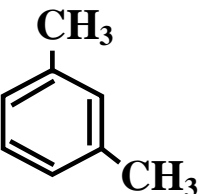
p-chlorotoluene



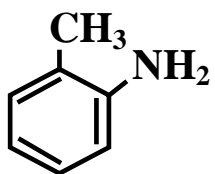
catechol



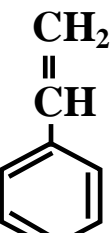
ethylbenzene



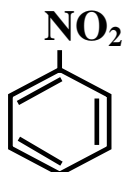
m-xylene



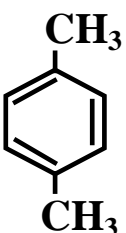
o-toluidine



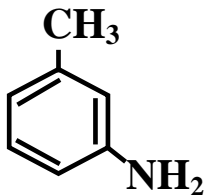
styrene



nitrobenzene

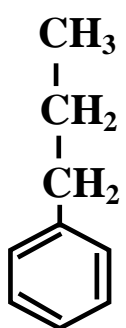


p-xylene

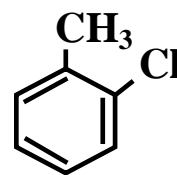


m-toluidine

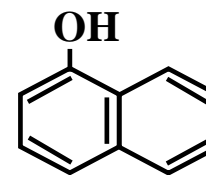
Signal antagonists



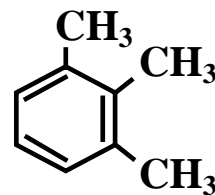
propylbenzene



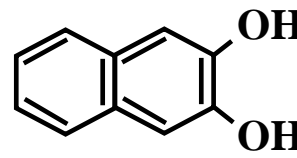
o-chlorotoluene



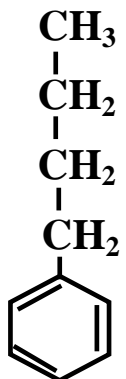
1-naphthol



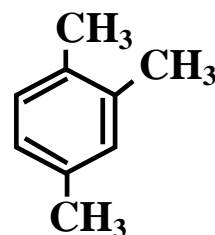
1,2,3-trimethylbenzene



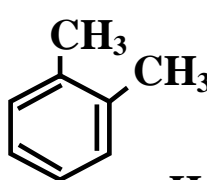
2,3-dihydroxynaphthalene



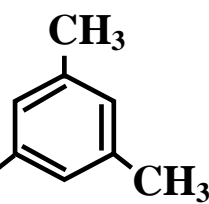
butylbenzene



1,2,4-trimethylbenzene



o-xylene



1,3,5-trimethylbenzene