

Supplemental data

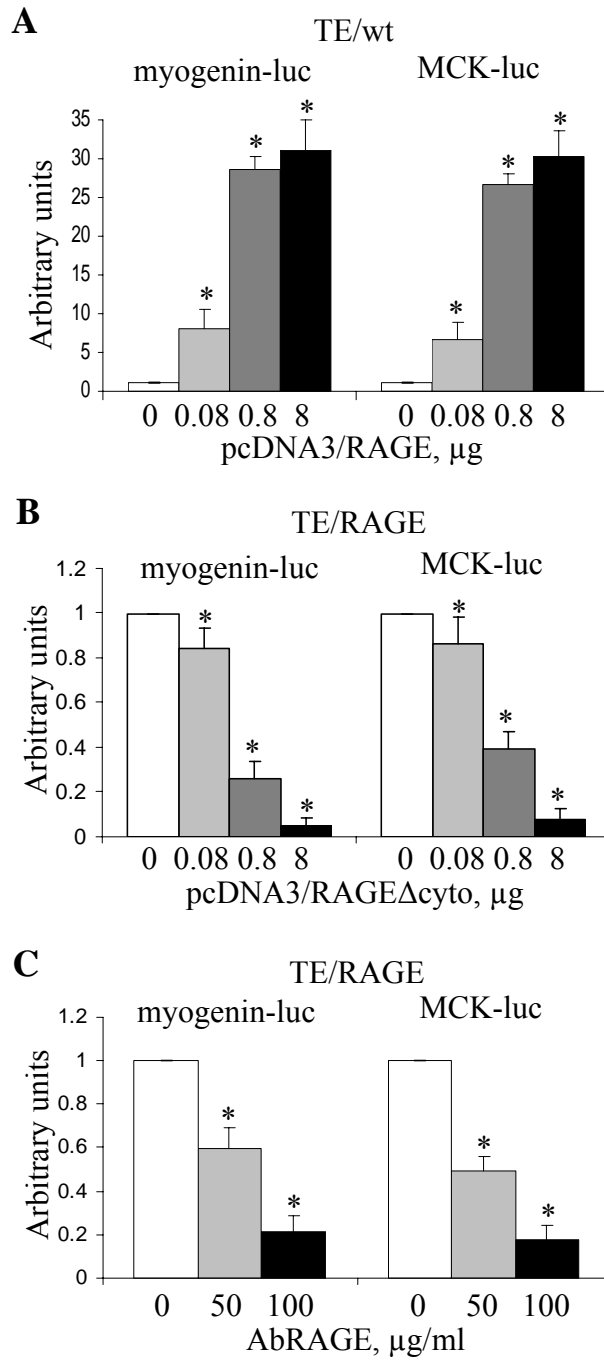
Supplement Fig. 1. The ability of TE671/wt cells to undergo myogenic differentiation upon transfection with RAGE depends on the amount of RAGE expressed and of functionally active RAGE. (A) TE671/wt cells in GM were transiently transfected with increasing amounts of RAGE expression plasmid as indicated, and then transiently transfected with myogenin-luc or MCK-luc. (B) TE671/RAGE cells were transiently transfected with increasing amounts of RAGE Δ cyto expression plasmid as indicated, and then transiently transfected with myogenin-luc or MCK-luc. (C) TE671/RAGE cells were transiently transfected with myogenin-luc or MCK-luc and then cultivated in DM in the presence of increasing amounts of a polyclonal anti-RAGE antibody or equivalent amounts of non-immune IgGs. *Significantly different from control (n = 3, p<0.05).

Supplement Fig. 2. TE671/RAGE cells are hypertrophic compared with TE671/wt, TE671/RAGE Δ cyto cells. (A) TE671/wt, TE671/RAGE Δ cyto and TE671/RAGE cells were cultivated in DM for 3 days, treated with DAPI to detect nuclei and analyzed by phase contrast microscopy. Sporadic multinucleated cells can be detected in cultures of TE671/RAGE cells in DM. (B) TE671/wt, TE671/RAGE Δ cyto and TE671/RAGE cells were cultivated in DM for 48 h in the absence or presence of the p38 MAPK inhibitor, SB203580, and subjected to FACS analysis to measure cell size. Whereas TE671/wt and TE671/RAGE Δ cyto cells show a similar size, TE671/RAGE cells exhibit increased cell size. However, upon treatment with SB 203580 the three clones show a similar cell volume. One representative experiment of three with similar results is shown (A,B). Bars in A = 100 μ m.

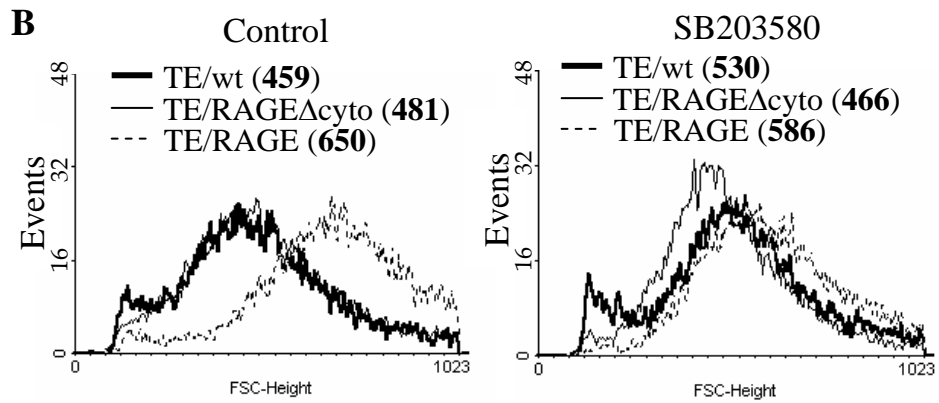
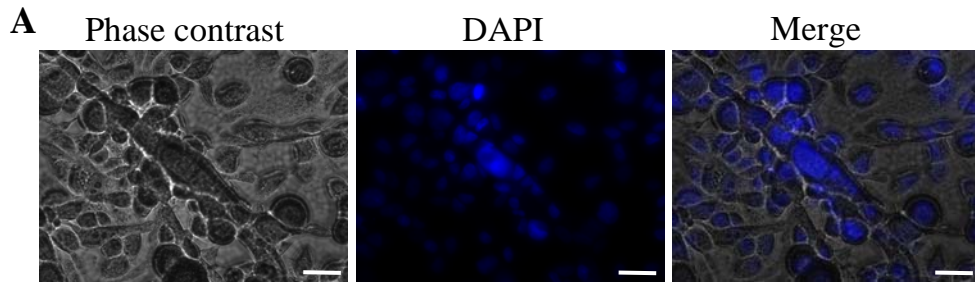
Supplement Fig. 3. CCA (embryonal type) and RMZ-RC2 (alveolar type) RMS cells express RAGE. As investigated by immunofluorescence. (A-C) CCA, RMZ-RC2 and TE671 cells were cultivated in GM and subjected to immunofluorescence using an anti-RAGE extracellular domain antibody. Nuclei

were stained with DAPI (A'-C'). One representative experiment of three with similar results is shown.

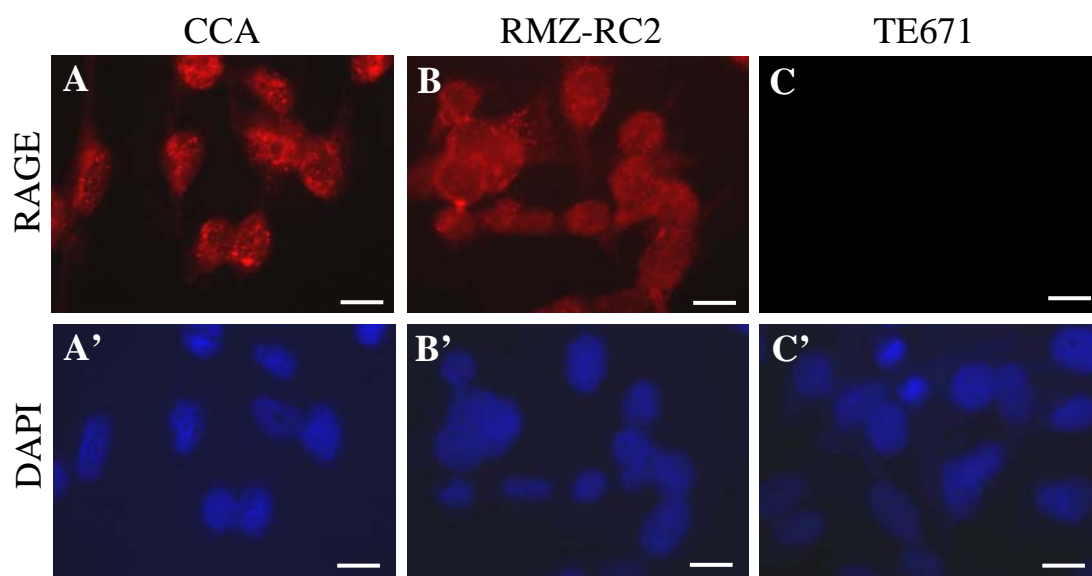
Bars = 20 μm .



Suppl. Fig. 1



Suppl. Fig. 2



Suppl. Fig. 3