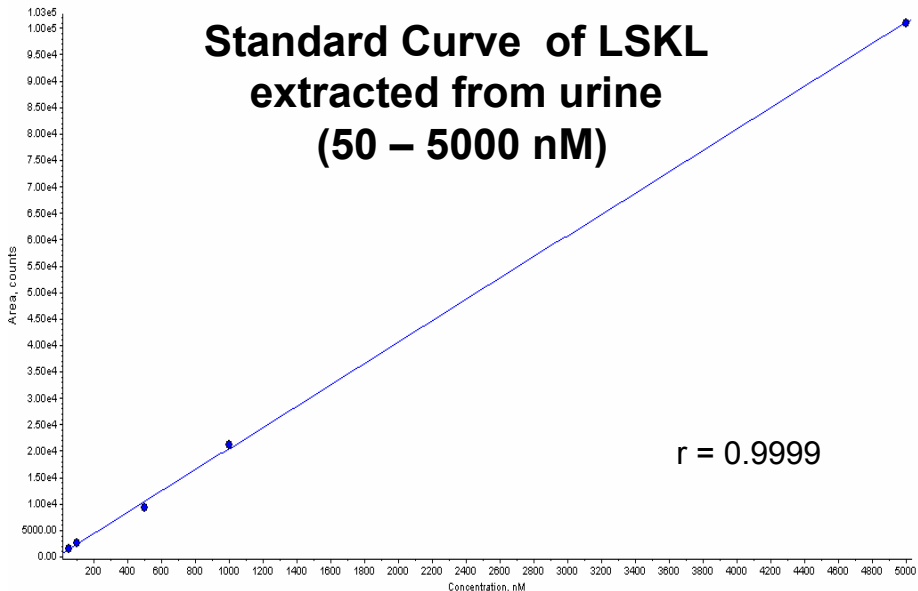


Detection of LSKL peptide in 24 hr urines of Sham and DAAC Rats

Standard Curve of LSKL extracted from urine (50 – 5000 nM)



Animal	Sample	Analyte peak area (counts)	Analyte peak height (cps)
1	Sham + LSKL	0	0
2		425	104
3		0	0
4		0	0
5	DAAC + LSKL	338	84.7
6		71.9	69.3
7		94.3	52.8
8		229	84.5
Standard Curve	0	0	0
	50 nM	1,460	276
	100 nM	2,680	315
	500 nM	9,360	1,210
	1000 nM	21,200	2,440
	5000 nM	101,000	11,700

50 nM LSKL standard extracted from urine

