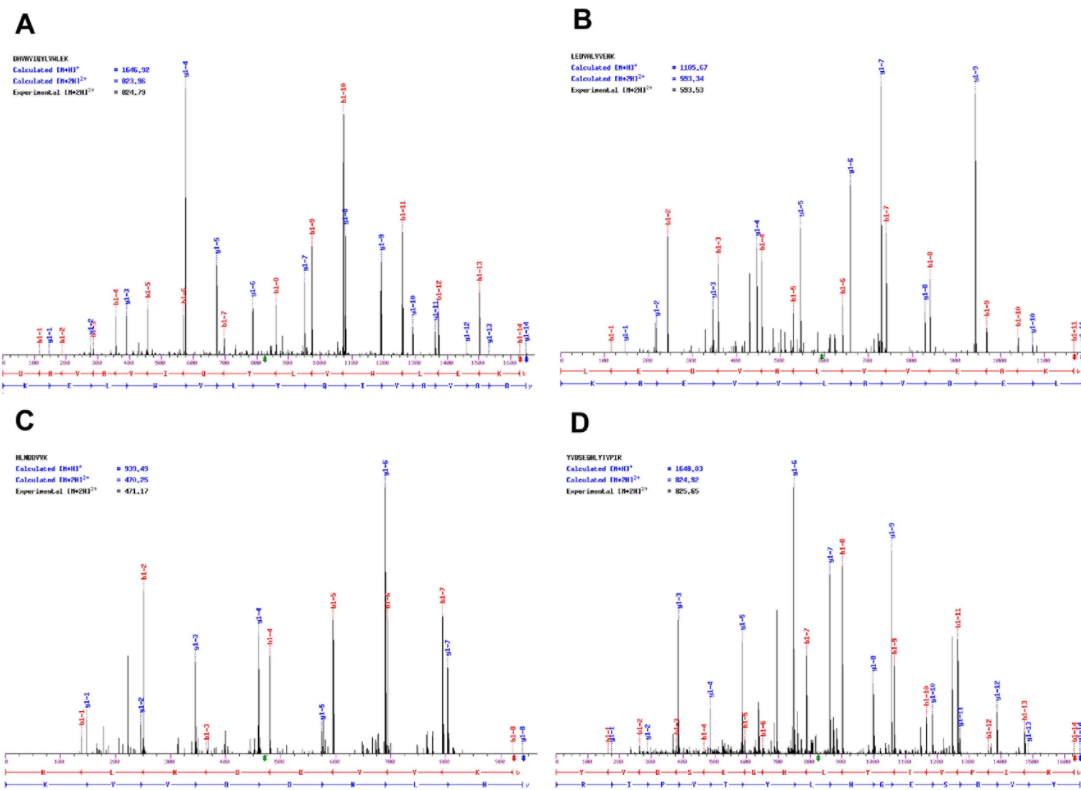


Supplementary Figure 1



E

MSGGK**YVDSEGHLYTVPIREQ**NIYK**PNNKAMADEVNEKQVYDAHTKE** IDLVNRDPKHLN
 DDVVKIDFEDVIAE**PEGTHSFDGIWKASFTTFTVTKYWFYR**LLSTIFGIPMALIWGIYFA
 ILSFLHIWAVVPCIKSFLIEIQICISRVYSIYVHTFCDPLFEAIGK**IFSNIR**ISTQEEI

F

MAQAYWQCYPWLVLCCACAWSYPGPESLGREVDRCSTNPPRLPVTAVNTTMRLAALRQQ
 MEK**SNLSAYIIPDTDAH**MSEYIGKHDER**RAWISGFTGSAGTAVVTKKKA**AVWTD**SR**YWTQ
AERQMDCNWELHKEVSISSIVAWILAEVPDGENVGFDPFLFSVGSWENYDQELQDSNRHL
LSITTNLVDVAWG**SERPPVPSQPIYALPKEFTG**STWQEKV**SAIR**SYMQNHTMAPTGVLLS
 ALDETAWLFLNLR**SSDIPYNPFY**SYTL**TDSSIRL**LVNKS**RFSLET**LQYLN**TNCTL**PMCV
 QLEDYSQIR**DGVKAYASGNV**KILIGISY**TTYGVYDVI**PKEKLVTE**TYSPVMLIKAVKNSK**
EQALLKASHVRDAVAVIQYLVWLEKNVPKGT**VDEFSGAEHIDQLRRNENFSSG**PSFETIS
ASGLNAALAHYSPTKELHRKLSLDEMYLVD**SGGQYWDGTTDITRTVHWGTP**TA**FQKEAYT**
RVLMGNIDLSRLVFPAA**TSGRVVEAFAR**RALWEVGLNYGHGTGHGIGNFLCVHEWPVGFQ
 YNNMAMAK**GMFTSIEPGYYQDGEFGIRLEDVALVVEAKTKYPGTYLTFELVSFVPYDRNL**
IDVSLLSPEQLQYLNRYYQTIRE**NIGPELQRRQLLEEF**AWLERHTEPLSASAPHTTSLAS
 MWVASALAILSWSC

Supplementary Figure 1. MS/MS spectra of peptides and sequence coverage for rat caveolin-1 and APP found concentrated in isolated caveolae. Four MS/MS spectra of the doubly charged tryptic peptides, A) peptide of rat Caveolin-1, HLNDVVK (position 58 - 65), B) peptide of rat Caveolin-1, YVDSEGHLYTVPIR (position 6 - 19), C) peptide of rat APP DAVAVIQYLWLEK (position 372 - 385) and D) peptide of rat APP, LEDVALVVEAK (position 568 - 578). The peptide coverage of the fragment ions corresponding to their theoretical peptide sequences are 92.9%, 73.1%, 80.8% and 90%, respectively. E) Amino acid sequence coverage of rat caveolin-1 (NCBI: gi17017233). 17 unique tryptic peptides identified; 57.3% protein sequence coverage. F) Amino acid sequence coverage of rat APP (NCBI: gi13560983). 49 unique tryptic peptides identified; 61.6% protein sequence coverage. All identified peptides of both proteins are highlighted in blue in panels E and F.