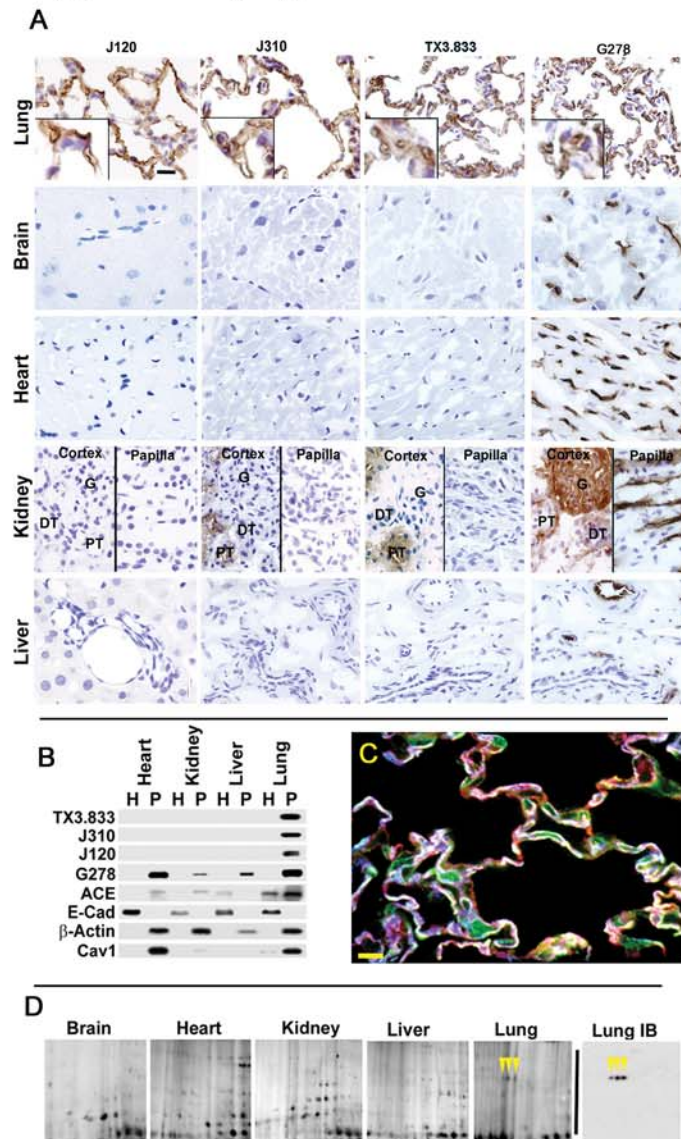


Supplementary Figure 3



Supplementary Figure 3. Antibody specificity and antigen expression analysis. (A) Cryosections (TX3.833, J310, G278) or paraffin-embedded (J120) sections of multiple rat tissues were immunostained with indicated antibodies. Insets, 2.5X magnification. G, glomerulus; DT, distal tubule; PT, proximal tubule. Bar = 2 μ m. (B) Western analysis of subfractions of various rat organs (2 μ g per lane) using the indicated antibodies. (C) Cryosections of rat lung were labeled with caveolin-1 antibodies (green), G278 (red), and TX3.833 (blue) to reveal significant triple co-localization (white signal). Bar = 10 μ m. (D) Select region of silver stained 2D gels containing the three adjacent protein spots corresponding to APP in lung but not other organs as indicated. "Lung IB" indicates immunoblot of 2D gel from lung using TX3.833. H, whole organ homogenate; P, silica-coated luminal endothelial plasma membranes; V, caveolae; P-V, silica coated luminal endothelial plasma membranes stripped of caveolae; ACE, angiotensin converting enzyme; Cav1, caveolin-1 antibody.