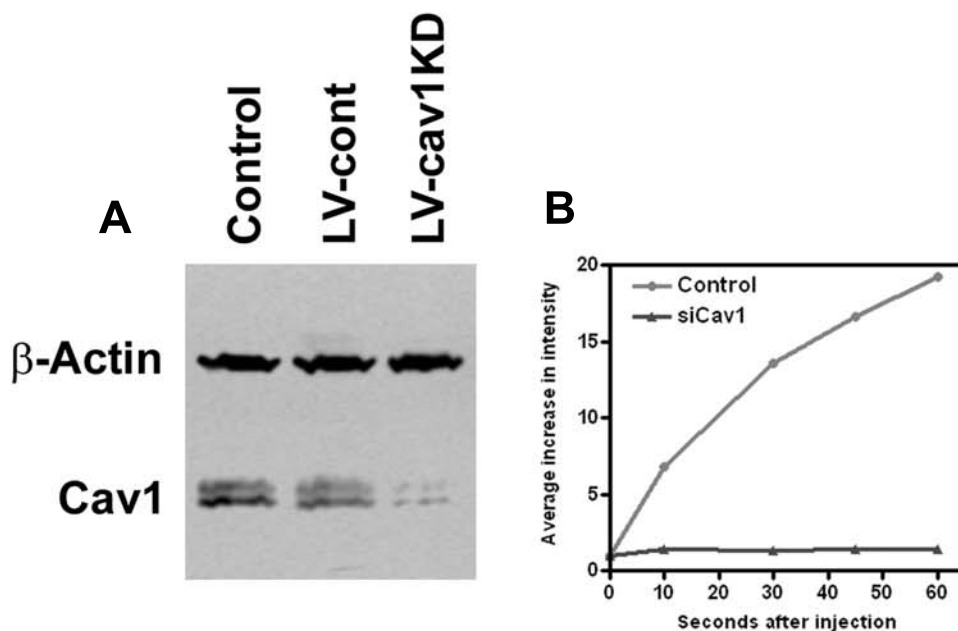


Supplementary Figure 4



Supplementary Figure 4. Assessment of caveolin-1 knockdown in rat tissue. (A) Western analysis of implanted lung untreated (Control) or treated with either control lentivirus (LV-cont), or lentivirus expressing rat caveolin-1 shRNA (LV-cav1KD). There is a $\geq 90\%$ decrease in caveolin-1 expression in LV-cav1KD tissue relative to both control tissues. (B) Graph of the uptake of mAPP over time in control and caveolin-1 knockdown lung tissues. Fluorescence intensity was quantified from low magnification images and plotted versus time.