

## Additional file1

**5' RACE of Zebrafish *GATA-2* mRNA.** To determine if zebrafish *GATA-2* locus, uses alternative first exon 5' RACE was performed using FirstChoice RLM-RACE Kit (Ambion, Inc., Cat# 1700) and combined with *GATA-2* gene specific 3' reversed primers which are located in the 2<sup>nd</sup> exon of zebrafish *GATA-2* and downstream of the start codon. The sequences of the 3' reversed primers are:

Outer 3' reversed primer: 5'-ACAATTACATGGAGCCCATGGC-3';

Inner 3' reversed primer: 5'-ATCAGTCTCGATGGATGGCCCA-3'

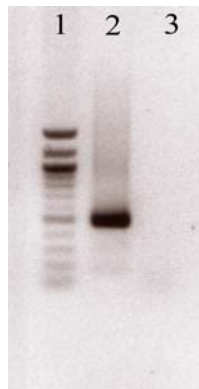


Figure S1. Single RT-PCR product was observed after the nested PCR with commercial 5'RACE primer and zebrafish *GATA-2* inner 3' reversed primer. Sequencing results shown that the RT-PCT product is as same as that previously reported. 1, 100bp ladder from New England Biolabs, Inc. 2, RT-PCR product after the 2<sup>nd</sup> round nested PCR. 3, Negative control for RT-PCR.