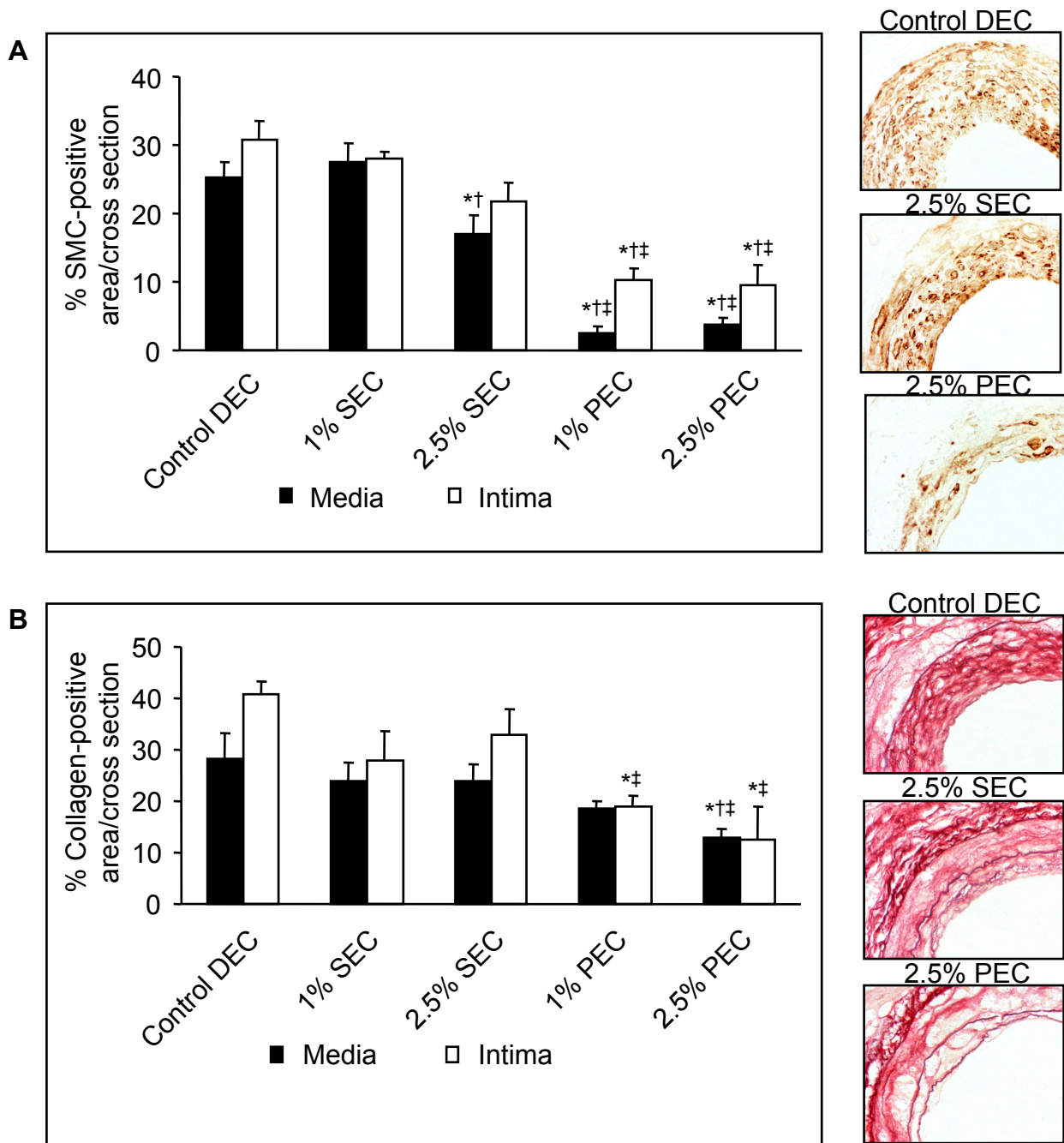


SUPPLEMENTAL ONLINE FIGURE 2



Supplemental online Figure 2. A: Percentage of medial (close bars) and intimal (open bars) α -Smooth Muscle (SM) actin-positive area of cuffed femoral arteries treated with increasing concentrations of sirolimus or paclitaxel 14 days after drug-eluting cuff (DEC) placement. SMC-positive area was quantified by image analysis using six sections in each cuffed artery and expressed in percentage of medial or intimal area. Insert: α -SM actin staining; arteries locally treated with a 1% and 2.5% paclitaxel-eluting cuff (PEC) show a strong decrease both in medial and intimal SMC-positive area (magnification 400x). **B:** Percentage of Sirius red-positive area as quantified by image analysis using six sections in each cuffed artery and expressed in percentage of medial or intimal Sirius red-positive area. Insert: Sirius red stain; Paclitaxel perivascular treatment leads to a strong decrease in both medial and intimal collagen-positive area (magnification 400x). Mean \pm SEM, n=8. *p<0.05 v Control DEC; †p<0.05 v 1% SEC; ‡p<0.05 v 2.5% SEC. SEC=sirolimus-eluting cuff.