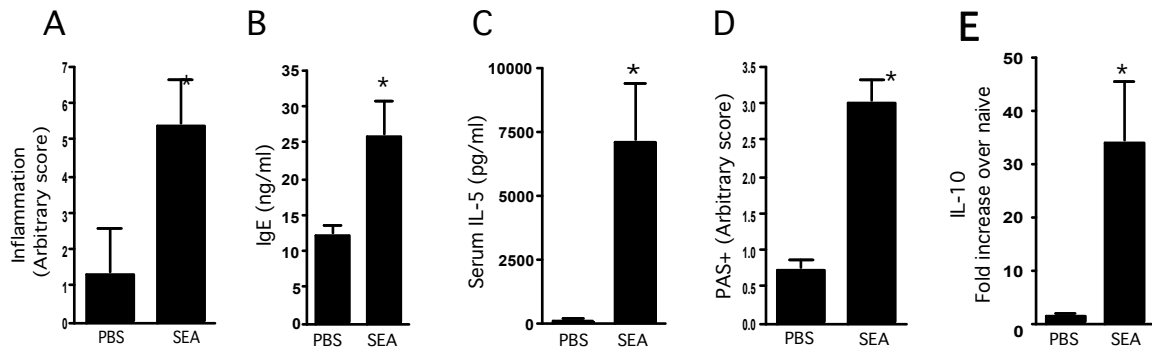
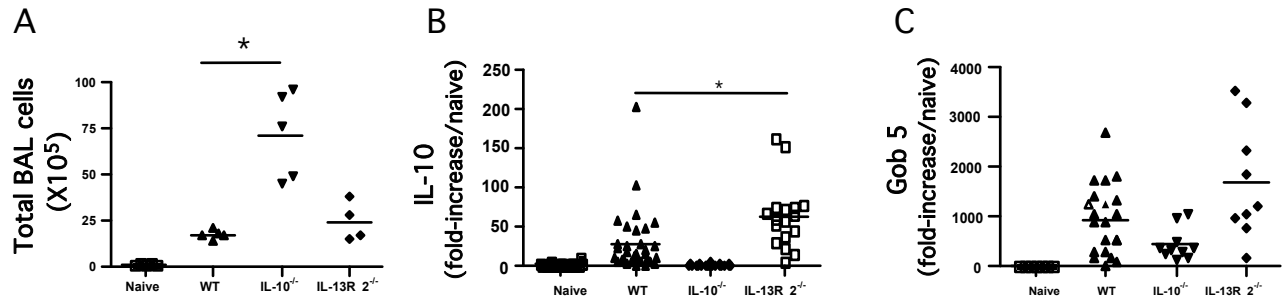
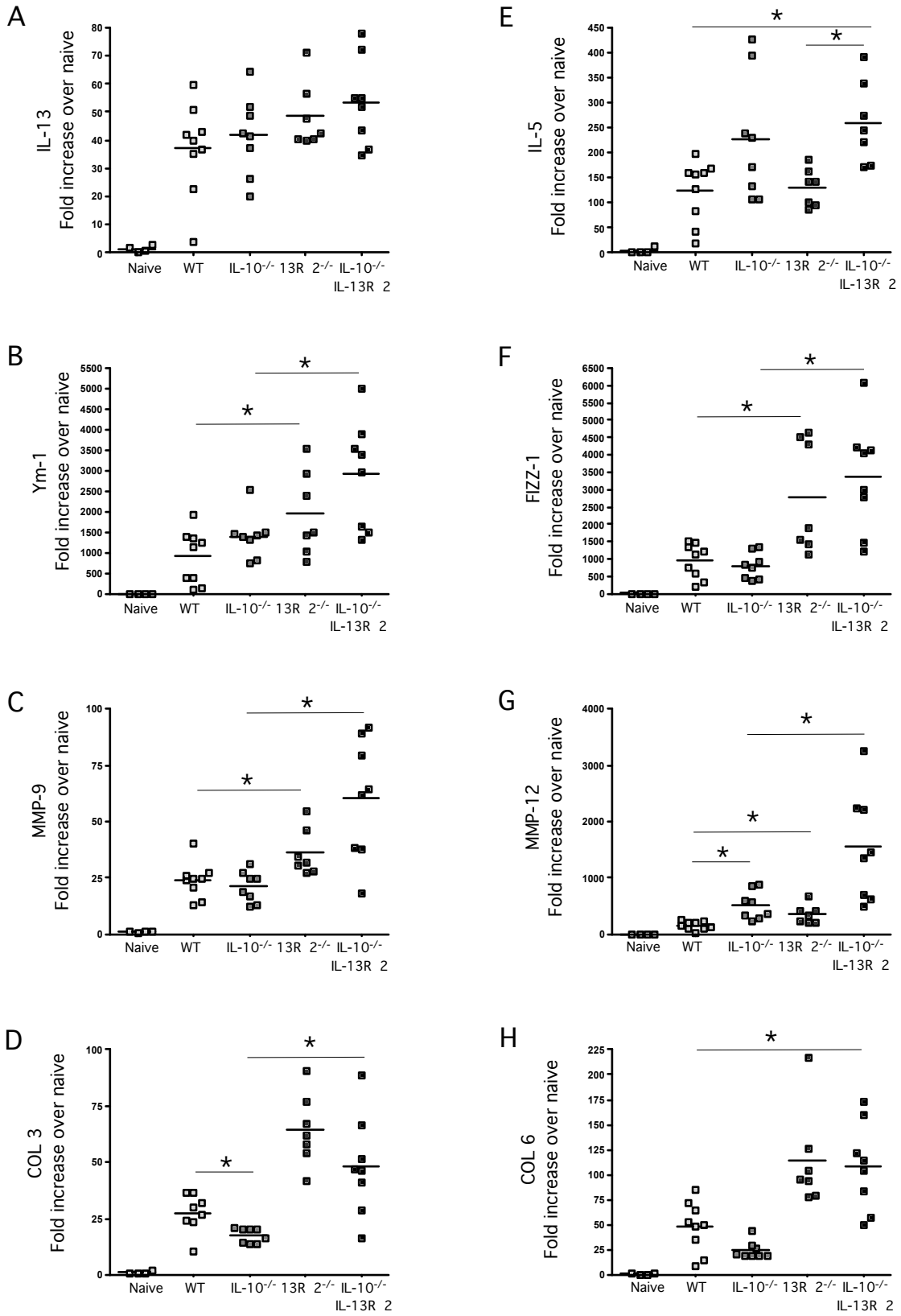


Supplemental Figure 1



Supplementary Figure 2.





Supplementary Figure 1- Th2 polarized SEA-induced airway Inflammation.

Animals were sensitized and challenged as in Figure 1. Animals were euthanized 24 hours after the final airway challenge. * Indicates P value < 0.05 using a Mann-Whitney test.

- A. 5 μ m sections were cut from paraffin embedded lung tissue and stained with H&E to show cellular infiltration. 5 lungs from each group were scored in a blinded fashion.
- B. Total IgE was measured in the serum by ELISA.
- C. Serum IL-5 was measured in the serum by ELISA, using a Cincinnati cytokine capture assay.
- D. 5 μ m sections were cut from paraffin embedded lung tissue and stained with AB-PAS (Upper panels) showing mucin+ goblet cells lining the airways. 5 lungs from each group were scored in a blinded fashion.
- E. RNA was extracted from liver tissue with IL-10 mRNA quantified by qRT-PCR

Supplementary Figure 2. Elevated BAL infiltrates, but reduced Gob 5 mRNA in IL-10^{-/-} mice. Elevated IL-10 in the absence of IL-13R α 2 following SEA airway challenge.

Animals were sensitized and challenged as in Figure 1. * Indicates P value < 0.05 using a Mann-Whitney test.

- A. Total airway infiltrates recovered in BAL
- B. IL-10 mRNA from lung tissue 24 hours after the final airway challenge.
- C. Gob 5 mRNA from lung tissue 24 hours after the final airway challenge

Supplementary Figure 3. IL-13 regulated genes are up regulated in the absence of IL-10 and/or IL-13R α 2.

Mice were infected with 30 *S.mansoni* cercariae and euthanized at week 8 during the early stages of egg-induced pathology to assess the regulation of IL-13-associated gene expression. RNA was extracted from liver tissue with the following genes analyzed by qRT-PCR. * Indicates P value < 0.05 using a one-way ANOVA.

- A. IL-13
- B. Ym-1
- C. MMP-9
- D. COL-3
- E. IL-5
- F. Fizz-1
- G. MMP-12
- H. COL-6