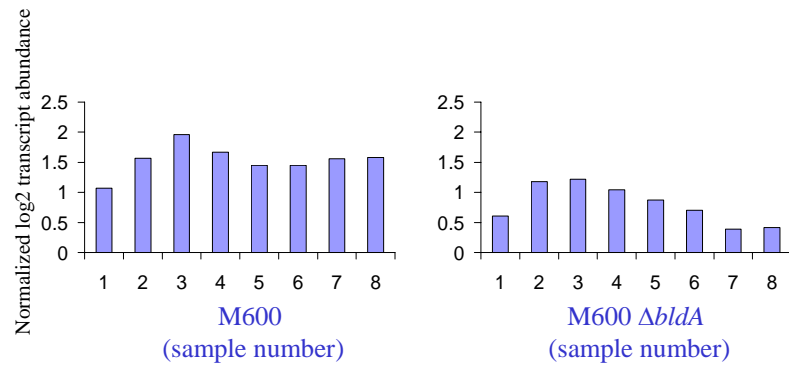


Additional file 9.

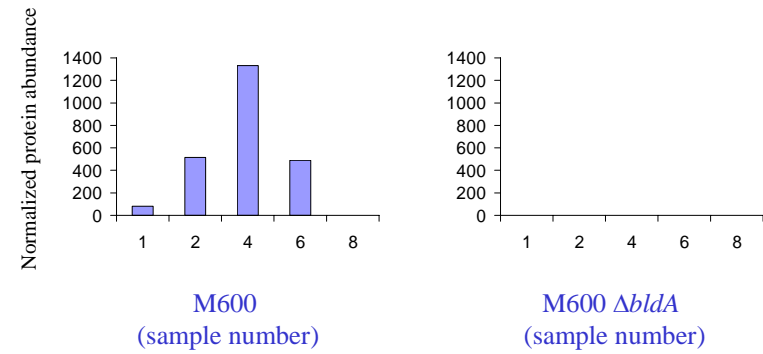
Comparison of transcript and protein abundance profiles for the eleven genes identified by both transcriptome and proteome analyses as being differentially expressed in the  $\Delta bldA$  mutant.

# SCO0499

## Transcript



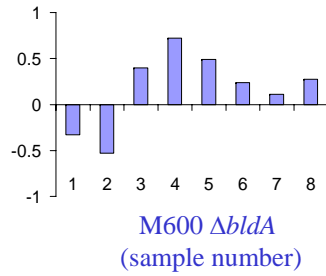
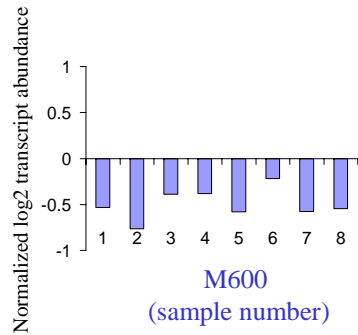
## Protein



Profiles are the average of triplicate experiments for transcript abundance, and duplicate for protein abundance

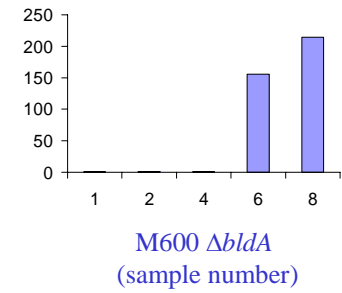
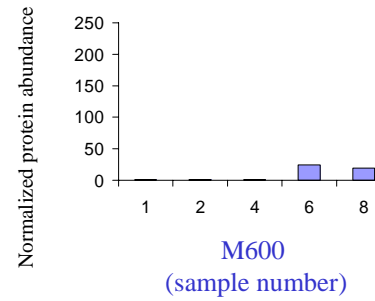
# SCO3285

## Transcript

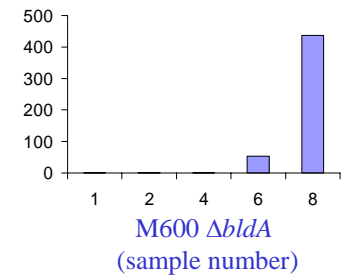
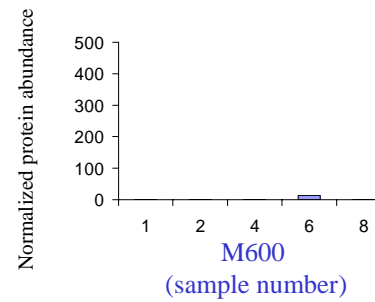


## Protein

### spot 1

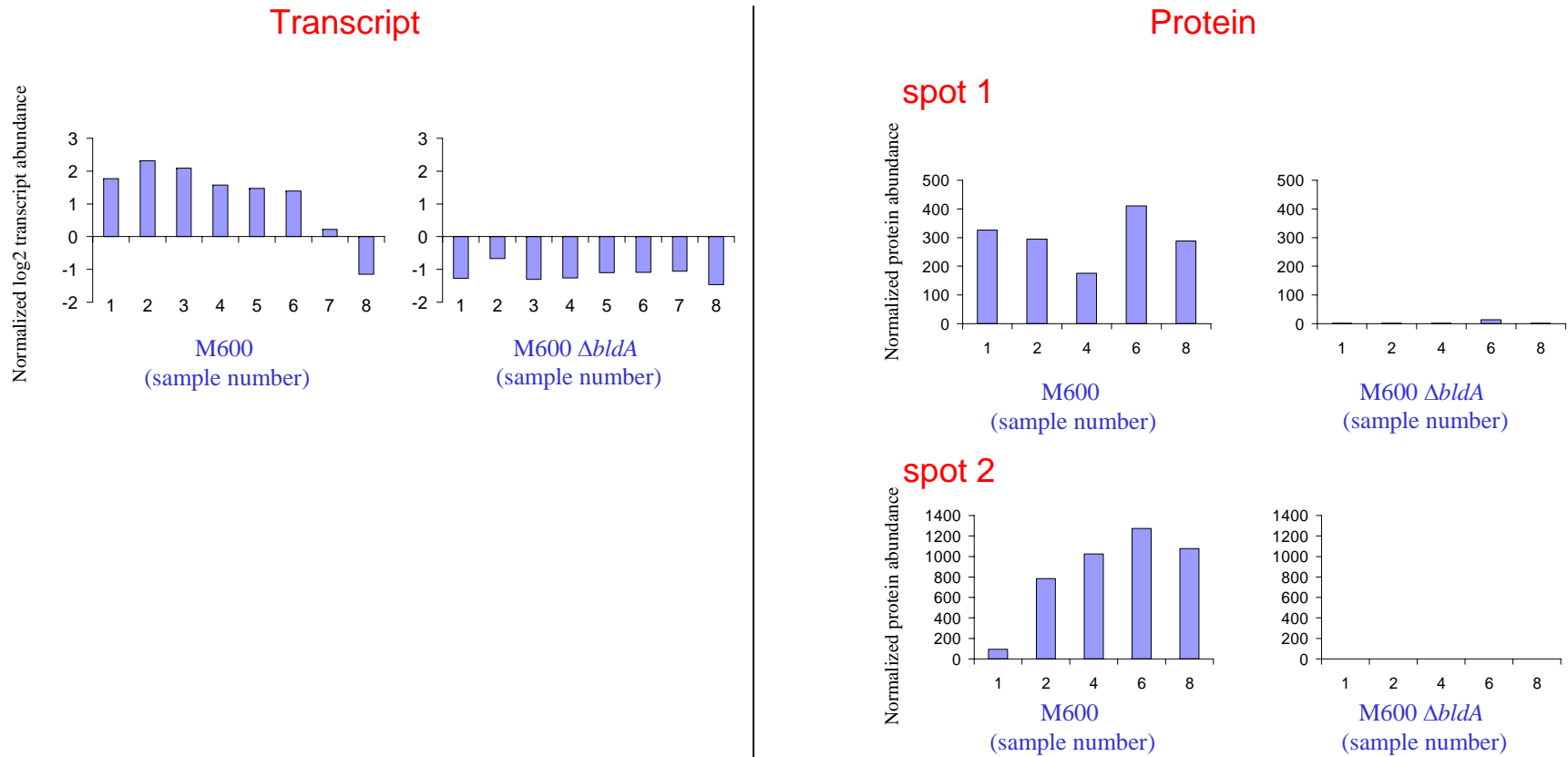


### spot 2



Profiles are the average of triplicate experiments for transcript abundance, and duplicate for protein abundance

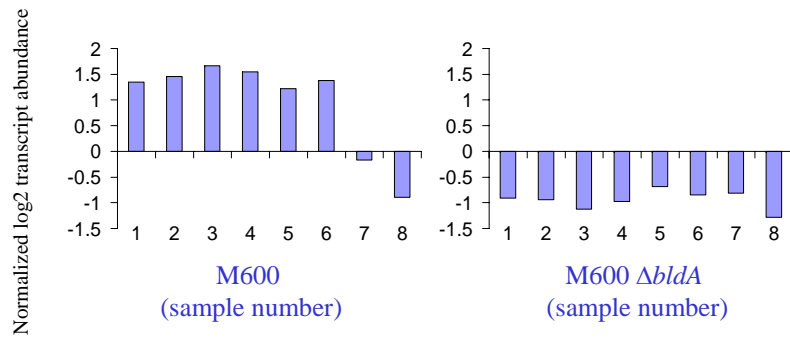
# SCO4252



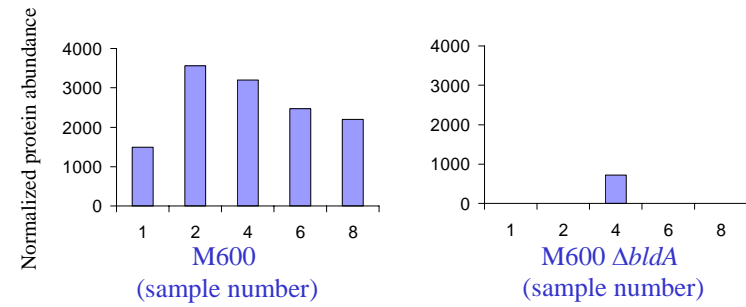
Profiles are the average of triplicate experiments for transcript abundance, and duplicate for protein abundance

# SCO4253

## Transcript



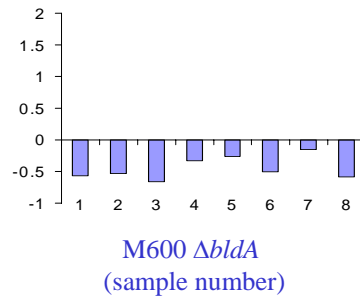
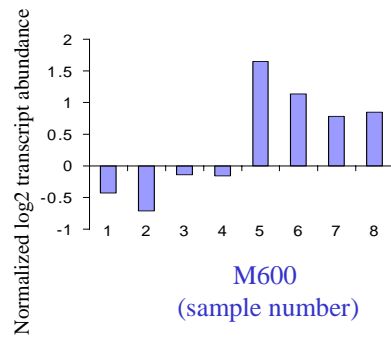
## Protein



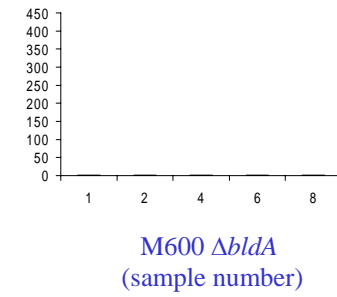
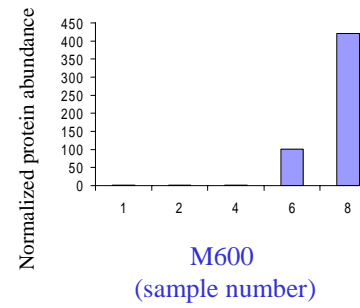
Profiles are the average of triplicate experiments for transcript abundance, and duplicate for protein abundance

# SCO4677

## Transcript



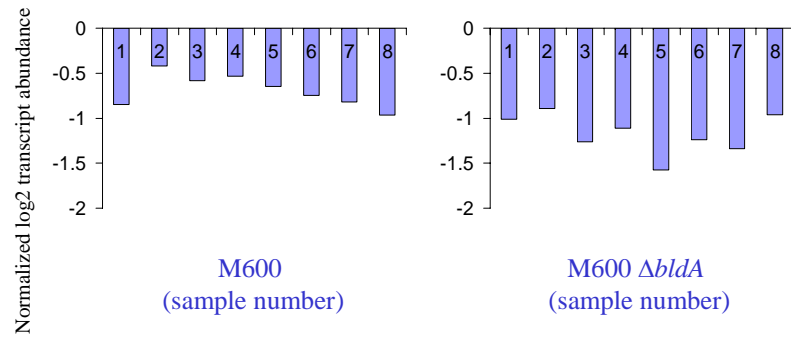
## Protein



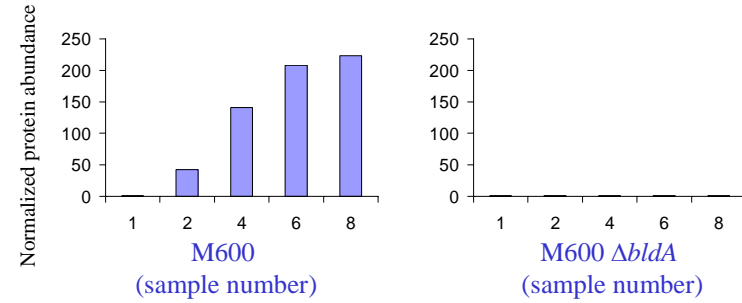
Profiles are the average of triplicate experiments for transcript abundance, and duplicate for protein abundance

# SCO4994

## Transcript



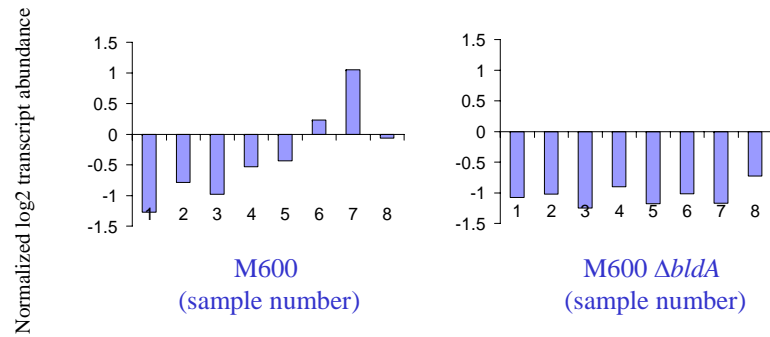
## Protein



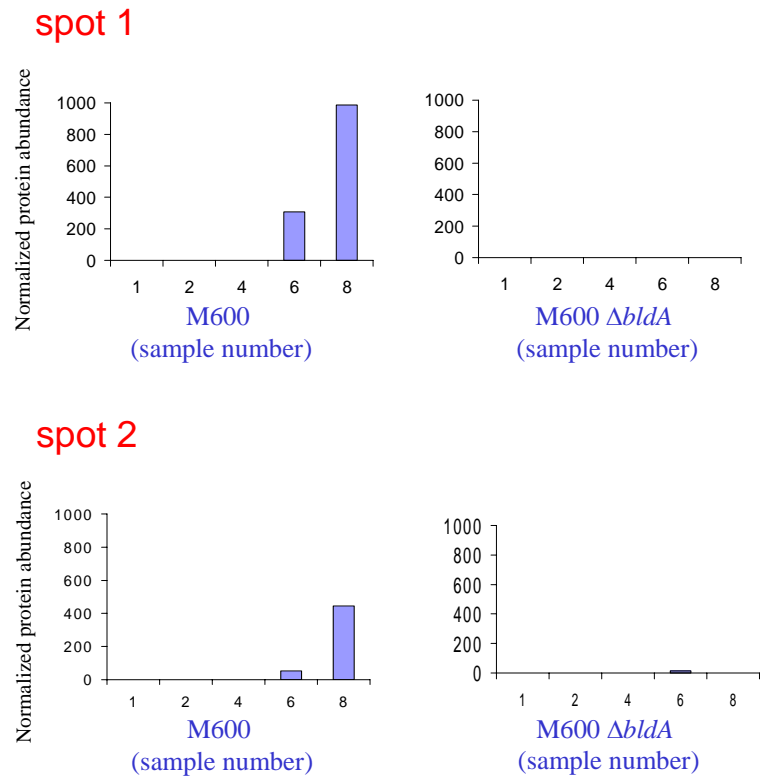
Profiles are the average of triplicate experiments for transcript abundance, and duplicate for protein abundance

# SCO5073

## Transcript



## Protein

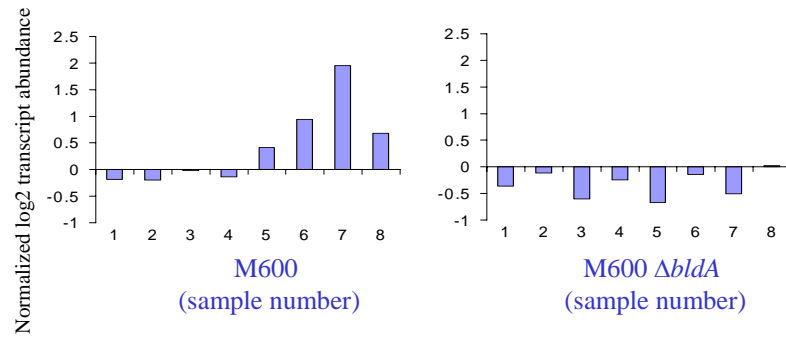


Profiles are the average of triplicate experiments for transcript abundance, and duplicate for protein abundance

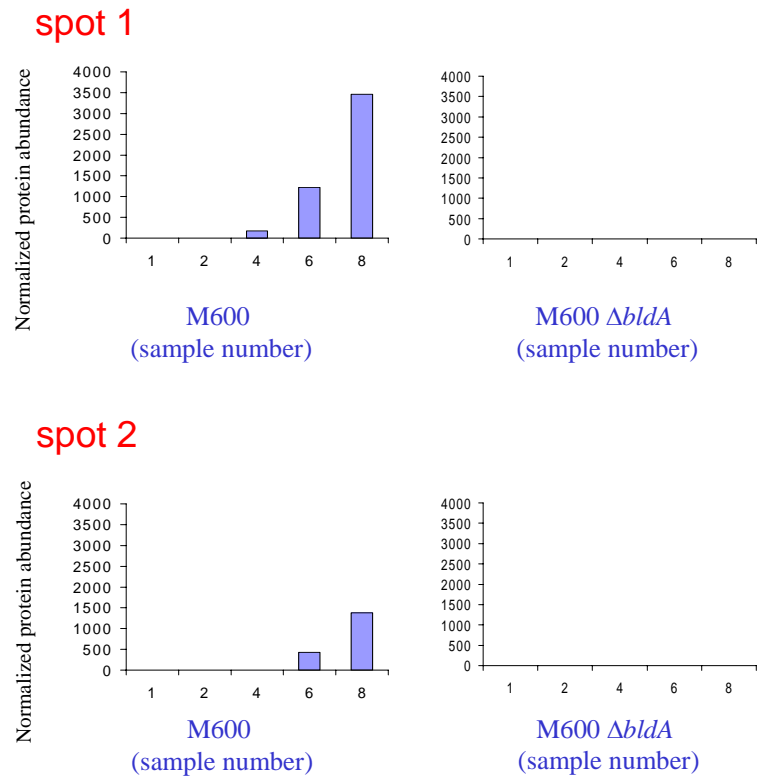


# SCO5079

## Transcript



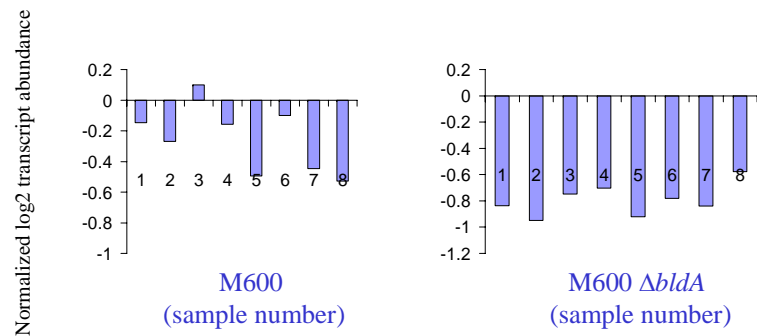
## Protein



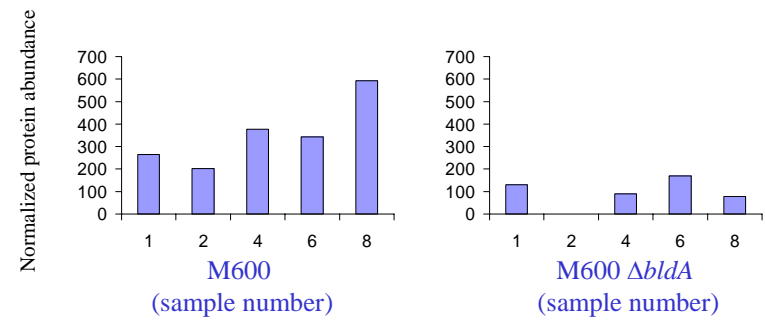
Profiles are the average of triplicate experiments for transcript abundance, and duplicate for protein abundance

# SCO6637

## Transcript



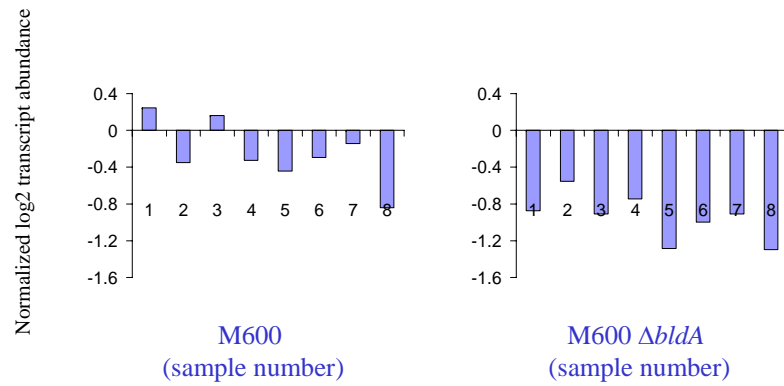
## Protein



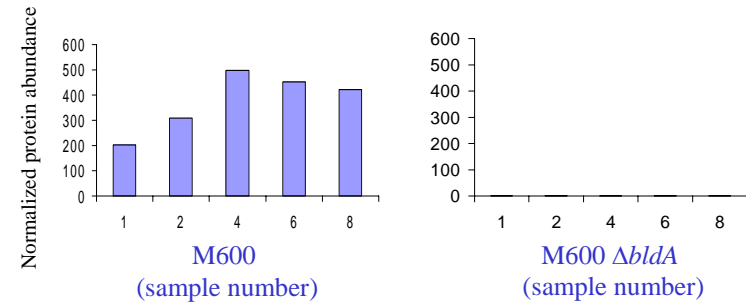
Profiles are the average of triplicate experiments for transcript abundance, and duplicate for protein abundance

# SCO6638

## Transcript



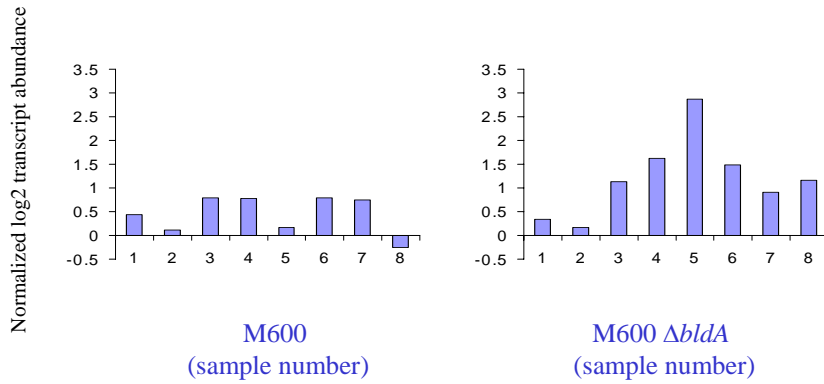
## Protein



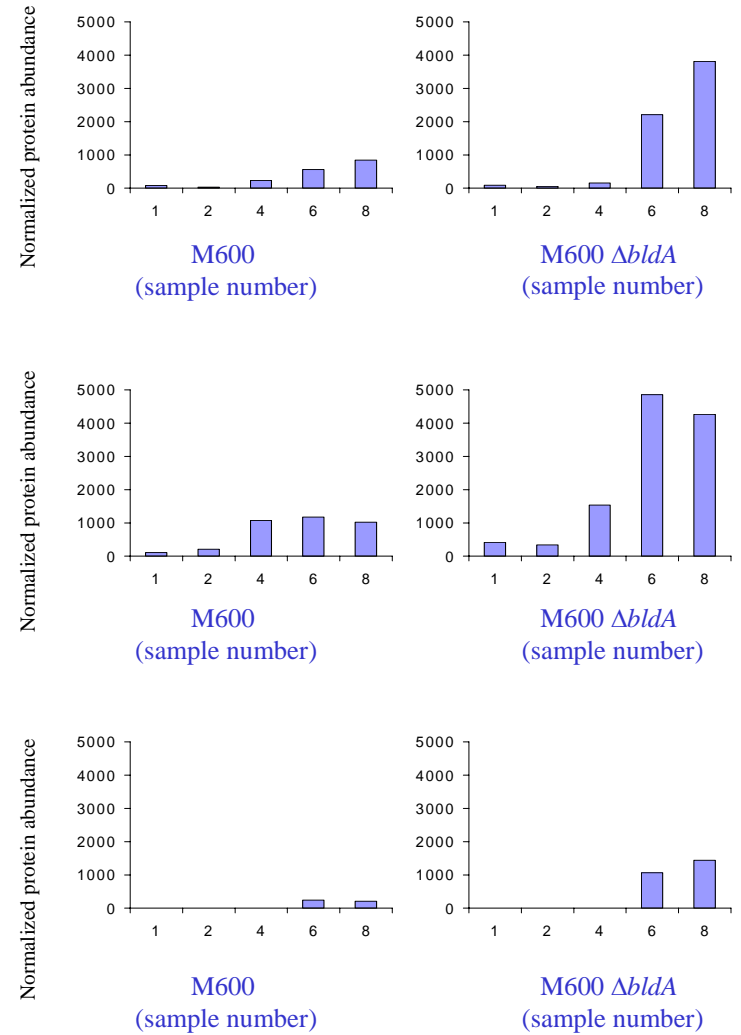
Profiles are the average of triplicate experiments for transcript abundance, and duplicate for protein abundance

# SCO7511

## Transcript



## Protein



Profiles are the average of triplicate experiments for transcript abundance, and duplicate for protein abundance