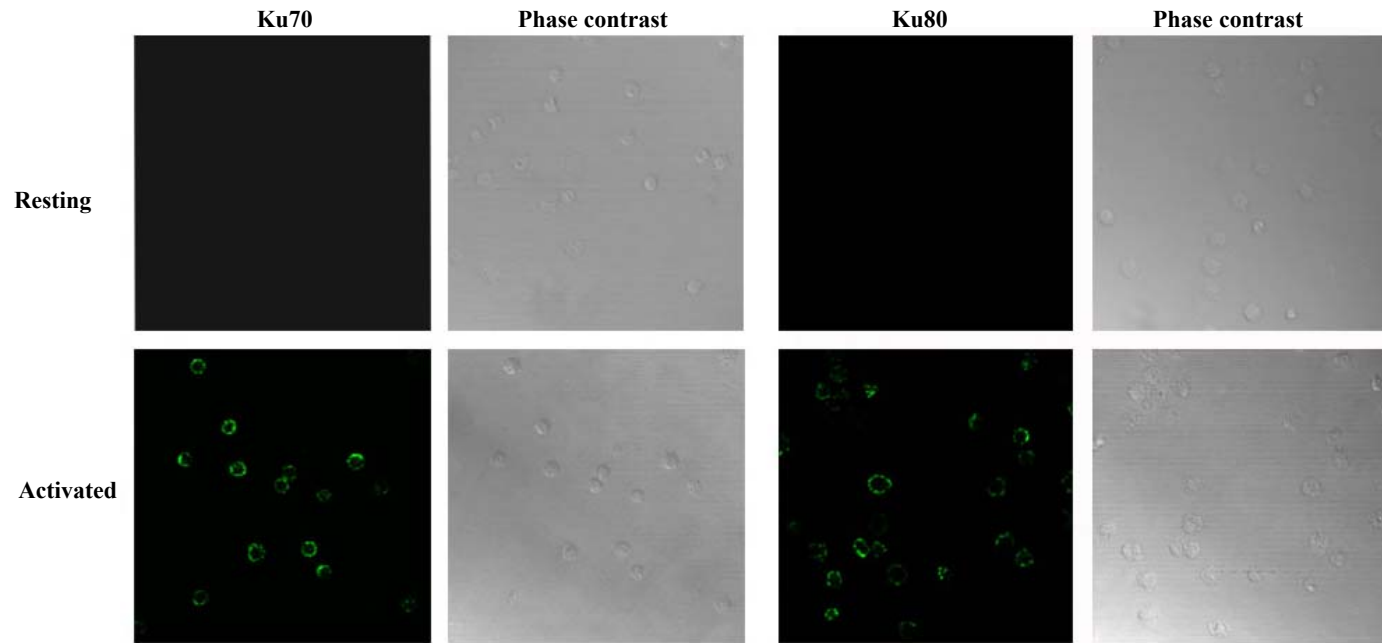


Supplementary figure 1



Supplementary figure 1. Ku cell surface expression is induced during monocytes activation. Living resting or differentiated monocytes (18 hrs in the presence of M-CSF) stained with anti-Ku70 or anti-Ku80 antibody were plated onto L-polylysine-coated coverslips and fixed. The confocal laser scanning micrographs show horizontal section of cells. Digital images were taken at x 40 magnification (zoom 3)