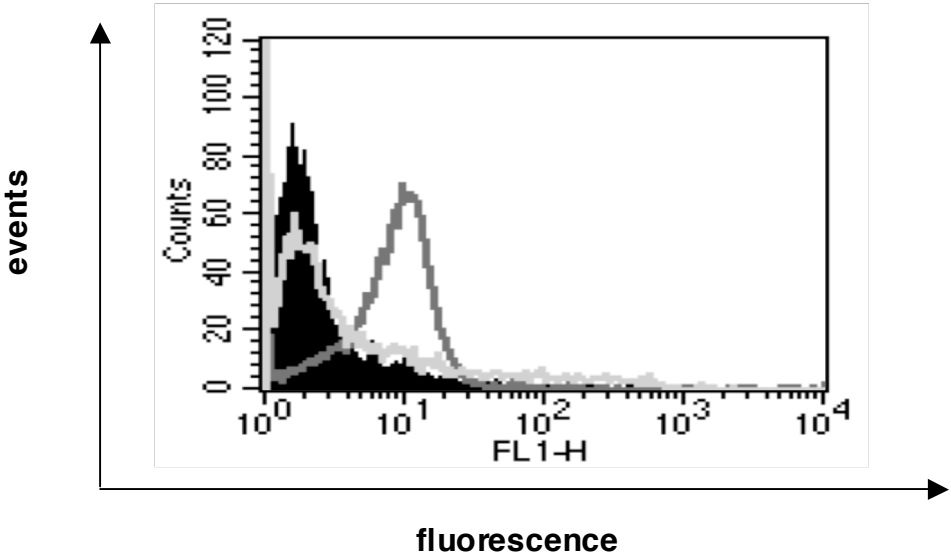


Supplementary Figure 5



Supplementary Figure 5. Ku exports is abolished when actin is disrupted by cytochalasin treatment. Resting monocytes were incubated for 2 h in complete medium with M-CSF in the presence or not of cytochalasin. After 2h, cell surface expression of Ku70 was investigated in control (dark gray line) or cytochalasin-treated cells (light gray line) by flow cytometry. Results obtained with control isotype are indicated (black lines).