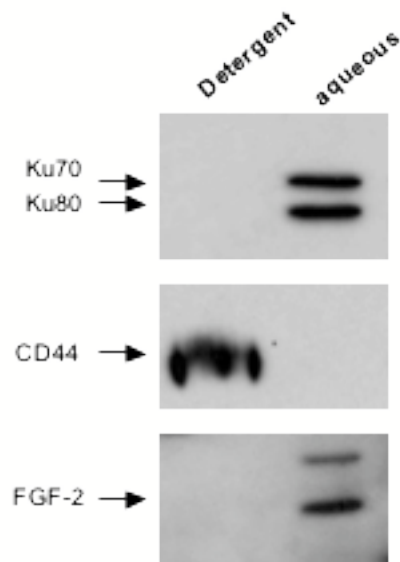
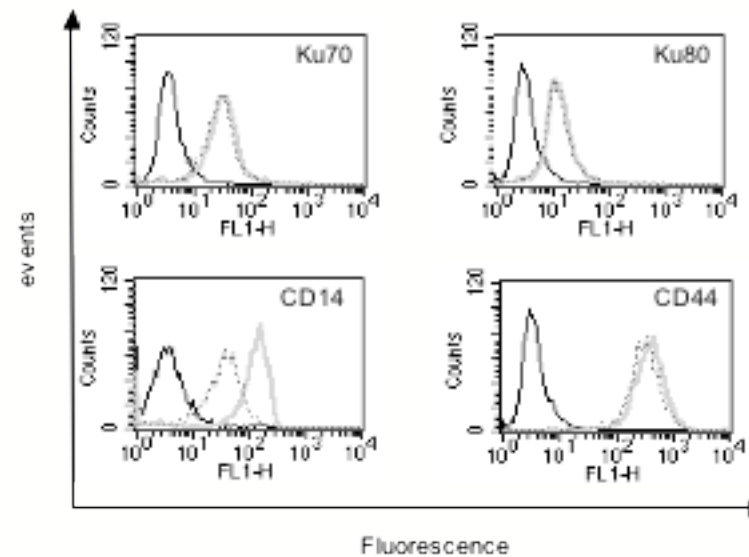


Supplementary Figure 6

A



B



Supplementary figure 6. Ku is a membrane-associated protein. (A) Crude membrane of THP-1 cells were subjected to Triton X-114 fractionation. Detergent and aqueous fractions were obtained after phase transition and analyzed for Ku, CD44 or FGF-2 expression by Western blot ; (B) Activated monocytes were treated (dashed line) or not (gray line) with 1 U / mL of PI-PLC. After treatment, cell surface expression of Ku70, Ku80, CD14 and CD44 was analyzed by flow cytometry. The results obtained for control isotypes are indicated and were identical between treated or not activated monocytes.