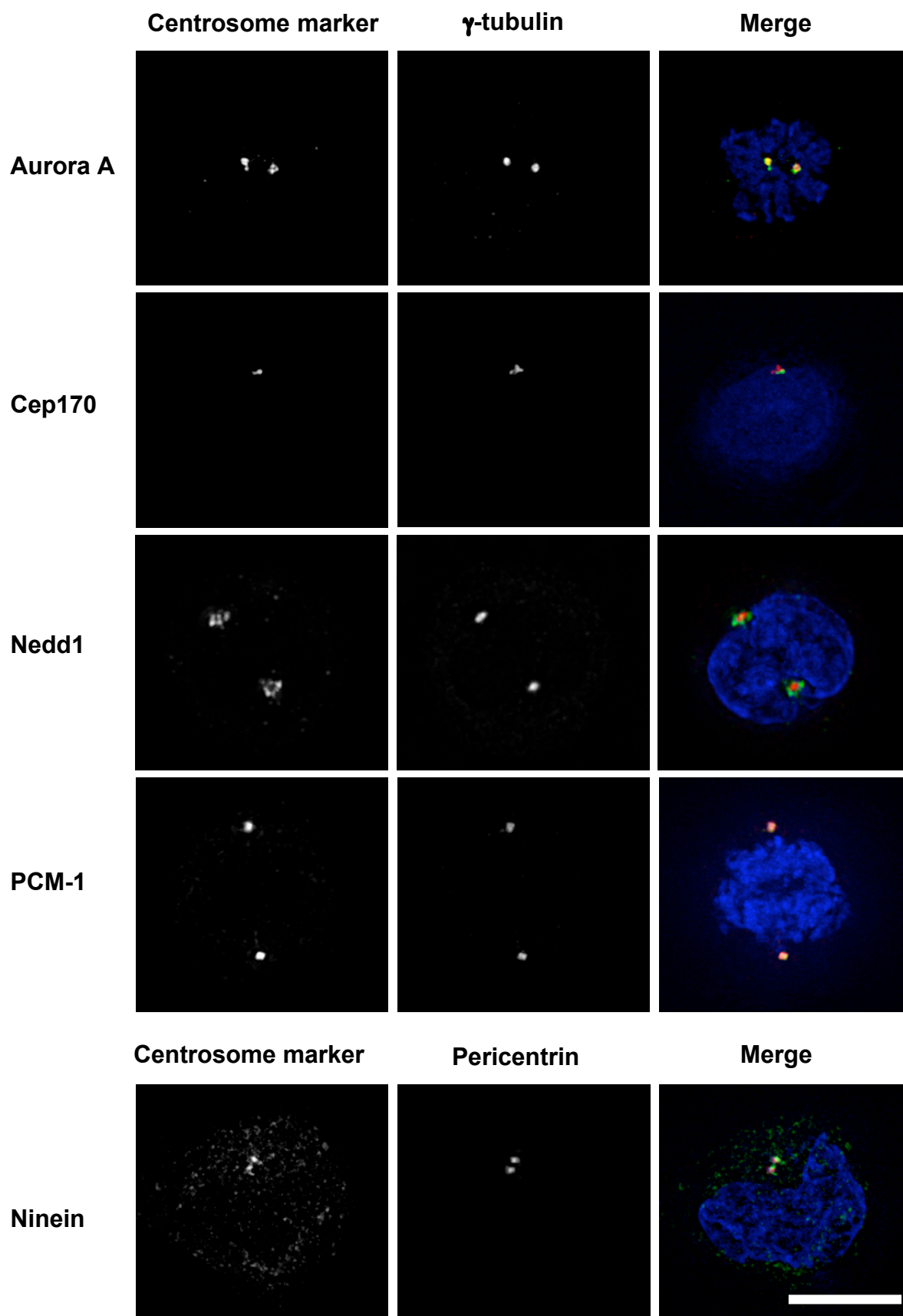


Figure S1



SUPPLEMENTARY FIGURE LEGEND

Figure S1 Control localisation of centrosomal proteins to centrosomes in human lymphoblastoid cells

Cells were stained with antibodies to the indicated centrosomal or pericentrosomal proteins (green) and to γ -tubulin or pericentrin (red), then counter-stained with DAPI (blue). Scale bars are 10 μ m.