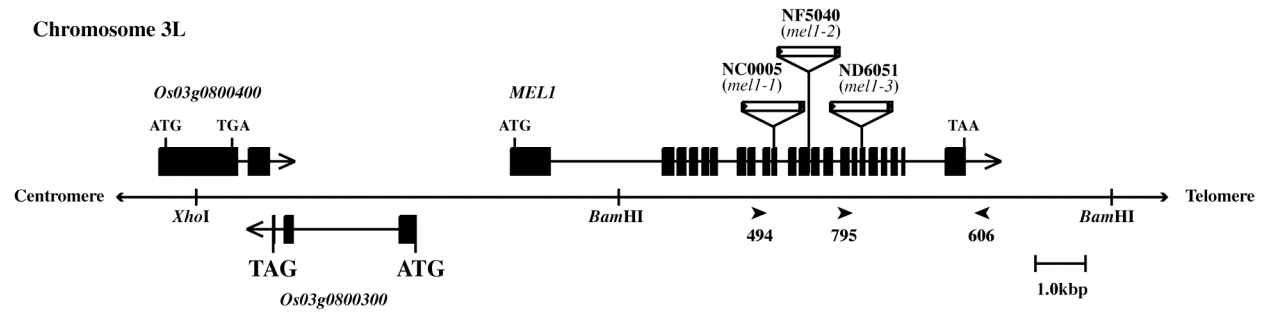
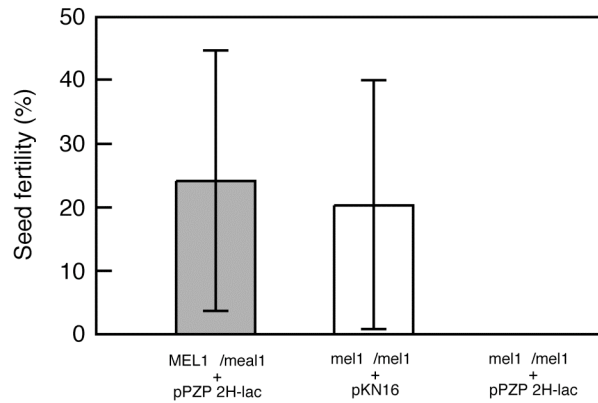


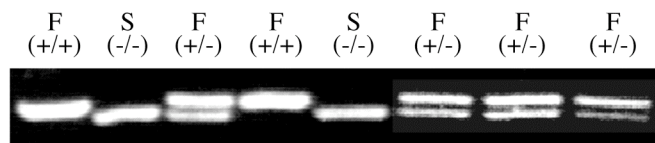
A



B



C



Supplemental Figure 2. Genomic structure of the *MEL1* gene.

(A) Genomic structure around the *MEL1* locus on the long arm end of chromosome 3.

Arrowheads beneath the thin horizontal line, representing the genomic sequence, indicate the primers used in PCR genotyping and/or RT-PCR.

(B) The *MEL1* genomic sequence could recover the sterility caused by the *mel1-1* mutation. (C)

Two allelic PCR products using a mixture of 494, 606 and T17LTR2MR primers can be used to identify the *MEL1* locus genotype.