

Figure S1

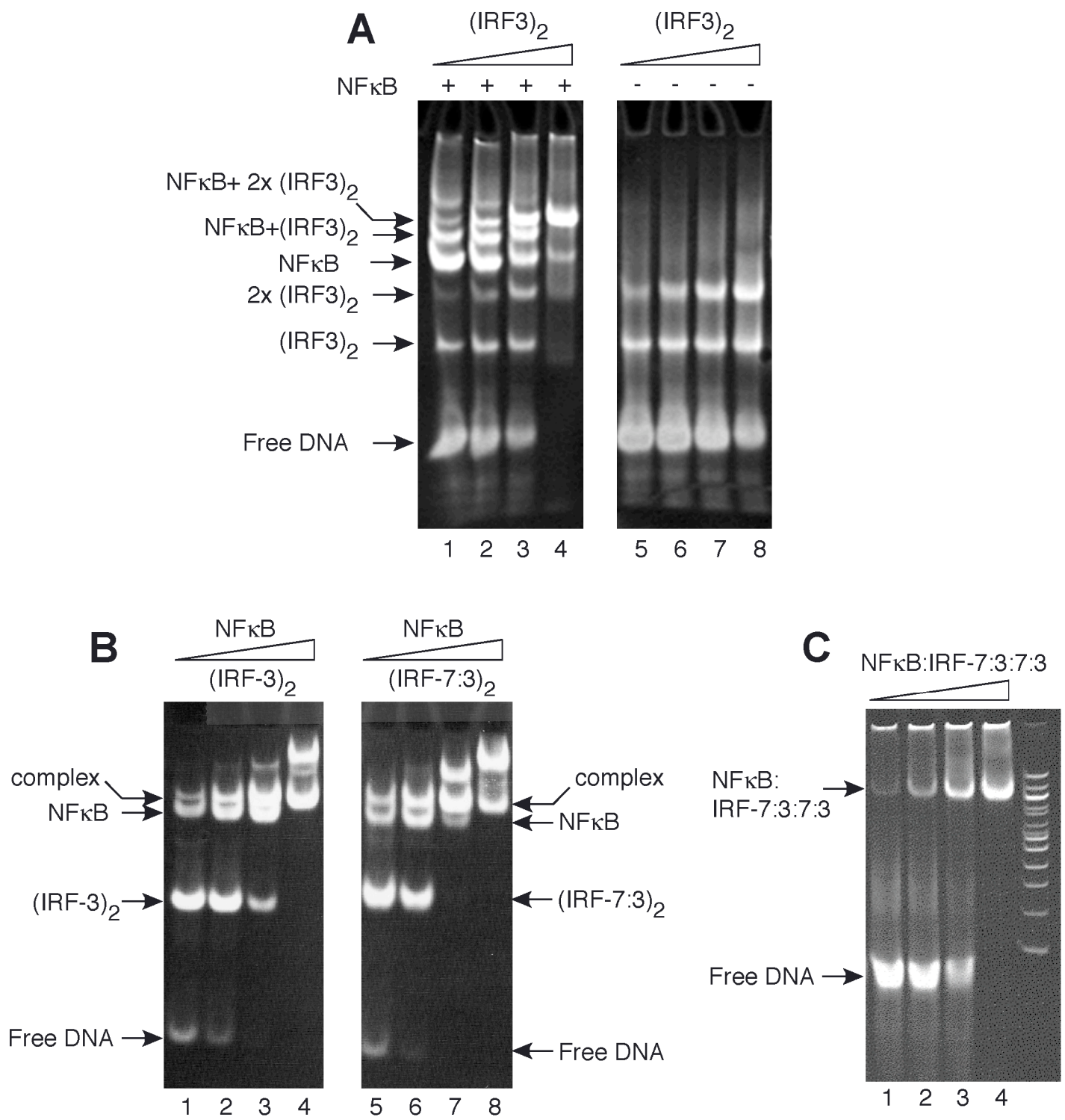


Figure S2

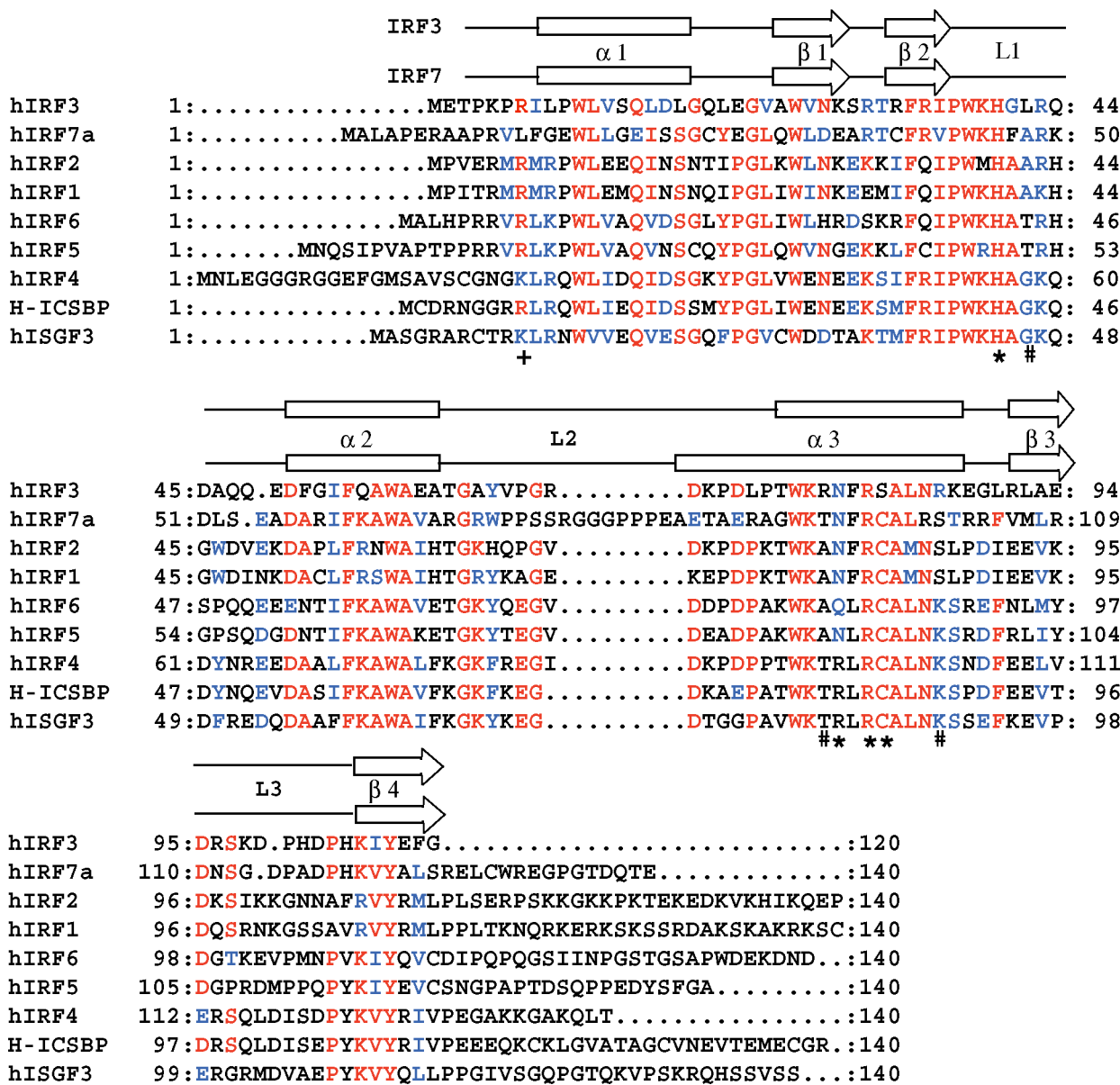


Figure S3

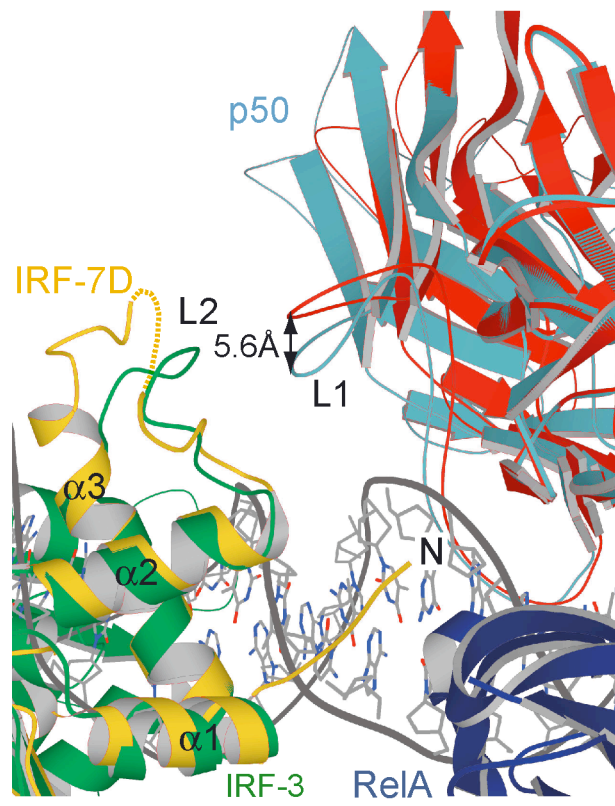


Figure S4

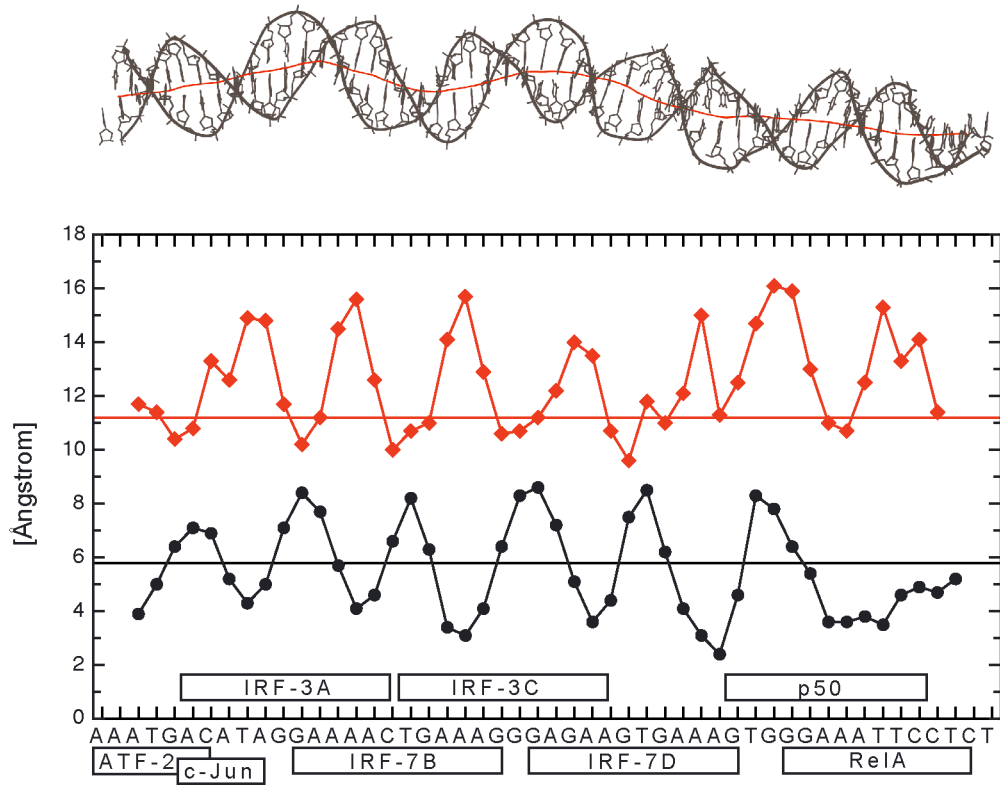


Figure S5

# Alignment of the INF- $\beta$ enhancer

|         | ATF                     | Jun           | IRF-3         | IRF-7            | IRF-3             | IRF-7            | NF $\kappa$ B |  |
|---------|-------------------------|---------------|---------------|------------------|-------------------|------------------|---------------|--|
| Human   | 1:AAATGTAAATGACA        | TAGGAAAA      | CTGAAAGGGAGAA | GTGAAAGT         | GGGAAATTCCTCTGAAT | :60              |               |  |
| Chimp   | 1:AAATGTAAATGACA        | TAGGAAAA      | CTGAAAGGGAGAA | GTGAAAGT         | GGGAAATTCCTCTGAAT | :60              |               |  |
| Mouse   | 1:.....AAATGACAGAGGAAAA | CTGAAAGGGAGAA | GTGAAAGT      | GGGAAATTCCTCTGA  | ..:52             |                  |               |  |
| Rat     | 1:.....AAATGACGGAGGAAAA | CTGAAAGGGAGAA | GTGAAAGT      | GGGAAATTCCTCTGA  | ..:52             |                  |               |  |
| Swine   | 1:.....AAATGACATAGGAAAA | CTGAAAGGGAGAA | GTGAAAGT      | GGGAAATTCCTCTGAA | ..:53             |                  |               |  |
| horse   | 1:.AATGTAAATGACA        | TAGGAAAA      | CA            | GAAAGGGAGAA      | GTGAAAGT          | GGGAAATTCCTCTGAA | ..:58         |  |
| Bovine3 | 1:.....TAAATGACA        | AAGGAAAA      | CTGAAAGGGAGAA | GTGAAAGT         | GGGAAATCTCTCC     | .....:45         |               |  |
| Bovine1 | 1:.....TAAATGACA        | TGGGAAAA      | ATGAAAGC      | GAGAACTGAAAGT    | GGGAAATTCCTCT     | .....:51         |               |  |

Figure S6

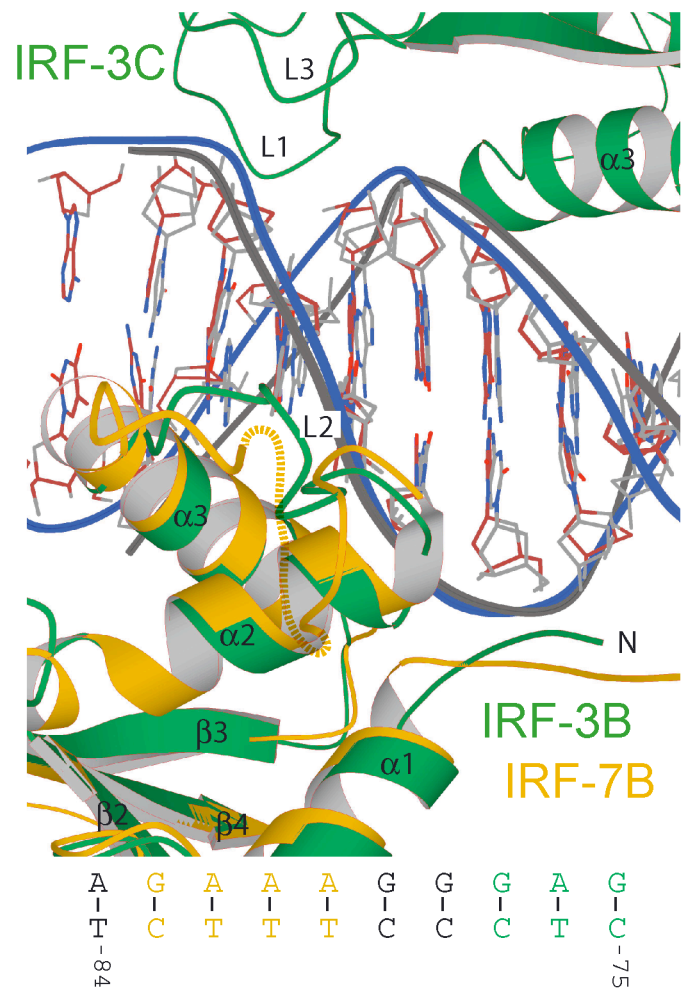
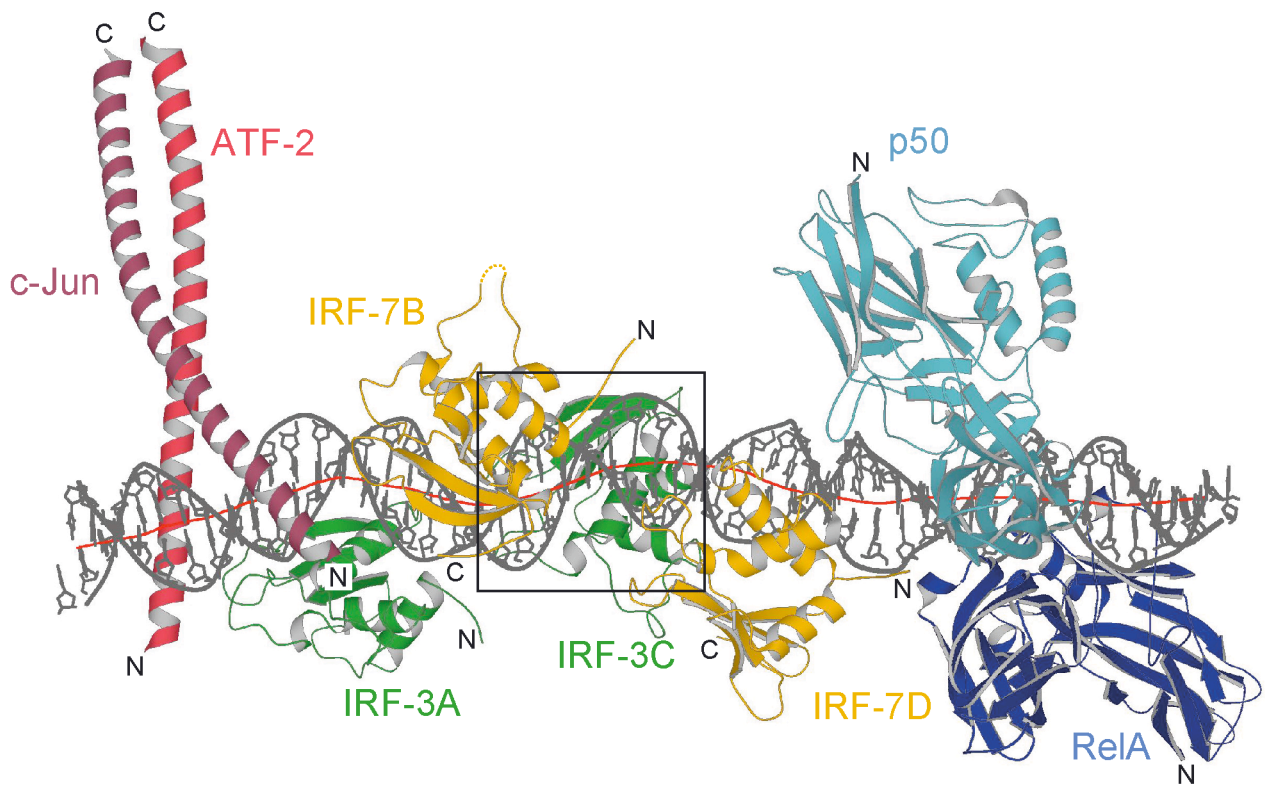


Figure S7