

Strain ^a	Genotype ^b	Source
RSY335*	<i>MATa/MATα</i>	This study
RSY1079*	<i>MATa/MATα T7-UME6</i>	This study
RSY1080*	<i>MATa/MATα T7-UME6^{db1Δ}</i>	This study
RSY1182*	<i>MATa/MATα rim15::KANMX</i>	This study
RSY1100*	<i>MATa/MATα rim11::TRP1</i>	This study
RSY1183*	<i>MATa/MATα rim11::TRP1 rim15::KANMX</i>	This study
RSY809*	<i>MATa/MATα cdc20-1</i>	This study
RSY1101	<i>MATa/MATα cdc20-1 T7-UME6</i>	
RSY1069*	<i>MATα T7-UME6</i>	This study
RSY1070	<i>MATα T7-UME6^{db1Δ}</i>	This study
RSY303	<i>MATa/MATa ade2 ade6 can1-100 his3-11,15 leu2-3,112 trp1-1 ura3-1</i>	This study
RSY1062*	<i>MATa/MATα ume6::LEU2</i>	This study
2072	<i>MAT□ cdc25-5 leu2-3,112 ura3-52</i>	J. Broach
H20c1a5	<i>MATα can1 cdc20-1 gal1 his7 hom3 sap3</i>	V. Guacci
RSY1056	<i>MATa his3Δ200 can1 leu2Δ1 lys2-801 pep4::HIS3 pbr1-Δ1.6R trp1-289 ura3-52 CDC16-TAP</i>	This study
RSY1395	<i>MATa/MATα UME6^{T99N}</i>	This study

Table S1. Yeast strains used in this study. ^aAsterisk denotes strains also harboring *cyh2^r-z ho::LYS2 leu2::hisG lys2 trp1::hisG ura3* alleles. ^bAll alleles listed are homozygous unless indicated otherwise.

Name	sequence
T7	ATTGCGGCTGCCTCGATGGCTAGCATGACTGGTGGACAGCAAATGG GTCTGCTTTCGATGGAA
Dbox1 Δ	CACATTA AAACTTCTGCAGCCACGGCTATGAATAGCAGACAA
Dbox2 Δ	AAATTGGATGGATTGGCTTCAAGAGCTTTGCTCGGTCCGAAT
Dbox3 Δ	TCAAAGGGTGTCTTAGCACCAATTGCTTTACGTATCCATAAT
Dbox4 Δ	TGTTTCAACTGTGAAGCTTTGAAAGCGGACTGTCACTATGAC

Table S2. Oligonucleotides used for sight directed mutagenesis in this study.

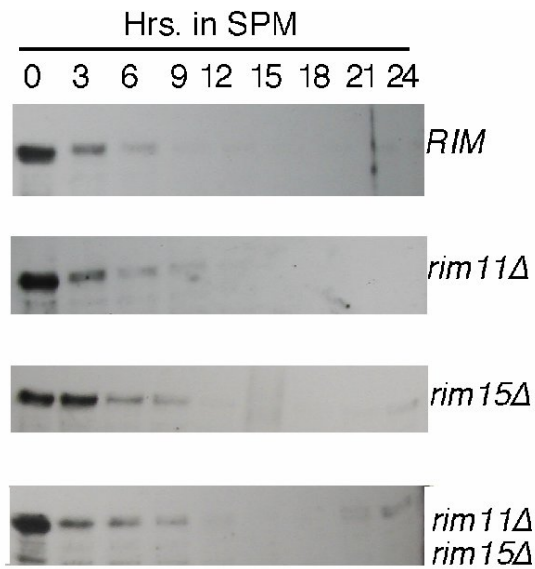


Figure S1. T7-Ume6p levels were monitored in a meiotic timecourse experiment by Western blot analysis in wild type (RSY1079), *rim11Δ* (RSY1100), *rim15Δ* (RSY1182) and *rim11Δ rim15Δ* double mutant (RSY1183) strains as described in Experimental procedures.