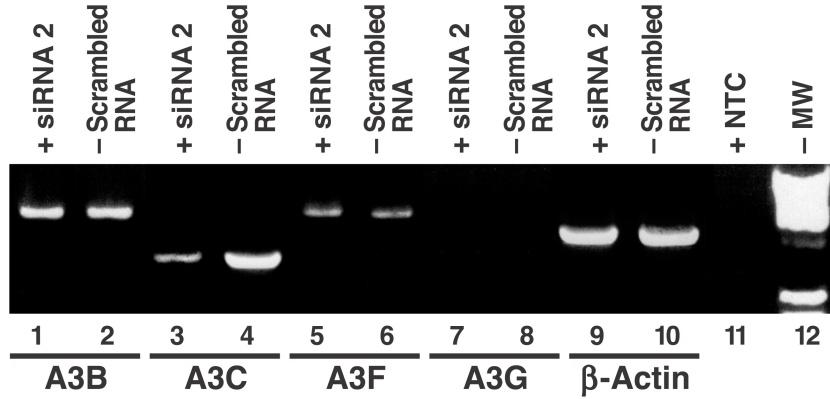


**A****B****210WW Sequences**

1 40  
**Plasmid** TCAGATCACTCTTTGGCAACGACCCCTCGTCACAATAAAG

293T + Scrambled RNA ...  $\frac{G}{A}$  .....  $\frac{G}{A}$  .....  
 293T + siRNA 2 .....

41 80  
**Plasmid** ATAGGGGGGCAACTAAAGGAAGCTCTATTAGACACAGGAG

293T + Scrambled RNA .....  $\frac{GG}{AA}$  .....  $\frac{G}{A}$  .....  $\frac{GG}{AA}$  .....  
 293T + siRNA 2 .....  $\frac{G}{A}$  .....

81 120  
**Plasmid** CAGATGATACAGTATTAGAAGAAATGAATTTGCCAGGAAG

293T + Scrambled RNA ..  $\frac{G}{A}$  ..  $\frac{G}{A}$  .....  $\frac{G}{A}$  ..  $\frac{G}{A}$  .....  $\frac{G}{A}$  ..  $\frac{G}{A}$  .....  
 293T + siRNA 2 .....  $\frac{G}{A}$  ..  $\frac{G}{A}$  ..  $\frac{G}{A}$  .. ..

121 160  
**Plasmid** ATGGAAACCAAAAATGATAGGGGAATTGGAGGTTTATC

293T + Scrambled RNA ..  $\frac{GG}{AA}$  .....  $\frac{GG}{AA}$  ..  $\frac{A}{A}$  .....  
 293T + siRNA 2 ..  $\frac{G}{A}$  .....  $\frac{G}{A}$  .. ..

161 200  
**Plasmid** AAAGTAAGACAGTATGATCAGATACCAATAGAAATCTGCG

293T + Scrambled RNA .....  $\frac{G}{A}$  .....  $\frac{G}{A}$  ..  $\frac{G}{A}$  .....  $\frac{G}{A}$  .....  
 293T + siRNA 2 .....  $\frac{G}{A}$  .. ..

**C**

Base Composition	Plasmid	293T + Scr. RNA	293T + siRNA 2
A	77	100	84
C	32	32	32
G	49	26	42
T	42	42	42