

Fig. 1-2. MS/MS spectra for the standard peptides used to differentiate the N-terminal R- (Figure 1) and VG- (Figure 2) in the peptides. While precursor masses of the two peptides are similar, the arginylated peptide shows prominent peaks for b ions, while the spectrum for the peptide with N-terminal VG is abundant in y ions only.

Figure 1

RVAGVATALAHK

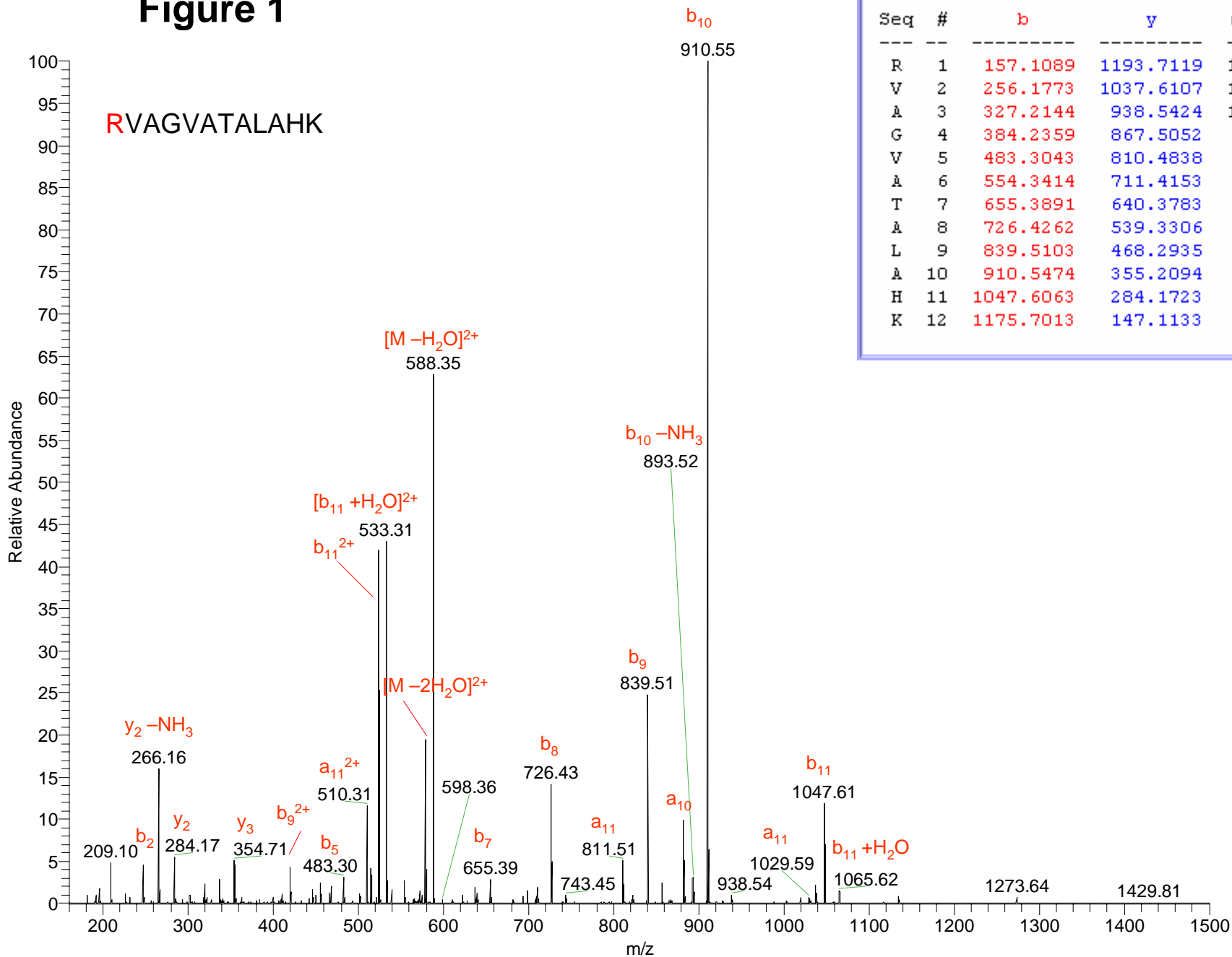


Figure 2

