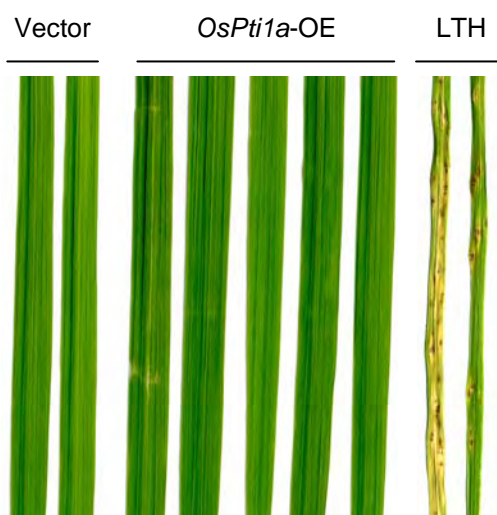


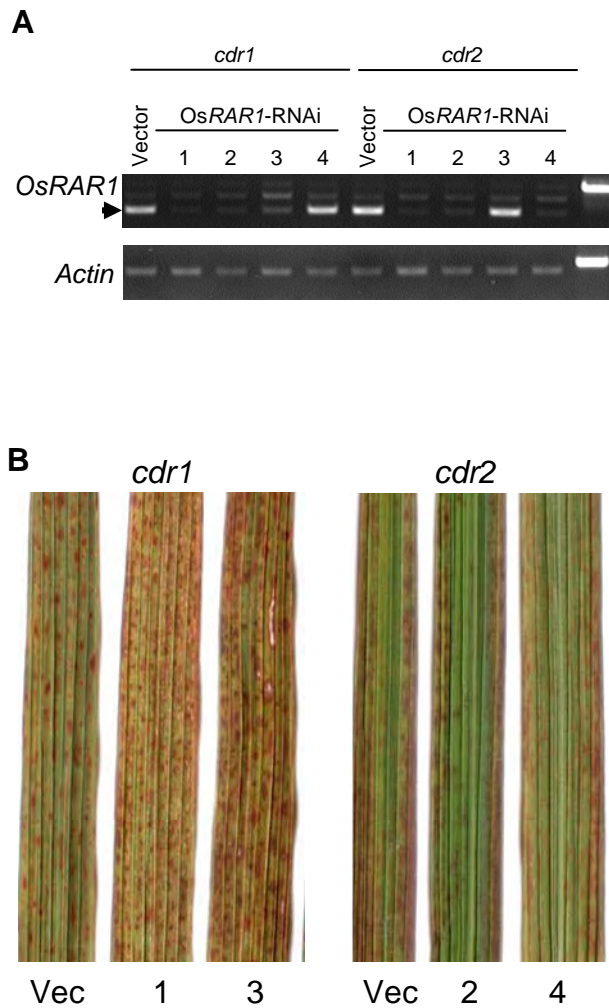
**B**



**Supplemental Figure 1.** Effect of Overexpression of *Os Pti1a* on Disease Resistance.

(A) Three-week-old plants (T1 generation) derived from transgenic NB lines carrying *35S:OsPti1a* (*OsPti1a*-OE) or empty vector (vector) was inoculated with an incompatible race of *M. grisea* (carrying *avr19*). The photograph was taken 10 days post inoculation.

(B) Three-week-old plants (T1 generation) derived from transgenic NB lines carrying *35S:OsPti1a* (*OsPti1a*-OE) or empty vector (vector) and rice cv. LTH were challenged with an incompatible race (*avr19*) of rice blast fungus by spray inoculation. The picture is of leaf blades seven days post inoculation. LTH is susceptible to the fungus (*avr19*) and was used as negative control.



**Supplemental Figure 2.** Suppression of RAR1 expression does not effect lesion formation in *cdr* mutants. **(A)** RT-PCR analysis was performed on total RNA isolated from leaves of T1 progeny of transgenic *cdr* mutants carrying Os *RAR1*-RNAi or empty vector. RT-PCR of an actin gene was used as a control for RNA template amounts. **(B)** Representative phenotypes of three-month-old transgenic *cdr* mutants (T1 generation) carrying the Os *RAR1*-RNAi interference construct or vector.