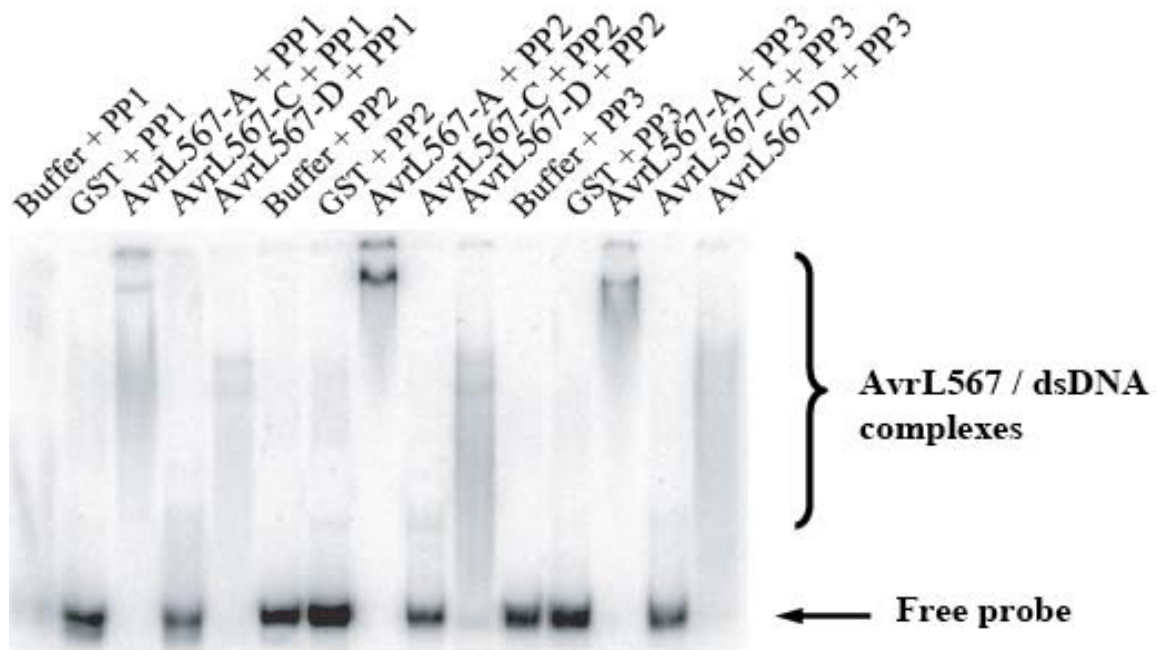


**Supplemental Figure 1.** DNA and RNA binding by AvrL567 proteins.

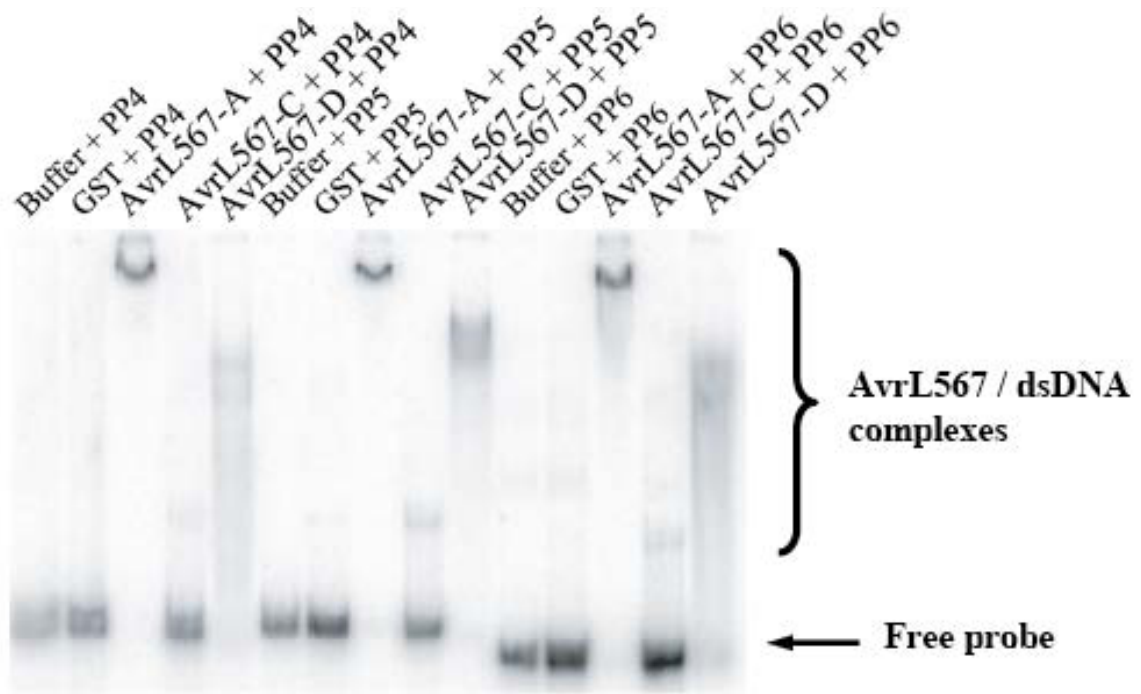
Electrophoretic mobility shift assays (EMSA) of AvrL567-A, AvrL567-C and AvrL567-D were performed with **(A, B)** double-stranded DNA pentaprobates 1-6 (PP1-6), **(C)** single-stranded DNA pentaprobates (PP3b, PP4b and PP6b), and **(D)** double-stranded RNA (rPP4 and rPP6). GST: Glutathione-*S*-transferase from *S. japonicum* (negative control).

See Supplemental Table 1 for the sequences of the pentaprobates.

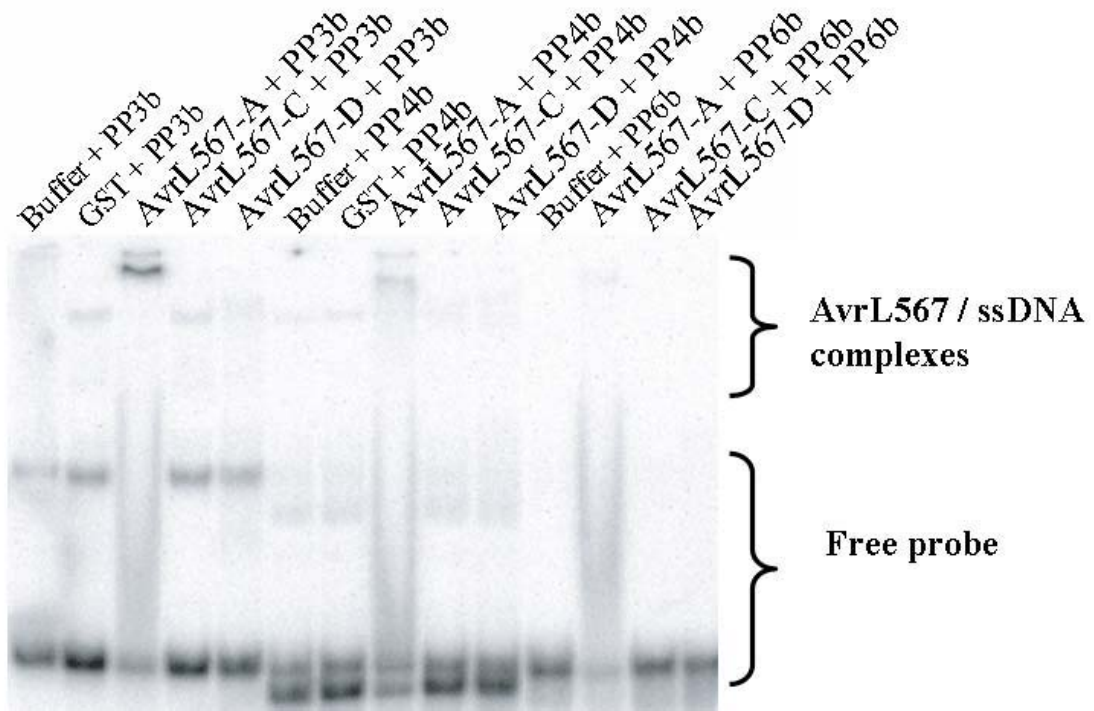
**Supp. Fig. 1A**



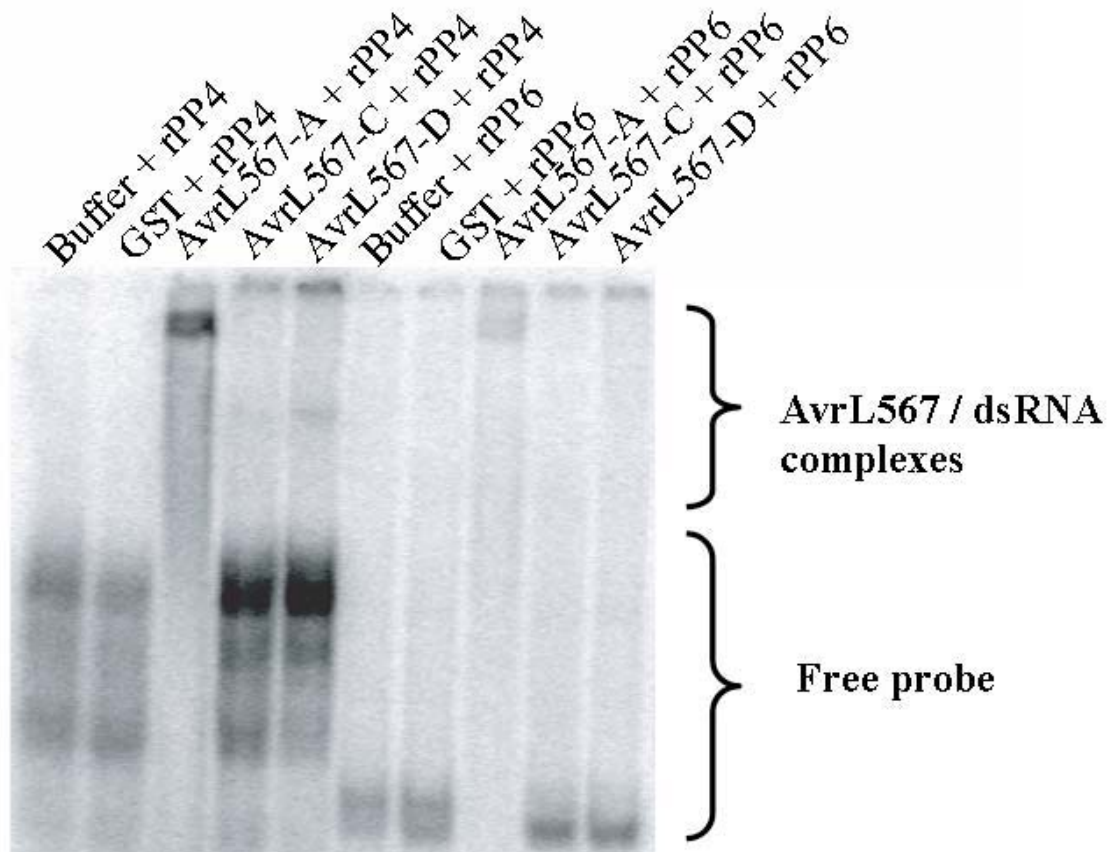
Supp. Fig. 1B



Supp. Fig. 1C



Supp. Fig. 1D



**Supplemental Table 1: Pentaprobe sequences**

<b>Oligonucleotide name</b>	<b>Sequence (5'-3')</b>
Pentaprobe 1 (PP1a) <sup>T</sup>	CGGAATTCTACGAATTTTTCTTTTGTATTTCCTTTTCGCTTT GCTTCTCTCCCTTCGGTTCGTTCGTTTTACCTTGTCTTGC CTTATCTTACTTTA
Pentaprobe 1 (PP1b) <sup>C</sup>	TAAAGTAAGATAAGGCAAGACAAGGTAAAACGGAACAGA ACCGAAGGGAAGAGAAGCAAAGCGAAAGGAAATAAACAA AAGAAAAATTCGTAGAATTCCG
Pentaprobe 2 (PP2a) <sup>T</sup>	TATCTTACTTTAGTTTTCAATTAATTGTGTTGTA CTCTCCTCTG CGTTCACCTAGCTTAACTTGGTTTGGCTTGATTGACTTCAG TTGCGCTCTATTCTA
Pentaprobe 2 (PP2b) <sup>C</sup>	TAGAATAGAGCGCAACTGAAGTCAAATCAAGCCAAACCAA GTTAAGCTAAGTGAACGCAGAGGAGAGTACAACACAATTA AATGAAACTAAAGTAAGATA
Pentaprobe 3 (PP3a) <sup>T</sup>	CGCTCTATTCTACTGTCCTGTGCATTCAATCGTTGAGTTCGA TCTAGTCTCGTCTAACCCCTCCCCTGCTCCGCTGGTCTGGCCT CGCCTATCCTACCCAT
Pentaprobe 3 (PP3b) <sup>C</sup>	ATGGGTAGGATAGGCGAGGCCAGACCAGCGGAGCAGGGG AGGGTTAGACGAGACTAGATCGAACTCAACGATTGAATGC ACAGGACAGTAGAATAGAGCG
Pentaprobe 4 (PP4a) <sup>T</sup>	TATCCTACCCATTGGGCTCATCTGATCCATCCGGTCCCGTCC ACTCGGCTATGTTATGCTGTATTGCAGTCGTGTCGCGTCGA GCTGCCCTAATCCCACC
Pentaprobe 4 (PP4b) <sup>C</sup>	AAAGTAAGATAAGGCAAGACAAGGTAAAACGGAACAGAA CCGAAGGGAAGAGAAGCAAAGCGAAAGGAAATAAACAAA AGAAAAATTCGTAGAATTCCG
Pentaprobe 5 (PP5a) <sup>T</sup>	CCTAATCCCACCTAGCGTATCGGGTCATGTAGTGCTACGTT ACGGCCCCCGCCGGCATCATATTATATCACCCAGTGTA TGTGGTGTGAGGTTGGAG
Pentaprobe 5 (PP5b) <sup>C</sup>	CTCCAACCTCACACCACATTACACTGGGGTGATATAATATG ATGCCGGGCGGGGGCCGTAACGTAGCACTACATGACCCGA TACGCTAGGTGGGATTAGG
Pentaprobe 6 (PP6a) <sup>T</sup>	GTGAGGTTGGAGTCCGACCTGGAATCTCAGCCTGACGTGCC ATGCGGTGCGATGTCACGCCGCGCCACGGTATAGTATGGTA CGGGATCCCG
Pentaprobe 6 (PP6b) <sup>C</sup>	CGGGATCCCGTACCATACTATAACCGTGGCGCGGGCGTGACAT CGCACCGCATGGCACGTCAGGCTGAGATTCCAGGTCCGGAC TCCAACCTCAC

<sup>T</sup> template<sup>C</sup> complementary