

Figure S1. Overexpression of GFP-AtCLASP Induces Stable Microtubule Bundles. Top panels show treatment of low expressing cell with 20 μM oryzalin. Bottom panels show treatment of high expressing cell with 40 μM oryzalin. Times are in minutes. Bar, 5 μm .

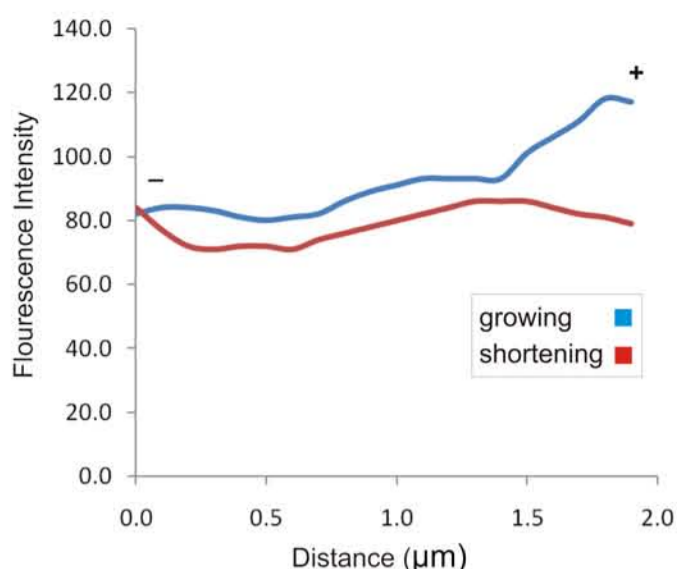


Figure S2. Fluorescence Intensity Plot of GFP-AtCLASP Along Growing and Shrinking Microtubules. Lines were drawn along the last two microns of the plus end. Profiles are shown for two representative microtubules.

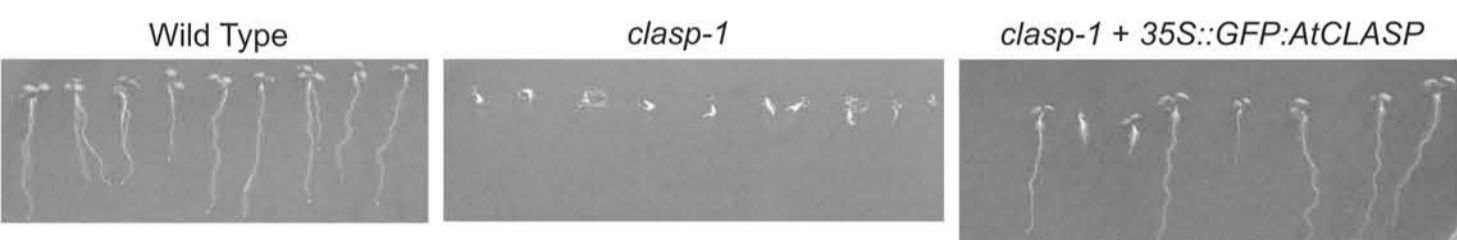


Figure S3. Molecular Complementation of *clasp-1* plants with 35S::GFP:AtCLASP. Plants were grown on agar plates and photographed at six days. The *clasp-1*/GFP:AtCLASP plants are segregating for the transgene.

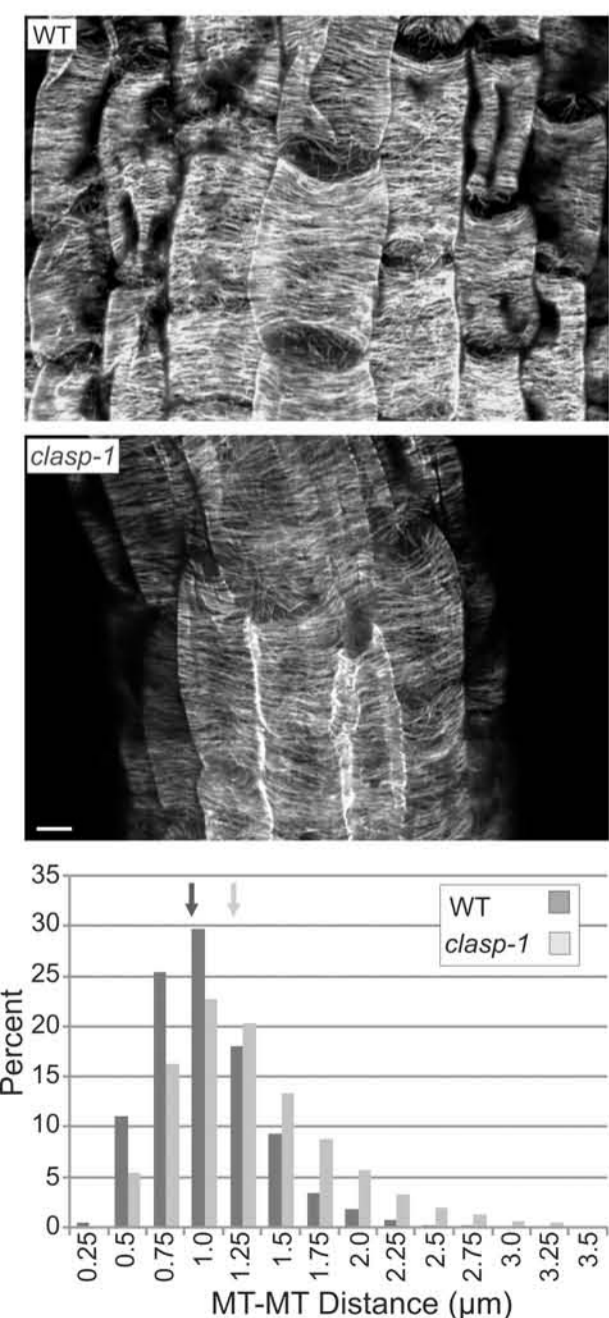


Figure S4. Root Cortical Microtubules are More Sparse in *clasp-1* Compared to Wild Type. Shown are late elongation zones. Arrows indicate means, which are significantly different (T-Test). Bar, 10 μm .

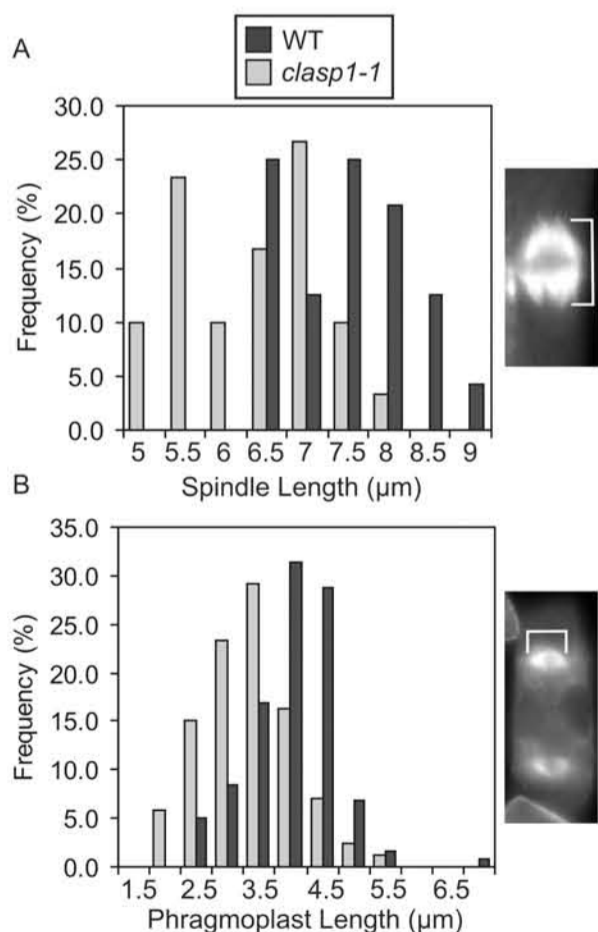


Figure S5. Spindle and Phragmoplast Lengths are Reduced in *clasp-1*. Measurements were taken from anti-tubulin immunofluorescence staining in root squashes of 7-day plants. (A) Histogram of wild-type and *clasp-1* spindle lengths. (B) Histogram of wild type and *clasp-1* phragmoplast lengths. Brackets in images denote length.