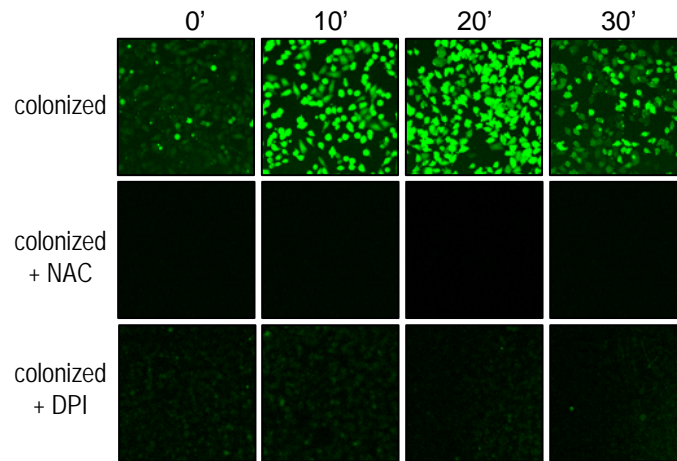
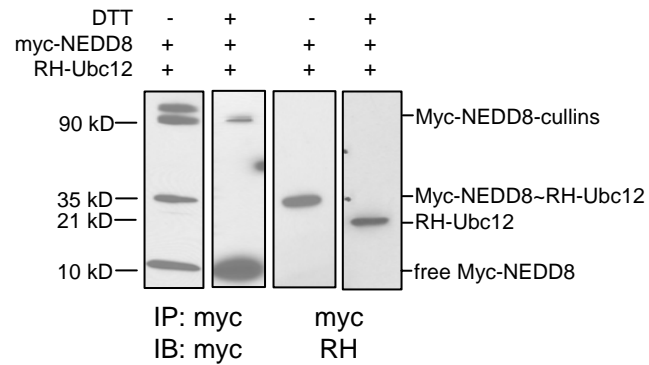


Supplementary Figure S1 Bacteria stimulate rapid epithelial ROS generation as detected by oxidation of DHE. IEC-6 cells were colonized with *Lactobacillus* (MOI=3) washed, and incubated with 5 μ M of DHE. Fluorescence was measured by confocal laser scanning microscopy (Zeiss).



Supplementary Figure S2 DPI and NAC prevent bacterially mediated epithelial ROS generation. HeLa cells pretreated with NAC or DPI for 30 min were colonized with *Lactobacillus* (MOI=3) washed, and incubated with 5 μ M of CM-H₂DCF-DA. Fluorescence was measured by confocal laser scanning microscopy (Zeiss).



Supplementary Figure S3 Confirmation of the NEDD8~Ubc12 thioester intermediate. Immunoprecipitation of myc-NEDD8 with anti-myc agarose and immunoblots with myc- and RH-specific antisera under non-reducing and reducing conditions of lysates from HeLa cells co-transfected with Myc-NEDD8 and RH-Ubc12.