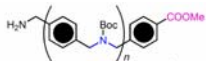
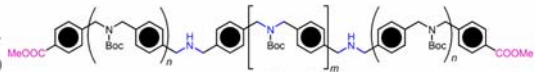


PCC / CH₂Cl₂



i) PhMe / Dean - Stark
ii) NaBH₄ / THF / MeOH

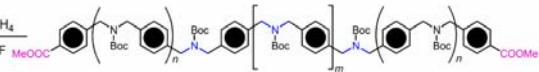
***N* = *N* + 2 when using 8a; *N* = *N* + 4 when using 8b**



Boc₂O / TEA / CHCl₃

LiAlH₄

THF



14(*m*, *n*)

13(*m*, *n*)