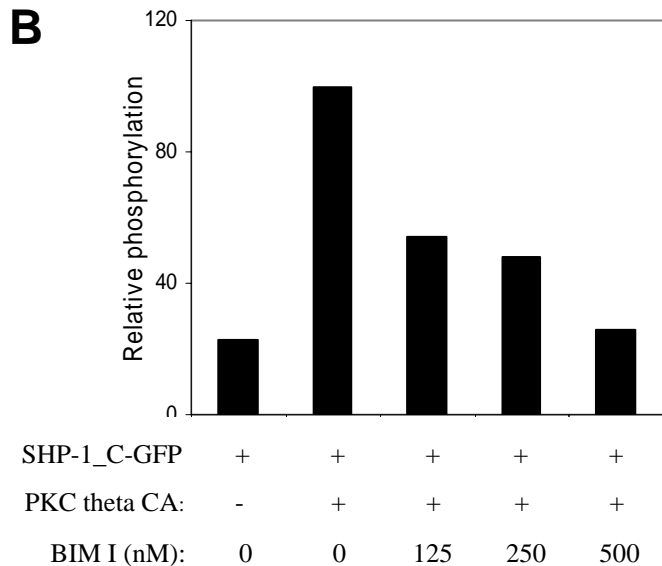
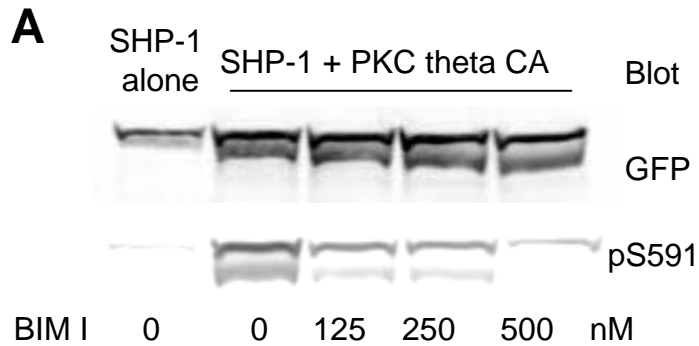


Supplementary Figure 1.



Suppl Fig 1: BIM I inhibition of PKC theta phosphorylation of SHP-1 S591.

SHP-1_C-GFP was transfected into HEK293T cells, either alone or with PKC theta CA. BIM I at the indicated concentrations was added during the last two hours of transfection.

(A) cell lysate was blotted with either anti-GFP to determine the amount of SHP-1_C-GFP, or with anti-pS591 to determine the amount of pS591 on SHP-1_C-GFP.

Detection was quantitated on the LiCor Odyssey Infrared Imaging System to assure linearity.

(B) Relative phosphorylation of S591 was plotted in a bar graph based on quantification of (A), in which PKC theta CA phosphorylation of S591 in the absence of BIM I was taken as 100%, and the other conditions are expressed as a percentage of that.