

Isolation, Sequencing, and Mutagenesis of the Gene Encoding Cytochrome c_{553i} of *Paracoccus denitrificans* and Characterization of the Mutant Strain

JOYCE RAS,* WILLEM N. M. REIJNDERS, ROB J. M. VAN SPANNING, NELLIE HARMS, L. FRED OLTMANN, AND ADRIAN H. STOUTHAMER

Department of Microbiology, Biological Laboratory, Vrije Universiteit, De Boelelaan 1087, 1081 HV Amsterdam, The Netherlands

Received 8 July 1991/Accepted 29 August 1991

The periplasmically located cytochrome c_{553i} of *Paracoccus denitrificans* was purified from cells grown aerobically on choline as the carbon source. The purified protein was digested with trypsin to obtain several protein fragments. The N-terminal regions of these fragments were sequenced. On the basis of one of these sequences, a mix of 17-mer oligonucleotides was synthesized. By using this mix as a probe, the structural gene encoding cytochrome c_{553i} (*cycB*) was isolated. The nucleotide sequence of this gene was determined from a genomic bank. The N-terminal region of the deduced amino acid sequence showed characteristics of a signal sequence. Based on the deduced amino acid sequence of the mature protein, the calculated molecular weight is 22,427. The gene encoding cytochrome c_{553i} was mutated by insertion of a kanamycin resistance gene. As a consequence of the mutation, cytochrome c_{553i} was absent from the periplasmic protein fraction. The mutation in *cycB* resulted in a decreased maximum specific growth rate on methanol, while the molecular growth yield was not affected. Growth on methylamine or succinate was not affected at all. Upstream of *cycB* the 3' part of an open reading frame (ORF1) was identified. The deduced amino acid sequence of this part of ORF1 showed homology with methanol dehydrogenases from *P. denitrificans* and *Methylobacterium extorquens* AM1. In addition, it showed homology with other quinoproteins like alcohol dehydrogenase from *Acetobacter aceti* and glucose dehydrogenase from both *Acinetobacter calcoaceticus* and *Escherichia coli*. Immediately downstream from *cycB*, the 5' part of another open reading frame (ORF2) was found. The deduced amino acid sequence of this part of ORF2 showed homology with the *moxJ* gene products from *P. denitrificans* and *M. extorquens* AM1.

Paracoccus denitrificans is a gram-negative, aerobic soil bacterium that is able to grow under a large variety of growth conditions. Depending on these conditions, different oxidases, reductases, electron carriers, and dehydrogenases can be synthesized. During aerobic growth, aa_3 - and o -type oxidases are formed (45). In anaerobically grown cells, several inducible oxidoreductases are formed which enable the bacterium to use nitrate, nitrite, nitric oxide, or nitrous oxide as the terminal electron acceptor (13, 20, 47). *P. denitrificans* is able to synthesize up to at least 10 different c -type cytochromes (7-9). Some of them can be detected in the periplasm and the others in the cytoplasmic membrane. The cytochromes can be distinguished by their absorption maximum, redox midpoint potential, and molecular mass. *P. denitrificans* can grow methylotrophically on methylamine or methanol as the sole carbon and energy source. In the first step, these compounds are oxidized to formaldehyde by methylamine or methanol dehydrogenase (3, 5). During growth on methylamine or methanol, four periplasmically located cytochromes c are synthesized. Two cytochromes with estimated molecular masses of 22 kDa (c_{551i}) and 30 kDa (c_{553i}) are induced specifically during methylotrophic growth. The 15-kDa cytochrome c_{550} is constitutively present, and the 45-kDa cytochrome c is a peroxidase (21).

Both methylamine dehydrogenase and methanol dehydrogenase are located in the periplasm and consist of two identical small and two identical large subunits (22, 23, 25). Methylamine dehydrogenase contains a pyrroloquinone

linequinone (PQQ)-like cofactor that is covalently linked to the enzyme. During growth on methylamine, an additional electron carrier, the blue copper protein amicyanin is induced. Amicyanin mediates the flow of electrons from methylamine dehydrogenase to c -type cytochromes (24, 44).

Methanol dehydrogenase is a quinoprotein that contains a noncovalently bound PQQ (4, 18). Genes encoding the subunits of methanol dehydrogenase of *P. denitrificans* have been isolated (22, 42). *moxF*, encoding the large subunit, and *moxI*, encoding the small subunit, are located closely linked together with two additional genes, *moxJ* and *moxG*, in the gene order *moxF-moxJ-moxG-moxI*. The gene product of *moxJ* is suggested to be a chaparoninlike protein. The *moxG* gene encodes a 17.7-kDa c -type cytochrome. Recently, Long and Anthony (31) demonstrated by in vitro experiments with purified periplasmic cytochromes c and methanol dehydrogenase that cytochrome c_{551i} is the electron acceptor for methanol dehydrogenase. Van Spanning et al. (42) reached the same conclusion from growth experiments using a mutant lacking cytochrome c_{551i} , which showed unimpaired growth on methylamine and no growth on methanol. In a previous in vitro study by others, it was suggested that cytochrome c_{553i} was the electron acceptor for methanol dehydrogenase (14), but above-mentioned results disprove this suggestion. Consequently, the function of this c -type cytochrome in the electron transport chain of *P. denitrificans* is not clear at the moment.

This report describes the purification of the periplasmically located cytochrome c_{553i} , isolation and mutagenesis of the gene encoding this cytochrome, and the characterization

* Corresponding author.

TABLE 1. Bacterial strains and plasmids used in this study

Strain or plasmid	Relevant characteristics ^a	Source or reference
Bacteria		
<i>Paracoccus denitrificans</i>		
Pd 1235	Rif ^r , enhanced conjugation frequencies, m ⁻	17
Pd 6121	Pd 1235 <i>cycB</i> ::Km ^r	This study
<i>Escherichia coli</i>		
S17-1	Sm ^r <i>pro</i> r ⁻ m ⁺ RP4-2 integrated (Tc::Mu) (Km::Tn7)	39
JM101	<i>supE thi</i> Δ(<i>lac-proAB</i>) F' (<i>traD36 proAB lacI^a lacZΔM15</i>)	34
TG1	<i>supE hsdΔ5 thi</i> Δ(<i>lac-proAB</i>) F' (<i>traD36 proAB lacI^a lacZΔM15</i>)	37
Plasmids		
pUC4K	Km ^r (Tn903)	46
pWR20	<i>cycB</i> , pUC13 derivative	This study
pWR30	<i>cycB</i> ::Km ^r , pWR20 derivative	This study
pGRPd1	<i>oriV</i> (ColE1) Amp ^r <i>oriT</i> Sm ^r (Tn1831)	35
pRTd6121	<i>oriV</i> (ColE1) Amp ^r <i>oriT</i> Sm ^r <i>cycB</i> ::Km ^r	This study

^a Rif, rifampin; Sm, streptomycin; Km, kanamycin; Amp, ampicillin.

of the mutant strain. The possible physiological function of cytochrome *c*_{553i} in the respiratory chain is discussed.

MATERIALS AND METHODS

Bacterial strains, plasmids, and growth conditions. The bacterial strains and plasmids are described in Table 1. *P. denitrificans* and *Escherichia coli* were routinely grown on brain heart infusion broth (GIBCO, Life Technologies LTD, Paisley, United Kingdom). Antibiotics, when added, were used at final concentrations of 40 μg of rifampin per ml, 25 μg of kanamycin per ml, 25 μg of streptomycin per ml, and 100 μg of ampicillin per ml.

For large-scale purification of cytochrome *c*_{553i}, wild-type *P. denitrificans*, Pd 1235, was grown in an aerobic, choline-limited chemostat culture at 30°C and a controlled pH of 7, at a dilution rate of 0.15. Choline chloride (30 mM) was used as the carbon source in a mineral salts medium described by Chang and Morris (10) supplemented with a trace element solution described by Lawford et al. (30) and 0.02% yeast extract. To investigate the growth characteristics of the parent and the mutant strains, we used the same medium as described above to perform both batch and continuous cultures. In batch cultures, 50 mM methylamine, 25 mM glucose, or 25 mM succinate, and in chemostat cultures, 100 mM methylamine or 100 mM methanol, was used as the carbon source. Continuous cultures on methanol were started on methylamine as the sole carbon source, a growth condition during which methanol dehydrogenase is also induced in *P. denitrificans* (16). When a steady state was obtained, the culture was switched to methanol as the sole carbon source. During anaerobic growth, the medium described above was supplemented with 40 mM potassium

nitrate. The cultures were incubated in 30-ml flasks completely filled with medium.

Isolation of periplasmic and membrane-bound proteins. Cells were harvested and suspended to an optical density of 200 cm⁻¹ at 660 nm. Cells were broken by an osmotic shock after treatment with lysozyme as described by Witholt et al. (50). The resulting spheroplasts were removed by centrifugation for 30 min at 40,000 × *g* and 4°C. The supernatant fraction, containing the periplasmic proteins, was saturated with ammonium sulfate (0.6 g/ml), stirred for 1 h on ice, and centrifuged for 1 h at 100,000 × *g*. For further purification of cytochrome *c*_{553i}, the precipitate was dissolved in a minimal volume of 100 mM Tris hydrochloride (pH 8.0) containing 1.5 M ammonium sulfate. For gel electrophoresis of the periplasmic proteins, the protein precipitate was dissolved in a minimal volume of 100 mM Tris hydrochloride (pH 8.0). The resulting solution was dialyzed overnight at 4°C against 100 mM Tris hydrochloride (pH 8.0), using a dialyzing tube with a cutoff of 3,500. Periplasmic proteins were stored at -70°C.

Membrane-bound proteins were isolated from membrane vesicles, which were prepared by an osmotic shock of the spheroplasts (27). A centrifugation step of 10 min at 20,000 × *g* and 4°C was used to remove cell debris. Vesicles were collected by centrifugation for 45 min at 50,000 × *g* and 4°C. To solubilize the membrane proteins, the vesicles were suspended in 1% dodecyl-β-D-maltoside in 50 mM Tris hydrochloride (pH 7.5) and incubated for 1 h on ice, according to Berry and Trumpower (6). The membrane particles were removed by centrifugation for 1 h at 100,000 × *g* and 4°C. The extract containing the membrane proteins was stored at -70°C.

Purification of periplasmically located cytochrome *c*_{553i}. The concentrated periplasmic protein fraction was applied to a hydrophobic interaction high-pressure liquid chromatography (HPLC) column (TSK-Phenyl-5-PW [7.5 by 75 mm]; Bio-Rad Laboratories, Richmond, Calif.) equilibrated with 100 mM Tris hydrochloride (pH 8.0) containing 1.5 M ammonium sulfate. The proteins were eluted with a linear gradient of 1.5 to 0 M ammonium sulfate in 100 mM Tris hydrochloride (pH 8.0). The flow rate was 0.8 ml/min. Proteins and heme were monitored by the A₂₈₀ and A₄₁₇, respectively. Cytochrome *c*_{553i}-containing fractions were concentrated by ammonium sulfate precipitation (0.6 g/ml). The proteins were collected by centrifuging for 1 h at 100,000 × *g* and 4°C and then dialyzing overnight at 4°C against 100 mM Tris hydrochloride (pH 8.0). Cytochrome *c*_{553i} was further purified by elution with an anion-exchange HPLC column (TSK-DEAE-5-PW [7.5 by 75 mm]; Pharmacia LKB, Uppsala, Sweden) equilibrated with 20 mM Tris hydrochloride (pH 8.0). The proteins were eluted with a linear gradient of 20 to 500 mM Tris hydrochloride (pH 8.0) and a flow rate of 0.8 ml/min. Proteins were monitored by the A₂₈₀, and heme was monitored by the A₄₁₇. Cytochrome *c*_{553i} was identified by gel electrophoresis in the presence of sodium dodecyl sulfate (SDS) and subsequent heme staining. The fractions containing cytochrome *c*_{553i} were collected and loaded on a preparative SDS gel. After gel electrophoresis, a reddish heme-containing band was obtained and cut out from the gel. To remove the polyacrylamide, electroelution was performed using a dialyzing membrane with a cutoff of 3,500. Proteins were eluted for 45 min at 20 mA with an elution buffer containing 8.0 mM Tris hydrochloride (pH 7.8), 1.1 mM citric acid, and 2.5 mM EDTA.

N-terminal amino acid sequence determination. Trypsin (treated with L-1-tosylamide-2-phenylethyl chloromethyl ke-

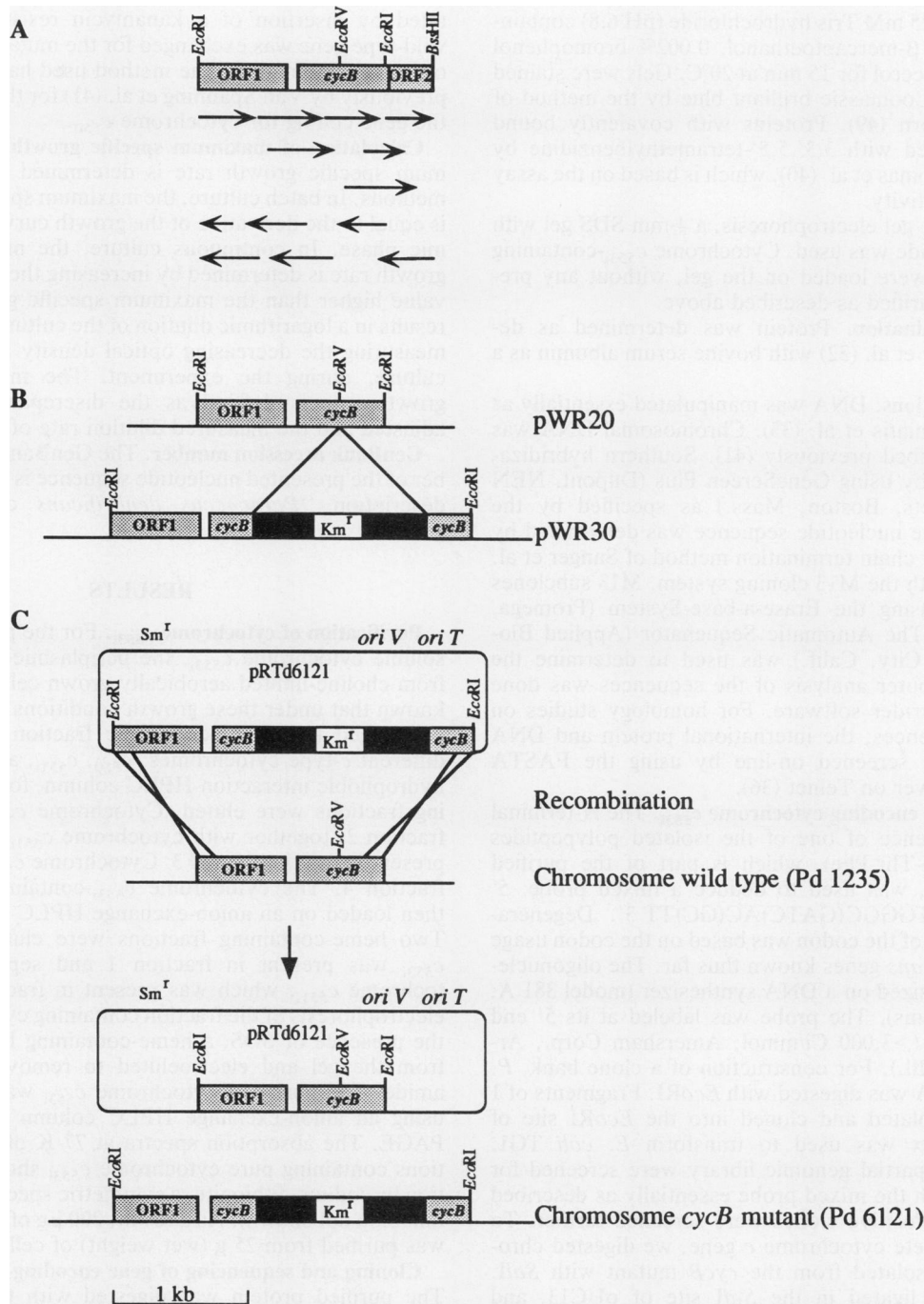


FIG. 1. Restriction map and cloning strategy for a *P. denitrificans* DNA fragment containing the gene encoding cytochrome *c*_{553i} (*cycB*) and part of the open reading frames ORF1 and ORF2 at both sides of the *cycB* gene (A). Scheme of the inactivation of the structural gene encoding cytochrome *c*_{553i} (*cycB*) by insertion of a kanamycin resistance gene (*Km*^r) (B), and the exchange of the wild-type gene with the mutated gene by homologous recombination (C). *Sm*^r, streptomycin resistance.

tone; Sigma Chemical Co., St. Louis, Mo.) was used to digest the purified protein into several polypeptides. The peptides were separated with a reversed-phase HPLC column (RP318 [4.6 by 250 mm]; Bio-Rad Laboratories) preequilibrated with 0.1% trifluoroacetic acid. Peptides were eluted with 75% acetonitrile in 0.08% trifluoroacetic acid (pH 2.0) with a flow rate of 1 ml/min. The effluent was monitored for peptides at *A*₂₂₀. The N-terminal regions of the purified

polypeptides were sequenced by Edman degradation with a gas-phase amino acid sequencer (19) at the Laboratory for Medical Biochemistry, Sylvius Laboratories, Leiden, The Netherlands.

Gel electrophoresis, and protein and heme staining. SDS-polyacrylamide gel electrophoresis (PAGE) was performed on 1.5-mm-thick slab gels with 11 to 13% polyacrylamide prepared by the method of Laemmli (29). Samples were

incubated in 0.0625 mM Tris hydrochloride (pH 6.8) containing 2% SDS, 5% β -mercaptoethanol, 0.002% bromophenol blue, and 10% glycerol for 15 min at 20°C. Gels were stained for protein with Coomassie brilliant blue by the method of Weber and Osborn (49). Proteins with covalently bound heme were stained with 3,3',5,5'-tetramethylbenzidine by the method of Thomas et al. (40), which is based on the assay for peroxidase activity.

For preparative gel electrophoresis, a 4-mm SDS gel with 11% polyacrylamide was used. Cytochrome c_{553i} -containing HPLC fractions were loaded on the gel, without any pretreatment, and purified as described above.

Protein determination. Protein was determined as described by Lowry et al. (32) with bovine serum albumin as a standard.

DNA manipulations. DNA was manipulated essentially as described by Maniatis et al. (33). Chromosomal DNA was isolated as described previously (41). Southern hybridizations were done by using GeneScreen Plus (Dupont, NEN Research Products, Boston, Mass.) as specified by the manufacturer. The nucleotide sequence was determined by using the dideoxy chain termination method of Sanger et al. (38) combined with the M13 cloning system. M13 subclones were made by using the Erase-a-base-System (Promega, Madison, Wis.). The Automatic Sequenator (Applied Biosystems, Foster City, Calif.) was used to determine the sequences. Computer analysis of the sequences was done with the DNA-Strider software. For homology studies on amino acid sequences, the international protein and DNA data banks were screened on-line by using the FASTA program mail server on Telnet (36).

Cloning of gene encoding cytochrome c_{553i} . The N-terminal amino acid sequence of one of the isolated polypeptides (Val-Asp-Trp-Ala-Thr-Phe), which is part of the purified cytochrome c_{553i} , was used to deduce a mixed probe: 5' GT(GC)GA(CT)TGGGC(GATC)AC(GC)TT 3'. Degeneration on position 3 of the codon was based on the codon usage of all *P. denitrificans* genes known thus far. The oligonucleotide was synthesized on a DNA synthesizer (model 381 A; Applied Biosystems). The probe was labeled at its 5' end with [γ - 32 P]ATP (>3,000 Ci/mmol; Amersham Corp., Arlington Heights, Ill.). For construction of a clone bank, *P. denitrificans* DNA was digested with *EcoRI*. Fragments of 1 to 3 kb were isolated and cloned into the *EcoRI* site of pUC13. This mix was used to transform *E. coli* TG1. Colonies of this partial genomic library were screened for hybridization with the mixed probe essentially as described previously (41). Positive clones were screened further. To isolate the complete cytochrome *c* gene, we digested chromosomal DNA isolated from the *cycB* mutant with *Sall*. Fragments were ligated in the *Sall* site of pUC13, and colonies were selected that were resistant to kanamycin, the resistance being encoded by the marker present in the mutated gene. Positive clones were further analyzed.

Site-directed mutagenesis of the gene encoding cytochrome c_{553i} . The gene encoding cytochrome c_{553i} (*cycB*) was mu-

tated by insertion of a kanamycin resistance gene. The wild-type gene was exchanged for the mutant one by homologous recombination. The method used has been described previously by Van Spanning et al. (41) for the mutagenesis of the gene coding for cytochrome c_{550} .

Calculation of maximum specific growth rate. The maximum specific growth rate is determined by two different methods. In batch culture, the maximum specific growth rate is equal to the derivative of the growth curve in the logarithmic phase. In continuous culture, the maximum specific growth rate is determined by increasing the dilution rate to a value higher than the maximum specific growth rate. This results in a logarithmic dilution of the culture, determined by measuring the decreasing optical density at 660 nm of the culture, during the experiment. The maximum specific growth rate is defined as the discrepancy between the adjusted and the measured dilution rate of the culture.

GenBank accession number. The GenBank accession number of the presented nucleotide sequence is M75583, with the description "*Paracoccus denitrificans* cytochrome c_{553i} gene."

RESULTS

Purification of cytochrome c_{553i} . For the purification of the soluble cytochrome c_{553i} , the periplasmic fraction isolated from choline-limited aerobically grown cells was used. It is known that under these growth conditions cytochrome c_{553i} is induced (7). The periplasmic fraction contained three different *c*-type cytochromes; c_{550} , c_{551i} , and c_{553i} . Using a hydrophobic interaction HPLC column, four heme-containing fractions were eluted. Cytochrome c_{553i} was found in fraction 2, together with cytochrome c_{551i} , which was also present in fractions 1 and 3. Cytochrome c_{550} was present in fraction 4. The cytochrome c_{553i} -containing fraction was then loaded on an anion-exchange HPLC column (DEAE). Two heme-containing fractions were eluted. Cytochrome c_{553i} was present in fraction 1 and separated from cytochrome c_{551i} , which was present in fraction 2. After gel electrophoresis of the fraction containing cytochrome c_{553i} in the presence of SDS, a heme-containing band was cut out from the gel and electroeluted to remove the polyacrylamide. The purity of cytochrome c_{553i} was determined by using an anion-exchange HPLC column as well as SDS-PAGE. The absorption spectra at 77 K of the HPLC fractions containing pure cytochrome c_{553i} showed after reduction by sodium dithionite, a symmetric spectral band at 553.5 nm (data not shown). As a result, 200 μ g of cytochrome c_{553i} was purified from 25 g (wet weight) of cells.

Cloning and sequencing of gene encoding cytochrome c_{553i} . The purified protein was digested with trypsin to obtain several polypeptides. The N-terminal regions of these peptides were sequenced. On the basis of the amino acid sequence of one of these peptides, a mix of 17-mer oligonucleotides was synthesized. Clones from the *EcoRI* bank reacting positively on this probe were isolated. From one of

FIG. 2. Nucleotide sequences and deduced amino acid sequences of the 3' part of ORF1, the *cycB* gene, and the 5' part of ORF2 of *P. denitrificans*. Indicated are the putative Shine-Dalgarno sequences (underlined), signal sequences (in italics), signal peptide cleavage sites (*), and inverted repeat (double underline). The heme-binding site and the possible sixth iron ligand methionine of cytochrome c_{553i} are indicated in boldface. The amino acid sequences which are underlined with wavy lines represent the N-terminal sequences from the isolated polypeptides obtained after digestion of the purified cytochrome c_{553i} with trypsin. The nucleotide sequence used for construction of the mixed oligonucleotide is also indicated by wavy underlining. The slash (/) indicates the position of the last amino acid of cytochrome c_{553i} and the first amino acid of the ORF2 gene product.

N S E T Y G R P A V V A E Y S T A Q N G E D E N T
 GAAT TCG GAA ACC TAT GGC CGT CCG GCC GTG GTG GCC GAA TAC TCG ACC GCC CAG AAC GGC GAG GAC GAG AAC ACC
EcoRI 20 40 60
 T G V C P A A L G T K D Q Q P A A F S P K T N L F
 ACC GGC GTC TGC CCT GCG GCA CTG GGC ACC AAG GAC CAG CAG CCG GCG GCC TTC TCG CCC AAG ACC AAC CTG TTC
 80 100 120 140
 Y V P T N H V C H D Y E P F R V A Y T A G Q P Y V
 TAT GTG CCG ACG AAC CAC GTC TGC ATG GAT TAC GAG CCG TTC CGG GTG GCC TAT ACC GCC GGC CAG CCC TAT GTC
 160 180 200 220
 G A T L S M Y P A P N S H G G M G N F I A W H N T
 GGC GCC ACG CTG TCC ATG TAT CCC GCG CCG AAC AGC CAT GGC GGC ATG GGC AAC TTC ATC GCC TGG CAC AAC ACC
 240 260 280 300
 T G E I K W S V P E Q F S V W S G A L A T A G D V
 ACG GGC GAG ATC AAG TGG TCC GTT CCC GAG CAG TTC TCG GTC TGG TCG GGC GCT TTG GCT ACG GCG GGC GAC GTG
 320 340 360
 V F Y G T L E G Y L K P V D A Q T G E E L Y K F K
 GTC TTC TAC GGC ACG TTG GAG GGC TAT CTG AAG CCC GTC GAT GCC CAG ACG GGC GAG GAG CTT TAC AAG TTC AAG
 380 400 420 440
 T P S G I I G N V M T Y E H G G K Q Y V G I L S G
 ACC CCC TCG GGC ATC ATC GGC AAC GTG ATG ACC TAC GAA CAT GGC GGC AAG CAG TAT GTC GGC ATC CTG TCG GGT
 460 480 500 520
 V G G W A G I G L A A G L T N P N D G L G A V G G
 GTC GGC GGC TGG GCC GGG ATC GGC CTT GCC GCG GGC CTG ACC AAT CCC AAC GAT GGG CTT GGC GCG GTG GGC GGC
 540 560 580 600
 Y A S L S Q Y T E L G G Q L T V F E L P G
 TAT GCC TCG CTG TCG CAA TAT ACC GAG CTG GGC GGC CAG CTG ACC GTG TTC GAA CTG CCG GGC TAATACTTTGGTCC
 620 640 660
 M T S
 GGAAGCAAACGTGACTCGAAACTGGCGCCCGGAGGTAACCTTGGGGCGCCCATCATCTTCGGGTGACAGCCAGGGAGGAATTCATG ACC AGC
 680 700 720 740 760
 K T T A S L L A I C V A C A A S A I A * G T A L C A
 AAG ACG ACC GCC AGT CTT TTG GCG ATC TGT GTC GCA TGC GCG TCT GCC ATC GCC GGA ACG GCC CTT TGC GCA
 780 800 820 840
 D R R N A P A O A G A G A A A A V S G D A H E Q P
 GAC CGC CGA AAC GCC CCG GCC CAG GCC GGG GCA GGC GCT GCC GCC GCC GTC TCG GGC GAT GCG CAC GAG CAA CCG
 860 880 900 920
 A A E A P A E E E E E T P A V A A T D G K L V L P
 GCC GCG GAA GCG CCC GCC GAA GAG GAG GAG ACG CCA GCG GTC GCC GCA ACG GAC GGC AAG CTT GTG CTG CCG
 940 960 980 1000
 N G Q D I T P D H M E N G R W Y T A E D I P T Y K
 AAC GGC CAG GAC ATC ACC CCG GAC CAT ATG GAG AAC GGC CGG TGG TAT ACG GCC GAG GAT ATC CCG ACC TAC AAG
 1020 1040 *EcoRV*
 I A E E G A V D W A T F S G Y R R Y S A E C H V C
 ATC GCC GAG GAA GGC GCG GTG GAT TGG GCG ACC TTC TCG GGC TAT CGC GCG TAT TCC GCC GAA TCG CAT GTC TCG
 1080 1100 1120 1140
 H G P D G E G S T Y A P A L R K S V L T M G Y Y D
 CAC GGC CCG GAT GGC GAG GGT TCG ACC TAT GCC CCG GCC CTG CGG AAA TCG GTG CTG ACC ATG GGC TAT TAC GAT
 1160 1180 1200
 F L E I A A S G K Q E V N T A A N L V M P A F G T
 TTC CTG GAG ATC GCC GCC TCG GGC AAG CAA GAG GTC AAC ACC GCC GCC AAT CTG GTC ATG CCG GCC TTT GGC ACC
 1240 1260 1280 1300
 N K N V W C Y I D D I Y A Y L L A R G T G G D L P R
 AAC AAG AAC GTC TGG TGC TAT ATC GAC GAC ATC TAT GCC TAT CTG CTG CCG CCG GGC ACG GGA GAC TTG CCG CCG
 1320 1340 1360
 G R P A K R E D K S D E F V A O E D S C M S G/M R
 GGC GCG CCG GCG AAG AGA GAG GAC AAG TCC GAT GAA TTC GTT GCG CAG GAA GAT TCC TGC ATG ACG GGATGAGA
 1380 1400 *EcoRI* 1420 1440
 R A L T L A V L A T C C A V L P A L A * Q V A D L R S
 CGC GCC CTT ACC CTT GCC GTG CTG GCG ACC TGC GCC GTG CTG CCC GCC TTC GCG CAG GTT GCC GAC CTG CGC TCC
 1460 1480 1500 1520
 K T E F R V C A D P A A V P M S S Q D G K G F E N
 AAG ACC GAG TTC CCG GTC TGT GCC GAT CCC GCC GCG GTG CCG ATG TCG TCC CAG GAC GGC AAG GGC TTC GAG AAC
 1540 1560 1580 1600
 R I A Q L F A E K L G V P V A Y T W F P Q S R L H
 CGC ATC GCC CAG CTT TTC GCC GAA AAG CTG GGC GTG CCG GTC GCC TAT ACC TGG TTC CCG CAG TCC CCG CTT CAT
 1620 1640 1660
 P Q E P A R
 CCG CAA GAA CCT GCG GCG
 1680 *BssHII*

these, its plasmid (pWR20) was isolated for further characterization and sequence analysis. A restriction map of pWR20 and the sequencing strategy are shown in Fig. 1. A major part of the *cycB* gene was located on plasmid pWR20 containing a 1.4-kb chromosomal *EcoRI* fragment. An additional 278 bp were located on a 7-kb *SallI* fragment.

The gene encoding cytochrome *c*_{553i}, as presented in Fig. 2, starts at position 769. The sequences underlined with wavy lines represent the sequences from the polypeptides from which the N-terminal regions were sequenced. These sequences confirm the correctness of the chosen reading frame. A putative Shine-Dalgarno sequence (AGGGAGGA), indicating a ribosome-binding site, was present 6 bp upstream from the initiation codon. The deduced amino acid residues at the N-terminal region form a typical signal peptide. A positively charged residue (Lys) at the N terminus is followed by a central hydrophobic core, presumably responsible for initiating export of the native protein across the cytoplasmic membrane. This was to be expected, since cytochrome *c*_{553i} is a periplasmic protein. The signal peptide-processing site was determined by the method of Von Heijne (48) and is located between the alanine residue at position 832 and the glycine residue at position 835. The *cycB* gene encodes a precursor protein of 226 amino acids with a putative signal peptide of 22 amino acid residues. Taking into account the cleavage of the signal peptide (2.077 kDa) and assembly of the heme (0.640 kDa), the calculated molecular weight of the mature protein is 22,427. The codon usage is typical for *P. denitrificans* genes. The G+C content of the *cycB* gene is 65.0%. There is a 79.2% preference for a G or a C at position 3 in the codons. Based on the homology of several cytochromes *c* of different bacteria (1), the methionine residue in position 1285 is probably the sixth ligand of the heme iron. The deduced amino acid sequence of cytochrome *c*_{553i} at its N terminus in a 102-amino-acid overlap is 25.5% identical with cytochrome *c*₁ of *P. denitrificans* (28). The sequence shows at its C-terminal part in a 104-amino-acid overlap an identity of 35% with the determined amino acid sequence of cytochrome *c*₅₅₅ of *Methylococcus capsulatus* (1). No significant homology was found between

cytochrome *c*_{553i} and cytochrome *c*_{551i}, the cytochrome that is encoded by the *maxG* gene.

The gene encoding cytochrome *c*_{553i} was flanked by two interesting open reading frames. As shown in Table 2, the deduced amino acid sequence of the open reading frame upstream of the *cycB* gene (designated ORF1) shows homology with several quinoproteins, such as methanol dehydrogenase from *P. denitrificans* (22) and *Methylobacterium extorquens* AM1 (2), alcohol dehydrogenase from *Acetobacter aceti* (26), and glucose dehydrogenase from both *Acinetobacter calcoaceticus* (12) and *E. coli* (11). It was shown by Cleton-Jansen et al. (11) that these quinoproteins contain in a stretch of 50 amino acids several conserved amino acids. Figure 3 shows that these sequences could also be found in the gene product of ORF1. The deduced amino acid sequence of the open reading frame downstream of *cycB* (designated ORF2) shows homology with the *maxJ* gene products of both *P. denitrificans* (42) and *M. extorquens* AM1 (2).

The start codon of the deduced amino acid sequence of ORF1 is not present on the isolated *EcoRI* fragment. The termination codon TAA is located at position 665. Downstream from this stop codon, a 26-bp long inverted repeat was found, which might form a hairpin structure that could act as a transcription terminator (nucleotides 707 to 733 as shown in Fig. 2). The 3' part of the open reading frame sequenced so far has a G+C content of 64.6% and an 86.4% preference for a G or a C at position 3 of the codons.

Immediately downstream the *cycB* gene, ORF2 was found. Its possible start codon (at position 1446) shows overlap with the termination codon of the *cycB* gene. The positions of two possible ribosome-binding sites (AGGA at position 1424 and GAG at position 1440) are indicated. The N-terminal part of the sequence has characteristics of a signal sequence. Positively charged residues (Arg, Arg) are followed by a central hydrophobic core. A helix-breaking residue (Pro) could be found four residues before the cleavage site, which was determined by the method of Von Heijne (48). This peptidase cleavage site is located between the alanine residue at position 1503 and the glutamine residue at position 1506. Therefore, the protein contains a 20-residue signal peptide. The part of ORF2 sequenced so far has a G+C content of 67.1% and an 80.7% preference for a G or a C at position 3 in the codons.

Construction of *cycB* mutant. The plasmid WR20, harboring a major part of the gene encoding cytochrome *c*_{553i}, was digested with *EcoRV* (Fig. 1). In this unique *EcoRV* site, a 1.4-kb *HincII* fragment of pUC4K, containing the kanamycin resistance gene from transposon Tn903, was inserted. To exchange the interrupted gene for the wild-type gene in the chromosome of *P. denitrificans*, we cloned the 2.8-kb *EcoRI* fragment in the *EcoRI* site of the suicide vector pGRPd1 (41). The wild-type gene in the chromosome of *P. denitrificans* was exchanged with the mutated gene by homologous recombination. For a complete recombination, resulting in a mutant strain, a crossover event at both sides of the kanamycin resistance gene was necessary. Kanamycin-resistant colonies were obtained with a frequency of 10⁻⁵, of which 36% were shown to have streptomycin resistance, caused by a single crossover and subsequent insertion of the vector which contains the streptomycin marker.

The exchange of the wild-type gene with the mutated gene was verified by Southern analysis of genomic DNA. Chromosomal DNA of the parent and mutant strains was isolated and restricted with *EcoRI*. The DNA was characterized by probing it with the 1.4-kb fragment of pWR20. From DNA of

TABLE 2. Homology of the deduced amino acid sequences of the 3' part of ORF1 and the 5' part of ORF2 of *P. denitrificans* with several quinoproteins

Gene product	ORF1		ORF2	
	Amino acid overlap	% Identical amino acids	Amino acid overlap	% Identical amino acids
MoxF ^a	204	47.1	— ^h	—
MoxF ^b	220	49.5	—	—
ADH ^c	216	28.7	—	—
GDH-A ^d	74	37.8	—	—
GDH ^e	74	36.5	—	—
MoxJ ^f	—	—	124	31.0
MoxJ ^g	—	—	126	35.0

^a The *moxF* gene product of methanol dehydrogenase of *P. denitrificans* (22).

^b The *moxF* gene product of methanol dehydrogenase of *M. extorquens* AM1 (2).

^c Alcohol dehydrogenase of *Acetobacter aceti* (26).

^d Glucose dehydrogenase of *Acinetobacter calcoaceticus* (12).

^e Glucose dehydrogenase of *E. coli* (11).

^f The *moxJ* gene product of methanol dehydrogenase of *P. denitrificans* (42).

^g The *moxJ* gene product of methanol dehydrogenase of *M. extorquens* AM1 (2).

^h —, no homology.

ORF1 <i>P. d</i>	EGYLKPVDAQTGEELYKFKTPSGIIGNVMTYEHGGKQYVIGILSGVGGWAG	
	524	573
MoxF <i>P. d</i>	DGF IKARDSDTGDLWKFKLPSGVIGHPMTYHKDGRQYVAIMYGVGGWPG	
	519	568
MoxF <i>M. e</i> AM1	DGYLKARDSDTGDLWKFKIPSGAIGYPMYTHKGTQYVAIYYGVGGWPG	
	537	584
ADH <i>A. a</i>	NGEFHAYDATNGSDLYKFDAQSGI IAPPMTYSVNGKQYVAVEVGGGI--	
	736	785
GDH-A <i>A. c</i>	DNYLRAFNVNNGKLLWEARIPAGGQATPMTYEINGKQYVIMAGGHGSFG	
	730	779
GDH <i>E. c</i>	DNYLRAYNMSNGEKLWQGRLPAGGQATPMTYEVNGKQYVVISAGGHGSFG	

FIG. 3. Comparison of homologous domains of the deduced amino acid sequence of ORF1 of *P. denitrificans* (ORF1 *P. d*), the gene product of *moxF* of methanol dehydrogenase of *P. denitrificans* (MoxF *P. d*) (22), the gene product of *moxF* of methanol dehydrogenase of *M. extorquens* AM1 (MoxF *M. e* AM1) (2), alcohol dehydrogenase of *Acetobacter acetii* (ADH *A. a*) (26), glucose dehydrogenase of *Acinetobacter calcoaceticus* (GDH-A *A. c*) (12), and glucose dehydrogenase of *E. coli* (GDH *E. c*) (11). Identical amino acid residues are indicated in boldface.

the parent strain, a 1.4-kb *EcoRI* fragment, corresponding in size to the wild-type DNA fragment, showed hybridization with the probe. From the *cycB* mutant, a 2.8-kb *EcoRI* fragment, corresponding in size to the mutated DNA fragment, showed hybridization with the probe. This clearly demonstrates that in the mutant strain the wild-type *cycB* was replaced by the mutated one (data not shown).

Biochemical and physiological analysis of *cycB* mutant. SDS-PAGE was used to investigate whether cytochrome *c*_{553i} was absent in the *cycB* mutant. Periplasmic and cytoplasmic membrane-bound proteins, isolated from parent and mutant strains, both grown in batch culture with methylamine as the sole carbon source, were analyzed. As shown in Fig. 4, it is clear that in the periplasmic fraction isolated from the mutant, no protein with covalently bound heme of the estimated 30 kDa was found. This is in contrast to the cytoplasmic membrane fraction of the mutant, in which a *c*-type cytochrome of about 30 kDa was present. The apparently increased levels of the 22-kDa cytochrome *c*_{553i} in the periplasmic fraction of the mutant strain are caused by decreased levels of this cytochrome in the periplasmic fraction of the parent strain resulting from degradation of this unstable cytochrome *c*. For the other *c*-type cytochromes, no differences were observed between the mutant and the parent strain.

The physiological consequences of the mutation were studied by growth experiments under different conditions (Table 3). The growth parameters for heterotrophic growth

on succinate, under aerobic as well as under anaerobic conditions in the presence of nitrate, were determined in batch cultures. No differences could be detected for growth yield or maximum specific growth rate between the parent and mutant strain. Growth on methylamine was studied in both batch and continuous cultures. Also in this case, no differences between the parent and the mutant strain were observed in either growth yield or maximum specific growth rate. Chemostat cultures were used for studies of growth on methanol. No differences in specific growth yield between the parent strain and the mutant strain were observed. The maximum specific growth rate of the mutant strain growing on methanol, however, was decreased about 25%.

DISCUSSION

The experimental results pertaining to cytochrome *c*_{553i} described in this report should be discussed in connection with previously published results on the study of cytochromes *c* in *P. denitrificans* and in other methylotrophic bacteria as well. Upon previous analyses, it appeared that *P. denitrificans* can form a membrane-bound and a soluble *c*-type cytochrome, both of which have apparent molecular masses of around 30 kDa on SDS gels (7, 9). Whether or not these cytochromes are different entities was unknown at that time, but from the results presented here it can be concluded that they are encoded by different structural genes. Mutation in *cycB*, the gene encoding cytochrome *c*_{553i}, results in the

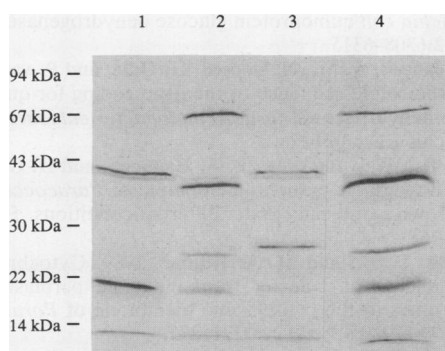


FIG. 4. SDS-PAGE of periplasmic proteins (lanes 1 and 3) and membrane-bound proteins (lanes 2 and 4) of the *P. denitrificans* parent strain (lanes 3 and 4) and the *cycB* mutant strain (lanes 1 and 2). Cells were grown in batches on methylamine. Covalently bound heme was stained with 3,3',5,5'-tetramethylbenzidine. The relative molecular masses are indicated at the left.

TABLE 3. Growth characteristics of the parent strain (WT) and the *cycB* mutant strain (*cycB*-MT) under different growth conditions

Carbon source	Electron acceptor	Growth yield ^a		Growth rate ^b	
		WT	<i>cycB</i> -MT	WT	<i>cycB</i> -MT
Batch cultures					
Glucose	Oxygen	2.0	2.0	0.26	0.26
Succinate	Oxygen	2.1	2.1	0.42	0.40
Succinate	Nitrate	2.2	2.2	0.32	0.33
Methylamine	Oxygen	1.8	1.9	0.14	0.14
Continuous cultures					
Methylamine	Oxygen	11.0	11.7	0.14	0.14
Methanol	Oxygen	10.5	10.5	0.16	0.12

^a For batch cultures, in maximum optical density at 660 nm (*A*₆₆₀ units); for continuous cultures, in molecular growth yield (grams of biomass per mole of substrate).

^b For both batch and continuous cultures, in maximum specific growth rate (hour⁻¹).

disappearance of the soluble cytochrome but leaves its membrane-bound equivalent unimpaired.

During methylotrophic growth, four soluble cytochromes *c* are located in the periplasm of *P. denitrificans*: *c*₅₅₀, *c*_{551i}, *c*_{553i}, and a peroxidase. Their functions were studied by in vitro experiments as well as by physiological experiments on mutant strains specifically lacking one of these cytochromes. The in vitro studies did not reveal corresponding results about the function of cytochrome *c*_{553i}. Previously, cytochrome *c*_{553i} was thought to be the electron acceptor of methanol dehydrogenase (14). Recently, however, it was found that during in vitro experiments with purified cytochrome *c*_{553i} and methanol dehydrogenase, no reduction of the cytochrome or production of formaldehyde occurs (31). Our physiological studies, using a mutant strain lacking cytochrome *c*_{553i} in the chemostat, exclude a function of cytochrome *c*_{553i} in the electron transfer from methylamine dehydrogenase to oxygen, since neither the molecular growth yield nor the maximum specific growth rate was affected by this mutation. Also, the function of *c*_{553i} in transport of electrons from methanol dehydrogenase to oxygen cannot be of decisive importance. The mutant still grows on methanol as the exclusive carbon and energy source, albeit with a lowered maximum specific growth rate. From the latter result, an involvement of the cytochrome in methanol oxidation might be deduced. It is unlikely that this involvement includes the transfer of electrons between cytochrome *c*_{551i} and cytochrome *c*₅₅₀. The latter was found to mediate transfer of electrons to the cytoplasmic membrane in vitro (14), since the depletion of cytochrome *c*₅₅₀ does not affect the maximum specific growth rate on methanol (43). Decisive for the future elucidation of the more specific function of cytochrome *c*_{553i} might be the nature of the location of its structural gene, *cycB*, which is centered between two open reading frames. The deduced amino acid sequences of ORF1 and ORF2 show homology with the gene products of, respectively, *moxF* and *moxJ* of *P. denitrificans* (22, 42) and *M. extorquens* AM1 (2). The genetic organization ORF1-*cycB*-ORF2, however, is different from the sequence *moxF-moxJ-moxG-moxI*, where *moxF* and *moxI* encode the subunits of methanol dehydrogenase, *moxJ* probably encodes a chaparoninlike protein, and *moxG* encodes cytochrome *c*_{551i} (22, 42). Moreover, there is no homology in the amino acid sequences of the cytochromes *c*_{553i} and *c*_{551i}. Since it is also known that deletions in the *moxFJGI* cluster of *P. denitrificans* unambiguously result in the impossibility of growth on methanol (42), ORF1-*cycB*-ORF2 apparently is unlikely to be encoding part of an *iso*-methanol oxidation system.

ORF1 also exhibits homology with PQQ-dependent enzymes other than methanol dehydrogenase, like glucose dehydrogenases from *Acinetobacter calcoaceticus* (12) and *E. coli* (11) and alcohol dehydrogenase from *Acetobacter acetii* (26). In all cases, a stretch of 50 amino acids at the C terminus might be involved in PQQ binding (11). This might indicate that cytochrome *c*_{553i} is part of a periplasmically located, PQQ-dependent dehydrogenase system with a substrate specificity unknown at the moment.

Although the cytochrome is hardly detectable, *M. extorquens* AM1 also contains a periplasmic cytochrome *c*₅₅₃ in addition to cytochromes *c*_L and *c*_H, which are equivalents of cytochromes *c*_{551i} and *c*₅₅₀ in *P. denitrificans*. However, a *moxD* mutant of *M. extorquens* AM1, which contains no methanol dehydrogenase protein, forms large amounts of that *c*₅₅₃-type cytochrome (15). Its molecular mass of 23 kDa and its ability to bind CO, equal to that of cytochrome *c*_{553i}

in *P. denitrificans* (CO binding not shown here), suggest similarity between these *c*-type cytochromes in both organisms. The physiological function of cytochrome *c*₅₅₃ in *M. extorquens* AM1 is unknown at the moment. In vitro experiments show that this cytochrome mediates electrons between the cytochromes *c*_L and *c*_H (15), but the physiological relevance of this phenomenon is unknown.

ACKNOWLEDGMENTS

This research was supported by the Netherlands Foundation for Chemical Research, with financial aid from the Netherlands Organization for the Advancement of Science.

REFERENCES

- Ambler, R. P., H. Dalton, T. E. Meyer, R. G. Bartsch, and M. D. Kamen. 1986. The amino acid sequence of cytochrome *c*₅₅₅ from the methane-oxidizing bacterium *Methylococcus capsulatus*. *Biochem. J.* 233:333-337.
- Anderson, D. J., C. J. Morris, D. N. Nunn, C. Anthony, and M. E. Lidström. 1990. Nucleotide sequence of the *Methylobacterium extorquens* AM1 *moxF* and *moxJ* genes involved in methanol oxidation. *Gene* 90:173-176.
- Anthony, C. 1975. The microbial metabolism of C₁ compounds. The cytochromes of *Pseudomonas* AM1. *Biochem. J.* 146:289-298.
- Anthony, C. 1982. The biochemistry of methylotrophs, p. 177-184. Academic Press, Inc. (London), Ltd., London.
- Anthony, C. 1986. The bacterial oxidation of methane and methanol. *Adv. Microb. Physiol.* 27:113-210.
- Berry, E. A., and B. L. Trumpower. 1985. Isolation of ubiquinol oxidase from *Paracoccus denitrificans* and resolution into cytochrome *bc*₁ and cytochrome *c-aa*₃ complexes. *J. Biol. Chem.* 260:2458-2467.
- Bosma, G. 1989. Ph.D. thesis. Free University, Amsterdam, The Netherlands.
- Bosma, G., M. Braster, A. H. Stouthamer, and H. W. Van Verseveld. 1987. Isolation and characterisation of ubiquinol oxidase complexes from *Paracoccus denitrificans* cells cultured under various limiting growth conditions in the chemostat. *Eur. J. Biochem.* 165:665-670.
- Bosma, G., M. Braster, A. H. Stouthamer, and H. W. Van Verseveld. 1987. Subfractionation and characterisation of soluble *c*-type cytochromes from *Paracoccus denitrificans* cultured under various limiting conditions in the chemostat. *Eur. J. Biochem.* 165:657-664.
- Chang, J. P., and J. G. Morris. 1962. Studies on the utilization of nitrate by *Micrococcus denitrificans*. *J. Gen. Microbiol.* 29:301-310.
- Cleton-Jansen, A.-M., N. Goosen, O. Fayet, and P. Van De Putte. 1990. Cloning, mapping, and sequencing of the gene encoding *Escherichia coli* quinoprotein glucose dehydrogenase. *J. Bacteriol.* 172:6308-6315.
- Cleton-Jansen, A.-M., N. Goosen, G. Odle, and P. van de Putte. 1988. Nucleotide sequence of the gene coding for quinoprotein glucose dehydrogenase from *Acinetobacter calcoaceticus*. *Nucleic Acids Res.* 16:6228.
- Cox, J. C., W. J. Ingledew, B. A. Haddock, and H. G. Lawford. 1978. The variable cytochrome content of *Paracoccus denitrificans* grown aerobically under different conditions. *FEBS Lett.* 93:261-265.
- Davidson, V. L., and M. A. Kumar. 1989. Cytochrome *c*-550 mediates electron transfer from inducible periplasmic *c*-type cytochromes to the cytoplasmic membrane of *Paracoccus denitrificans*. *FEBS Lett.* 245:271-273.
- Day, D. J., D. N. Nunn, and C. Anthony. 1990. Characterization of a novel soluble *c*-type cytochrome in a *moxD* mutant of *Methylobacterium extorquens* AM1. *J. Gen. Microbiol.* 136:181-188.
- De Vries, G. E., N. Harms, K. Maurer, A. Papendrecht, and A. H. Stouthamer. 1988. Physiological regulation of *Paracoccus denitrificans* methanol dehydrogenase synthesis and activity. *J.*

- Bacteriol. 170:3731-3737.
17. De Vries, G. E., J. Hoogendijk, and N. Harms. 1986. Expression of the *Escherichia coli* gene coding for the bacteriophage lambda adhesion protein lamB in *Paracoccus denitrificans*. *Antonie van Leeuwenhoek J. Microbiol. Serol.* 52:366-368.
 18. Duine, J. A., J. Frank, Jr., and P. E. J. Verwiël. 1980. Structure and activity of the prosthetic group of methanol dehydrogenase. *Eur. J. Biochem.* 108:187-192.
 19. Edman, P., and G. Begg. 1967. A protein sequenator. *Eur. J. Biochem.* 1:80-91.
 20. Ferguson, S. J. 1987. Denitrification: a question of the control and organization of electron and ion transport. *Trends Biochem. Sci.* 12:354-357.
 21. Goodhew, C. F., I. B. H. Wilson, D. J. B. Hunter, and W. Pettigrew. 1990. The cellular location and specificity of bacterial cytochrome *c* peroxidases. *Biochem. J.* 271:707-712.
 22. Harms, N., G. E. de Vries, K. Maurer, J. Hoogendijk, and A. H. Stouthamer. 1987. Isolation and nucleotide sequence of the methanol dehydrogenase structural gene from *Paracoccus denitrificans*. *J. Bacteriol.* 169:3969-3975.
 23. Harms, N., and R. J. M. Van Spanning. 1991. C₁ metabolism in *Paracoccus denitrificans*. *Genetics of Paracoccus denitrificans*. *J. Bioenerg. Biomembr.* 23:187-210.
 24. Husain, M., and V. L. Davidson. 1986. Characterization of two inducible periplasmic *c*-type cytochromes from *Paracoccus denitrificans*. *J. Biol. Chem.* 261:8577-8580.
 25. Husain, M., and V. L. Davidson. 1987. Purification and properties of methylamine dehydrogenase from *Paracoccus denitrificans*. *J. Bacteriol.* 169:1712-1717.
 26. Inoue, T., M. Sunagawa, A. Mori, C. Imai, M. Fukuda, M. Takagi, and Y. Keiji. 1989. Cloning and sequencing of the gene encoding the 72-kilodalton dehydrogenase subunit of alcohol dehydrogenase from *Acetobacter aceti*. *J. Bacteriol.* 171:3115-3122.
 27. John, P., and F. R. Whatley. 1975. *Paracoccus denitrificans* and the evolutionary origin of the mitochondrion. *Nature (London)* 254:495-498.
 28. Kurowski, B., and B. Ludwig. 1987. The genes of the *Paracoccus denitrificans* bc₁ complex. *J. Biol. Chem.* 262:13805-13811.
 29. Laemmli, U. K. 1970. Cleavage of structural proteins during the assembly of the head of bacteriophage T4. *Nature (London)* 227:680-685.
 30. Lawford, H. G., J. C. Cox, P. B. Garland, and B. A. Haddock. 1976. Electron transport in aerobically grown *Paracoccus denitrificans*: kinetic characterization of the membrane-bound cytochromes and the stoichiometry of respiration-driven proton translocation. *FEBS Lett.* 64:369-374.
 31. Long, A. R., and C. Anthony. 1991. Characterization of the periplasmic cytochromes *c* of *Paracoccus denitrificans*: identification of the electron acceptor for methanol dehydrogenase, and description of a novel cytochrome *c* heterodimer. *J. Gen. Microbiol.* 137:415-425.
 32. Lowry, O. H., N. J. Rosebrough, A. L. Farr, and R. J. Randall. 1951. Protein measurement with the Folin phenol reagent. *J. Biol. Chem.* 193:265-275.
 33. Maniatis, T., E. F. Fritsch, and J. Sambrook. 1982. *Molecular cloning: a laboratory manual*. Cold Spring Harbor Laboratory, Cold Spring Harbor, N.Y.
 34. Messing, J., R. Crea, and P. H. Seeburg. 1981. A system for shotgun DNA sequencing. *Nucleic Acids Res.* 9:309-321.
 35. Norrander, J., T. Kempe, and J. Messing. 1983. Construction of improved M13 vectors using oligonucleotide-directed mutagenesis. *Gene* 27:100-106.
 36. Pearson, W. R., and D. J. Lipman. 1988. Improved tools for biological sequence comparison. *Proc. Natl. Acad. Sci. USA* 85:2444-2448.
 37. Sambrook, J., E. F. Fritsch, and T. Maniatis. 1989. *Molecular cloning: a laboratory manual*, 2nd ed. Cold Spring Harbor Laboratory, Cold Spring Harbor, N.Y.
 38. Sanger, F., R. Coulson, B. G. Barrel, J. H. Smith, and B. A. Roe. 1980. Cloning in single-stranded bacteriophage as an aid to rapid DNA sequencing. *J. Mol. Biol.* 143:161-178.
 39. Simon, R., U. Priefer, and A. Pühler. 1983. Vector plasmids for *in vivo* and *in vitro* manipulations of Gram-negative bacteria, p. 98-106. *In* A. Pühler (ed.), *Molecular genetics of the bacteria plant interactions*. Springer-Verlag KG, Berlin.
 40. Thomas, P. E., D. Ryan, and W. Levin. 1976. An improved staining procedure for the detection of the peroxidase activity of cytochrome P450 on SDS-polyacrylamide gels. *Anal. Biochem.* 75:168-176.
 41. Van Spanning, R. J. M., C. Wansell, N. Harms, L. F. Oltmann, and A. H. Stouthamer. 1990. Mutagenesis of the gene encoding cytochrome *c*₅₅₀ of *Paracoccus denitrificans* and analysis of the resultant physiological effects. *J. Bacteriol.* 172:986-996.
 42. Van Spanning, R. J. M., C. W. Wansell, T. de Boer, M. J. Hazelaar, H. Anazawa, N. Harms, L. F. Oltmann, and A. H. Stouthamer. 1991. Isolation and characterization of the *moxJ*, *moxG*, *moxI*, and *moxR* genes of *Paracoccus denitrificans*: inactivation of *moxJ*, *moxG*, and *moxR* and the resultant effect on methylotrophic growth. *J. Bacteriol.* 173:6948-6961.
 43. Van Spanning, R. J. M., C. W. Wansell, W. N. M. Reijnders, N. Harms, J. Ras, L. F. Oltmann, and A. H. Stouthamer. 1991. A method for introduction of unmarked mutations in the genome of *Paracoccus denitrificans*: construction of strains with multiple mutations in the genes encoding periplasmic cytochromes *c*₅₅₀, *c*_{551i}, and *c*_{553i}. *J. Bacteriol.* 173:6962-6970.
 44. Van Spanning, R. J. M., C. W. Wansell, W. N. M. Reijnders, L. F. Oltmann, and A. H. Stouthamer. 1990. Mutagenesis of the gene encoding amicyanin of *Paracoccus denitrificans* and the resultant effect on methylamine oxidation. *FEBS Lett.* 275:217-220.
 45. Van Verseveld, H. W., and G. Bosma. 1987. The respiratory chain and energy conservation in the mitochondrion-like bacterium *Paracoccus denitrificans*. *Microbiology* 116:699-709.
 46. Vieira, J., and J. Messing. 1982. The pUC plasmids, an M13mp7-derived system for insertion mutagenesis and sequencing with synthetic universal primers. *Gene* 19:259-268.
 47. Vignais, P. M., M.-F. Henry, E. Sim, and D. B. Kell. 1981. The electron transport system and hydrogenase of *Paracoccus denitrificans*. *Curr. Top. Bioenerg.* 12:115-196.
 48. Von Heijne, G. 1985. Signal sequences. The limits of variation. *J. Mol. Biol.* 184:99-105.
 49. Weber, K., and M. Osborn. 1975. Proteins and sodium dodecyl sulphate: molecular weight determination on polyacrylamide gels and related procedures, p. 179-223. *In* H. Neurath and R. L. Hill (ed.), *The Proteins*, 3rd ed., vol. 1. Academic Press, Inc., New York.
 50. Witholt, B., H. Van Heerikhuizen, and L. de Leij. 1976. How does lysozyme penetrate through the bacterial outer membrane? *Biochim. Biophys. Acta* 443:534-544.