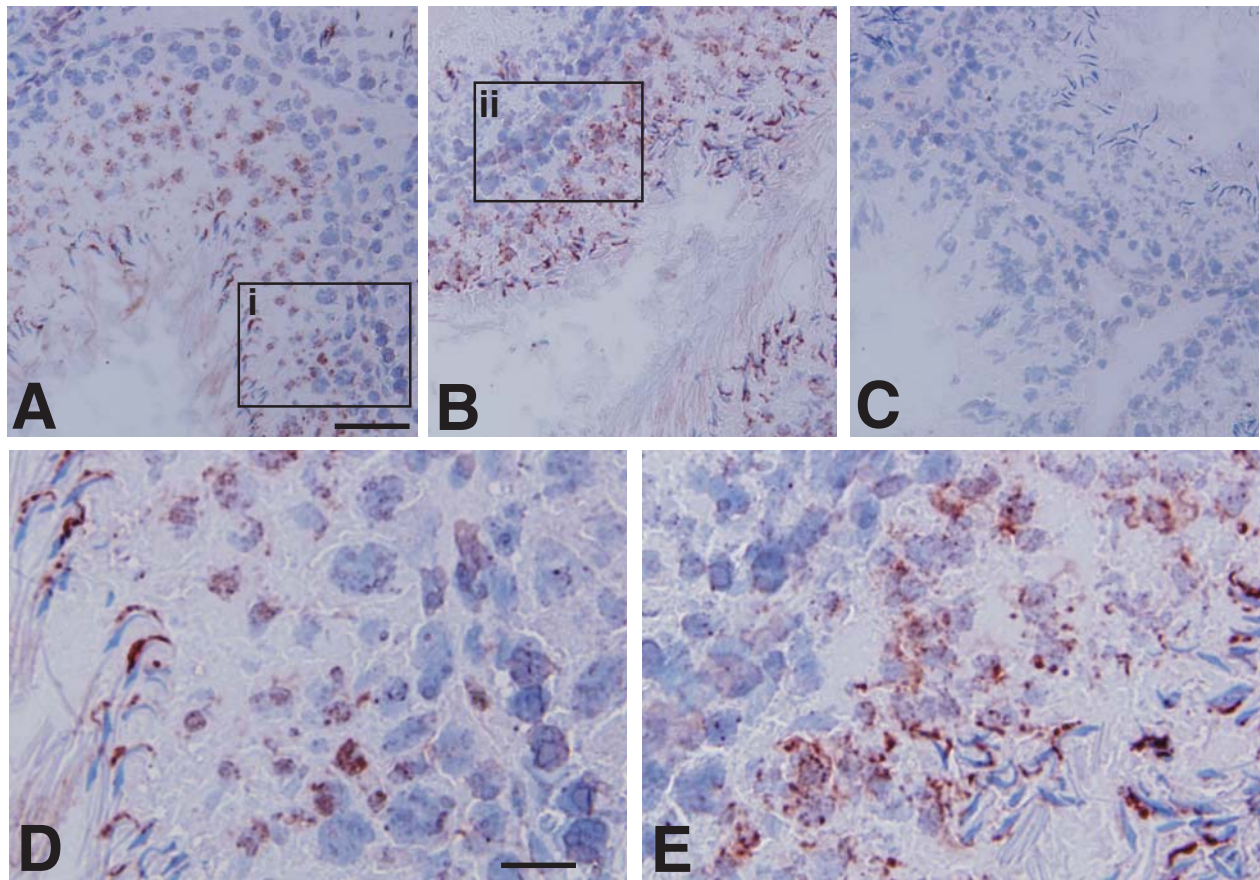


Supplementary Figure 1



Supplementary Fig. 1. Immunohistochemical localization of CAR in the seminiferous epithelium of adult rat testes . **A-B:** Frozen sections of adult rat testes were stained using a goat anti-CAR polyclonal antibody (Santa Cruz, cat. no.sc-10313, lot no. F0304). Although reddish brown precipitates were seen with germ cells at all stages of development, strongest signal associated with elongate spermatids. Sertoli cells residing at the basal compartment of the seminiferous epithelium were also stained positive for CAR. **C:** Control experiment in which testis sections were incubated with normal goat IgG at the same dilution as the primary antibody in (A-B). **D-E:** Corresponding enlarged images of the boxed area (i) and (ii) in A and B. Sickle shaped CAR staining was concentrated at the site of apical ES (see the convex side of elongating spermatid heads) in elongating spermatids in a stage VIII seminiferous tubule. CAR staining was also found at the site of the blood-testis barrier near the basement membrane. Scale bar = 50 μm in A, which also applies to B & C; Scale bar = 15 μm in D, which also applies to E.