

Supplementary Figure S1

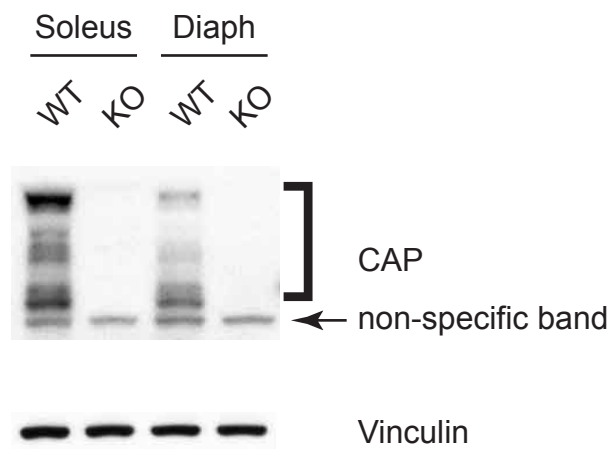


Figure S1. Specificity of the CAP antibody. Western blots of muscle lysates from wild type (WT) and CAP knockout (KO) mice with the anti-CAP antibody (Upstate Biotechnology). Vinculin was used as loading control.

Supplementary Figure S2

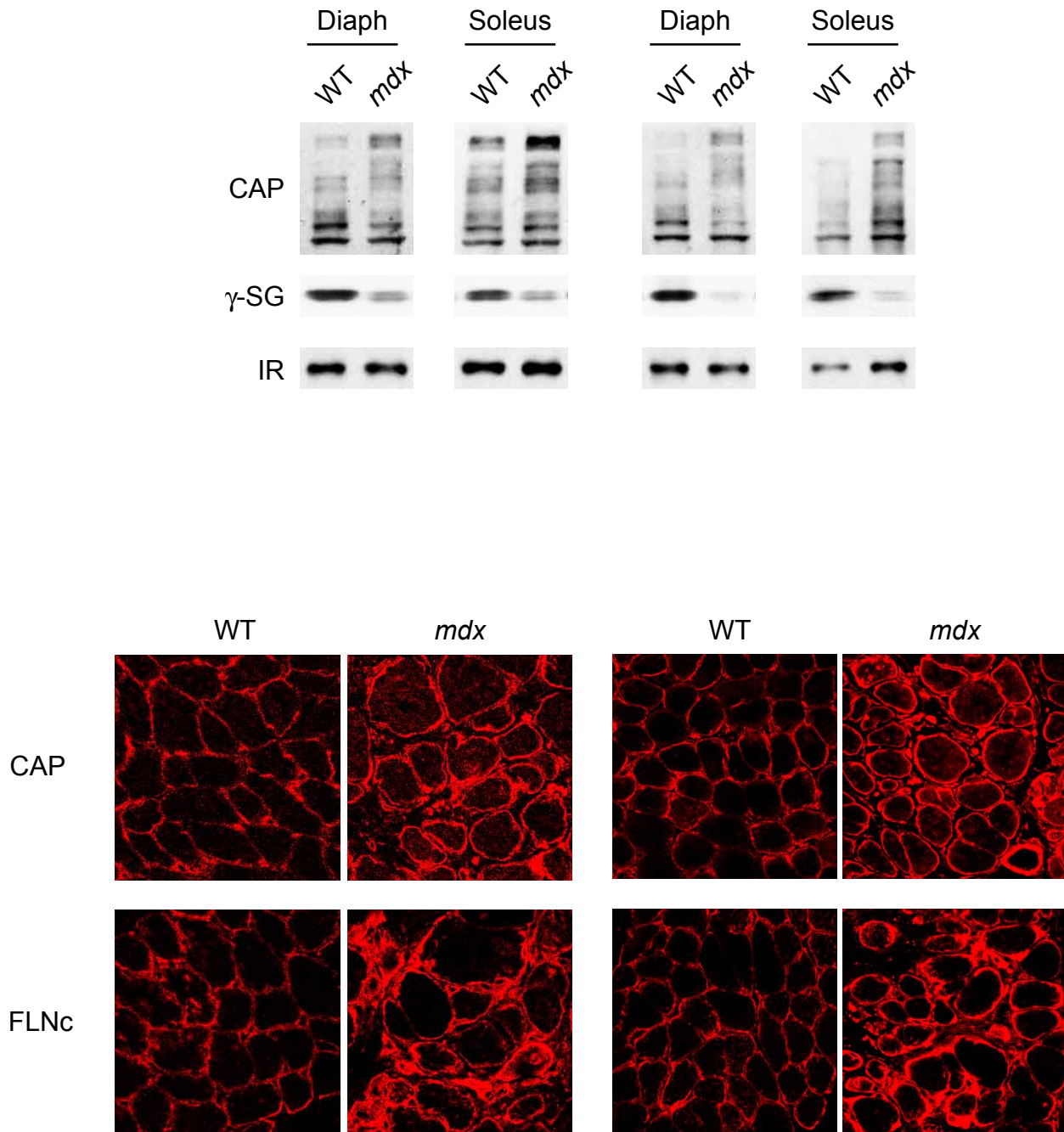


Figure S2. Expression and Localization of CAP in additional wild type and *mdx* mice. (A) Western blot analysis of CAP protein levels in Diaphragm (Diaph) and Soleus from wild type (WT) or *mdx* mice. (B) Immunostaining of CAP and FLNc on the cross sections of diaphragm from WT or *mdx* mice.