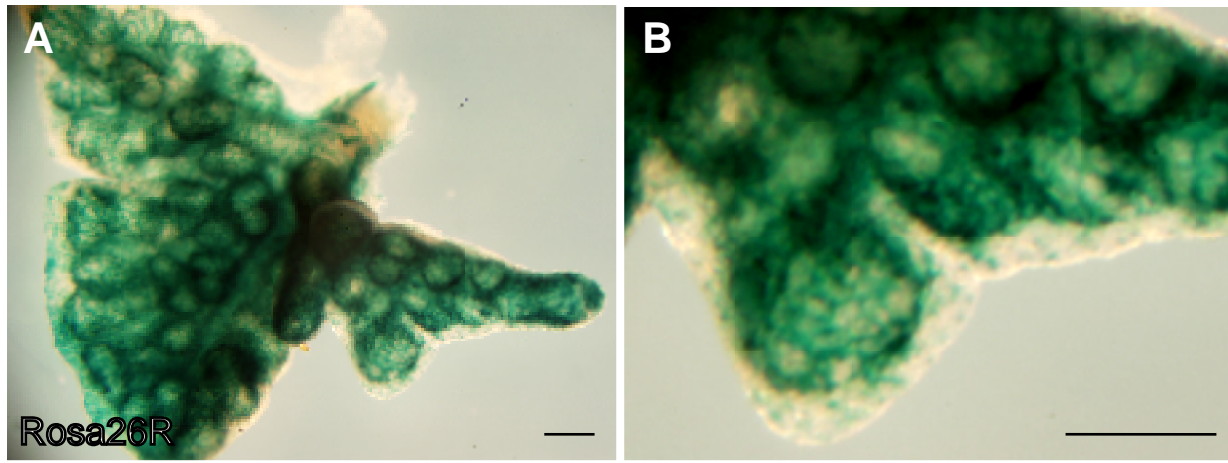
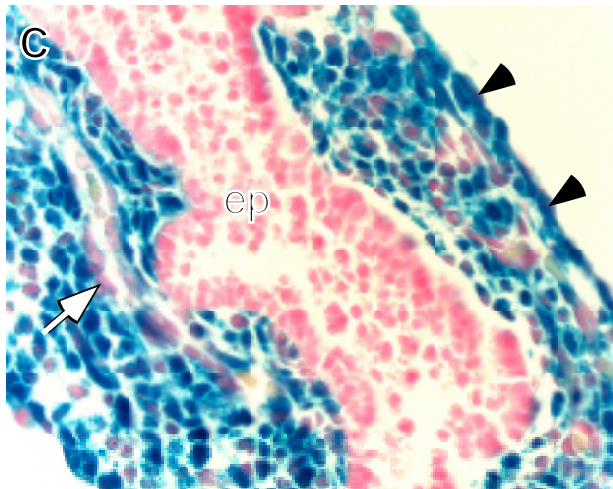


Fgfr1/2<sup>Fik1</sup>



Fgfr1/2<sup>Dermo1</sup>



**Fig. S1.**  $\beta$ -galactosidase staining of  $Fgfr1/2^{Fik1}$ ;  $Rosa26R$  lungs showing Cre activity throughout the distal capillary plexus at E13.5.  $\beta$ -galactosidase staining of  $Fgfr1/2^{Dermo1}$ ;  $Rosa26R$  lung sections showing Cre activity in mesothelium (arrowheads) but not in endothelial cells (white arrow) or epithelium (ep) at E13.5. (A) right lobes, (B,C) accessory lobe. Scale bars: 50 $\mu$ m. Histological section in C was photographed through a 40X objective.