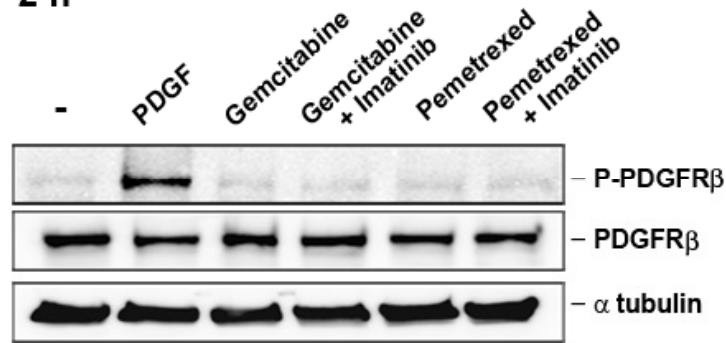
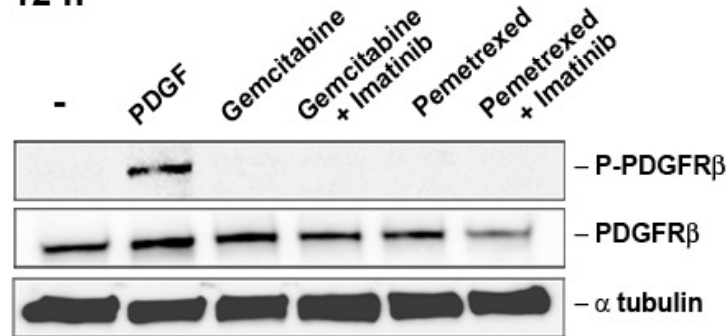


## MMP

2 h

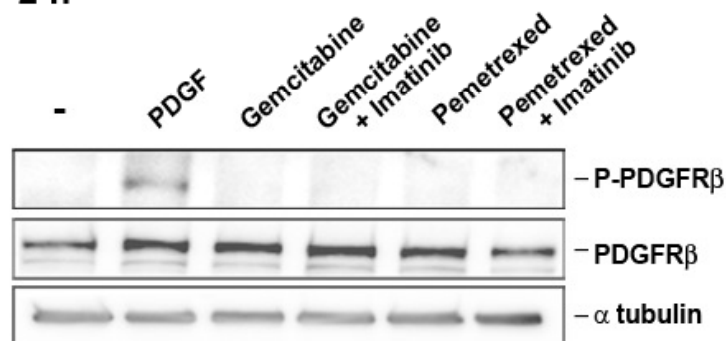


12 h

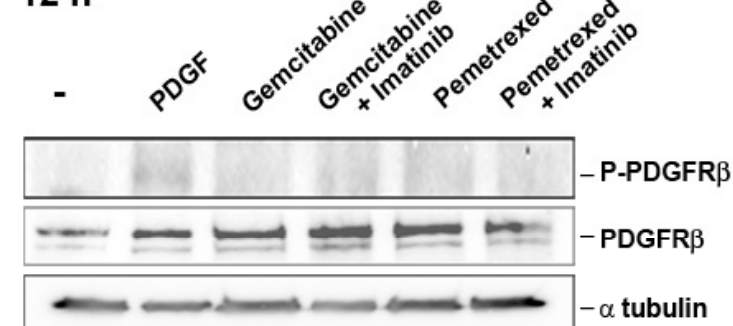


## REN

2 h



12 h



## Supplementary Fig. 2

**PDGFR $\beta$  activity in MMe cells upon Gemcitabine or Pemetrexed treatment.** Immunoblotting with antibodies recognizing PDGFR $\beta$  (PDGFR $\beta$ ) and its phosphorylated (active) form (P-PDGFR $\beta$ ) on whole lysates of MMP and REN cells.

$\alpha$ -tubulin antibodies were used as loading controls.

Cells were in low serum ( - ), stimulated with PDGF or treated 2 or 12 hours with LC50 concentrations of the indicated chemotherapeutics in presence or absence of 10  $\mu$ M Imatinib.