

Figure 1a Kaplan-Meier curves indicating the proportion of patients that has improved 1 or more grades on the GBS disability score during 52 weeks of follow-up

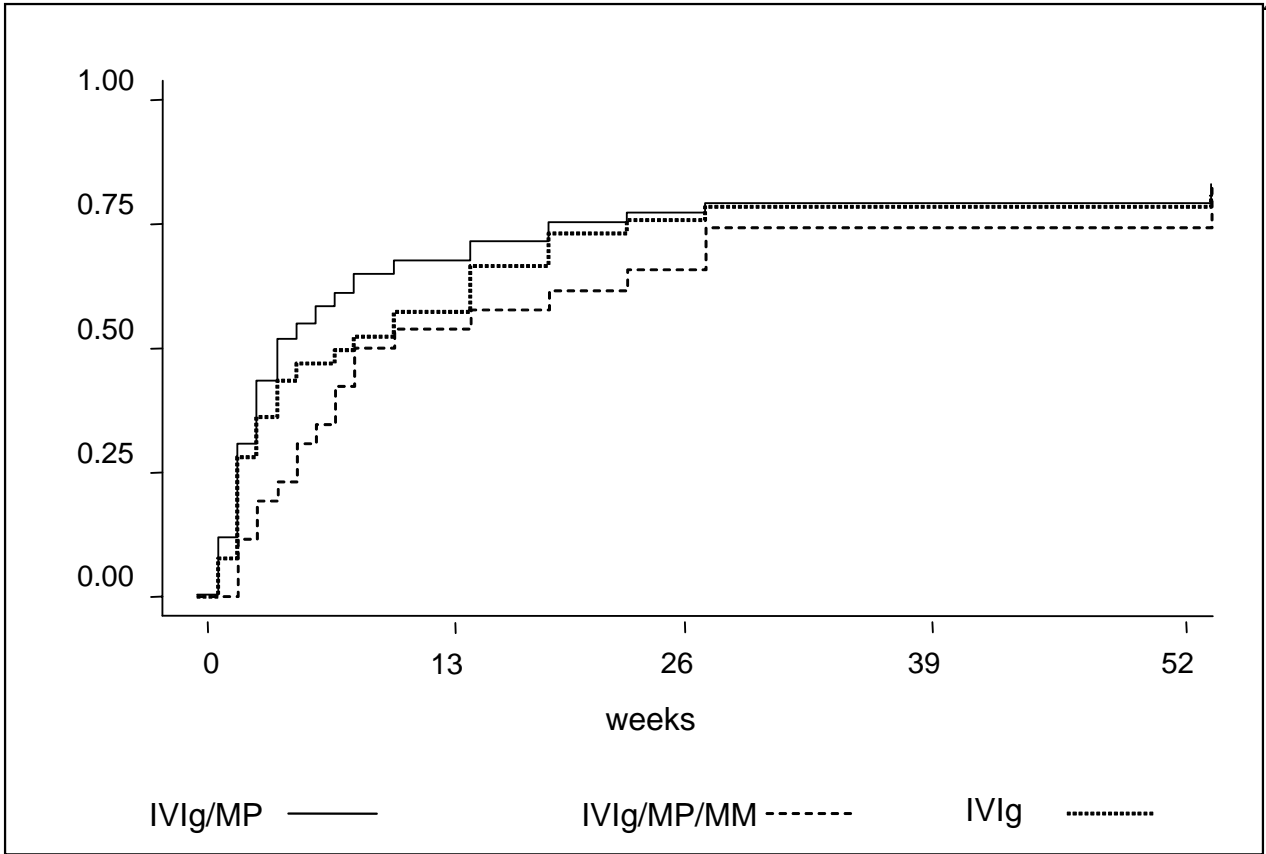


Figure 1b Kaplan-Meier survival estimates for the proportion of patients that has improved to independent walking (GBS disability ≤ 2) during 52 weeks of follow-up

Table 2 Secondary endpoints

Endpoint	IVIg/MP/MM (n=26)	IVIg/MP² (n=112)	P-value
Percentage of patients able to walk independently after 8 weeks (GBS disability score ≤ 2)	12 (52%)	78 (70%)	P=0.12
Median time to independent walking (GBS disability score ≤ 2) *	70 days	28 days	P=0.22
Median time to improve ≥ 1 grade on GBS disability scale *	28 days	21 days	P=0.08
Improvement ≥ 1 grade on GBS disability scale after 6 months (%)	21 (84%)	90 (93%)	P=0.17
Need for artificial respiration	4 (15%)	22 (21%)	P=0.5

* see also figure 1a and 1b (website JNNP).

Table 3 Adverse events

Event	IVIg + MP + MM			IVIg + MP
	0 - 6 weeks (n=26)	7-26 weeks (n=26)	Overall (n=26)	overall (n=112)
Urinary tract infection	19%	4%	23%	18%
Respiratory tract infection	15%	4%	19%	32%
Glucose > 10 mmol/l	19%	0%	19%	21%
Haematological complication*	8%	0%	8%	n. a.
Renal failure	4%	0%	4%	3%
Deep venous thrombosis	0%	8%	8%	5%
Pulmonary embolism	0%	4%	4%	4%
Delirium	0%	4%	4%	5%
Gastro-intestinal bleeding	0%	4%	4%	3%

* leucopenia or anaemia