

Heteroduplex DNA Mismatch Repair System of *Streptococcus pneumoniae*: Cloning and Expression of the *hexA* Gene

T. S. BALGANESH AND SANFORD A. LACKS*

Biology Department, Brookhaven National Laboratory, Upton, New York 11973

Received 28 January 1985/Accepted 26 March 1985

Mutations affecting heteroduplex DNA mismatch repair in *Streptococcus pneumoniae* were localized in two genes, *hexA* and *hexB*, by fractionation of restriction fragments carrying mutant alleles. A fragment containing the *hexA4* allele was cloned in the *S. pneumoniae* cloning system, and the *hexA*⁺ allele was introduced into the recombinant plasmid by chromosomal facilitation of plasmid transfer. Subcloning localized the functional *hexA* gene to a 3.5-kilobase segment of the cloned pneumococcal DNA. The product of this gene was shown in *Bacillus subtilis* minicells to be a polypeptide with an *M_r* of 86,000. Two mutant alleles of *hexA* showed partial expression of the repair system when present in multicopy plasmids. A model for mismatch repair, which depends on the interaction of two protein components to recognize the mismatched base pair and excise a segment of DNA between strand breaks surrounding the mismatch, is proposed.

As a consequence of the mechanism of DNA uptake in the transformation of *Streptococcus pneumoniae*, single-strand donor DNA segments several kilobases (kb) in length enter the cell (15, 21, 29) and are integrated into the recipient DNA to give a heteroduplex product (11). Evidence for a mismatch repair system in *S. pneumoniae* that acts on such heteroduplex DNA initially came from differences observed in transformation frequencies for markers corresponding to different mutations within the same gene (9, 16, 20). Markers representing transition mutations were integrated much less efficiently than those representing transversions or small deletions (2, 3, 17, 22). The low efficiency appeared to result from exclusion of the donor marker and an adjacent segment of donor DNA several kb long (17). It was proposed that a repair system recognizes the mismatch and excises a portion of one strand in the heteroduplex, which is then restored by repair replication (8). Inasmuch as only the donor marker was eliminated (17), and the repair occurred early in the integration process (12, 31), it was suggested that the target for repair is the incompletely integrated donor segment in the heteroduplex (5, 14, 22).

The isolation of *hex* mutant cells, in which all single-site markers were transformed at high efficiency, supported the hypothesis of a mismatch repair system in normal cells (18). Thus, in a *Hex*⁺ recipient, markers that produce mismatches not recognized by the repair system give high transformation efficiency, whereas those that produce recognizable mismatches give low transformation efficiency because the donor marker is "corrected," that is, eliminated, most of the time. In a *Hex*⁻ recipient, no mismatches are corrected, so all markers give high transformation efficiency. Furthermore, *Hex*⁻ cells showed high rates of spontaneous mutation (22, 33). This indicated that the *hex* repair system also corrected potential mutational mismatches in the replication of chromosomal DNA. In the present work, six independently isolated *hex* mutations were analyzed with respect to their location in the genome. They were found to fall into at least two different genetic loci.

One of the *hex*⁺ genes and three of its mutant alleles were cloned in a pneumococcal cloning system. Phenotypic expression of the cloned genes was examined in *S. pneumo-*

niae, and the nature of their gene products was analyzed by transfer of the recombinant plasmids to *Bacillus subtilis* minicells. On the basis of these and prior results, a tentative model for the mechanism of heteroduplex DNA base mismatch repair was formulated.

MATERIALS AND METHODS

Bacterial strains and plasmids. Strains of *S. pneumoniae* and their relevant mutant genotype were 175 (*malM567*), 193 (*malDXMP581*), 533 (*nov str sul-d*), 590 (*hex-3 malM515*), 742 (*amiA9 nov str sul-d*), 767 (*hex-1 malDXMP581*), 777 (*hex-Rx malDXMP581*), 782 (*hex-4 malDXMP581 str*), 793 (*hex-6 amiA9 malDXMP581*), and 794 (*hex-7 amiA9 malDXMP581*). Markers that transform with high efficiency are designated HE markers; those that transform with low efficiency are designated LE markers. Plasmid vectors were pLS101, which conferred Mal⁺ or Tc^r (1); pLS70, partial cleavage of which by *Pst*I gave the pMV158 vector that confers Tc^r (32); and pLS69, of which a Tc^r-conferring fragment was used (1).

Growth media and transformation procedures. Media for culture growth and plating (17), procedures for transformation (1), and conditions for selection of Mal⁺, Sul^r, Str^r, Nov^r, Ami^r, and Tc^r transformants were described (1, 35).

Tests for *Hex*⁻ transforming activity and *Hex* phenotype. *Hex*⁻ transforming activity in restriction fragments or plasmids extracted from gels was tested by first transforming cultures of strain 175 (*hex*⁺) with the DNA. The cultures were then treated with UV-irradiated DNA from strain 533 (*nov*, LE marker). The DNA was irradiated in solution at 40 µg/ml in a layer 0.5 mm deep with a fluence of 480 J/m² from a germicidal lamp. Nov^r transformants were grown up in bulk culture and transformed with UV-irradiated DNA from strain 742 (*amiA9*, LE marker; *sul-d*, HE marker). The ratio of Ami^r to Sul^r (LE/HE) transformants measured the extent of the original *Hex*⁻ transformation.

Mal⁺ or Tc^r clones to which recombinant plasmids were transferred were tested for their *Hex* phenotype by transformation with UV-irradiated DNA from strain 533 (*nov*, LE marker; *str*, HE marker). The LE/HE ratio indicated the phenotype.

Preparation and manipulation of DNA. Chromosomal DNA (17), purified plasmids (6), and crude plasmid extracts (1)

* Corresponding author.

were prepared as described. Enzymes were from commercial sources and used according to the recommendations of the supplier. Restriction fragments were separated by electrophoresis in 0.8% low-melting-point agarose and extracted from gel segments melted at 65°C and cooled to 37°C. The mixtures were treated with Tris-buffered phenol first at 37°C, then at 20°C, and the DNA was precipitated with ethanol. Ligation of fragments was carried out as described (32). Plasmids in crude extracts of transformants were analyzed by electrophoresis in 1% agarose; monomer forms of the plasmids were eluted from gel segments as described (1) and tested for Hex⁻ transforming activity.

Analysis of proteins encoded by plasmids in minicells of *Bacillus subtilis*. Recombinant plasmids were transferred first to strain MB11 (*lys-3 metB10 hisH2*) and then to strain CU403 (*divIVB1 thyA thyB metB*) by transformation to Tc^r (10). Procedures for the preparation of minicells, labeling of protein with [³⁵S]methionine, analysis of extracts in polyacrylamide gradient gels, and autoradiography have been described (10).

RESULTS

Localization of *hex* genes on chromosomal restriction fragments. Six independently isolated *hex* mutations conferred similar phenotypes of high-efficiency transformation for all single-site markers (18) and elevated spontaneous mutation frequency (22, 33). To determine whether one or more genes were affected by these mutations, we sought to assign the various mutant alleles to chromosomal restriction fragments of a particular size. It was possible to assay Hex⁻ transforming activity by a modification of a method used to transfer *hex* alleles (33). A Hex⁺ recipient population is treated first with DNA carrying the Hex⁻ marker. The extent of Hex⁻ transformation is determined in a subsequent two-step treatment with UV-irradiated tester DNA carrying both an LE and an HE marker. The UV treatment decreases the efficiency of the LE marker (16, 24), so that in the absence of Hex⁻ transforming activity in the initial step the LE/HE ratio is ca. 0.01. The presence of Hex⁻ transforming activity is detected by ratios significantly higher than this, which, depending on the extent of the initial Hex⁻ transformation, can approach 1.0.

To localize the *hex* alleles on restriction fragments, chromosomal DNA from *hex-1* and *hex-4* strains was treated with *Bam*HI, *Eco*RI, and *Hpa*II; DNA from the *hex-Rx* strain was treated with the two latter enzymes. The cleaved DNA was fractionated by agarose gel electrophoresis, fragments corresponding to various size classes were extracted from segments of the gel, and the extracted DNA was tested for its ability to transfer the *hex* mutation to a Hex⁺ recipient. The results are shown in Table 1. The *hex-4* mutation was located on a *Bam*HI fragment 6 to 8 kb in size, whereas *hex-1* was found on a much larger *Bam*HI fragment. Conversely, with *Eco*RI the peak of *hex-4* activity migrated more slowly than that of *hex-1*. With *Hpa*II, *hex-1* appeared on a fragment 6 to 8 kb in size, whereas no activity was observed for *hex-4* in any fraction, including those smaller than shown in Table 1. This absence of activity indicates that *Hpa*II cuts very close to the *hex-4* mutation (23). The *hex-Rx* allele behaved rather similarly to *hex-1*, inasmuch as the slight differences observed may be due to experimental variation in migration of borderline fragments.

It can be concluded that the *hex* system involves at least two genes that are not closely linked in the genome, neither of which have vital functions. One gene, represented by

hex-4, will be called *hexA*; the other, represented by *hex-1* and possibly *hex-Rx*, will be called *hexB*.

Cloning of the *hexA4* gene. The gene with the *hex-4* mutation was cloned in the vector plasmid pLS101 (1), which carries *tet* and *malM* gene markers. The 6- to 8-kb fraction of *Bam*HI-cut *hex-4* chromosomal DNA was ligated with *Bcl*I-cut pLS101 and counter-cut with *Bcl*I to destroy reconstituted vector, and the ligation mixture was used to transform strain 767 to Mal⁺. Crude plasmid extracts were prepared from 15 Mal⁺ transformants and analyzed by gel electrophoresis. They all contained recombinant plasmids with inserts in the range of 6 to 8 kb. When the plasmids were eluted from the gel and tested for Hex⁻ transforming activity, two of them showed activity. One of these was taken as the *hex-4* recombinant plasmid and called pLS120. The rather high yield of *hex-4* recombinant plasmids (2 of 15) may be attributable to counter-cutting with *Bcl*I, which would have destroyed plasmids with inserts containing *Bcl*I sites. Plasmid pLS120 contains a 6.7-kb chromosomal insert that encompasses a functional *hexA* gene, as shown below. Its restriction map is presented in Fig. 1.

Introduction of the *hexA*⁺ allele into pLS120. The wild-type allele was introduced into the *hexA4*-containing plasmid in place of the mutant allele by the process of chromosomal facilitation of plasmid transfer (26), in which chromosomal markers frequently enter the plasmid molecule during its establishment. The *hex*⁺ strain 193 was transformed with pLS120, and the plasmids from 19 Mal⁺ transformants were tested for Hex⁻ transforming activity. Of the 19, 2 carried the original *hexA4* allele; their plasmids gave LE/HE ratios in the test of 0.42 and 0.50. However, 17 of the 19 appeared to have plasmids that incorporated the *hexA*⁺ allele from the chromosome; they gave LE/HE ratios of 0.03 to 0.07 in the test. Such high frequencies of chromosomal marker incorporation during plasmid transfer (i.e., 17 of 19 or 89%) were previously found for *malM* markers that were centrally located in the plasmid insert homologous to the chromosome (26). One of the *hexA*⁺ plasmids was designated pLS121. As shown below, this plasmid confers a Hex⁺ phenotype to *hex-4* but not to *hex-1* cells.

Expression of cloned *hexA* alleles. The ability of the *hexA* genes in plasmids pLS120 and pLS121 to complement various *hex* mutations in the chromosome is shown in Table 2. In all cases (except for *hex-3*, in which a Tc^r-conferring plasmid was used) the recipient strain contained a large *mal* deletion in its chromosome, and transfer of the plasmid was accom-

TABLE 1. Hex⁻ transforming activity in restriction fragments of chromosomal DNA containing various *hex* mutations

DNA fragment size ^a (kb)	Ratio of LE/HE transformants in test ^b with DNA cut by:							
	<i>Bam</i> HI		<i>Eco</i> RI			<i>Hpa</i> II		
	<i>hex-1</i>	<i>hex-4</i>	<i>hex-Rx</i>	<i>hex-1</i>	<i>hex-4</i>	<i>hex-Rx</i>	<i>hex-1</i>	<i>hex-4</i>
12-30	0.15	0.01	0.20	0.18	0.14	0.06	0.03	0.01
8-12	0.09	0.01	0.12	0.41	0.07	0.09	0.04	0.01
6-8	0.03	0.17	0.04	0.05	0.03	0.16	0.37	0.01
4.5-6	0.01	0.01	0.03	0.03	0.01	0.15	0.04	0.01
3.5-4.5	0.02	0.04	0.01	NT ^c	0.03	0.03	0.04	0.01

^a *hex*⁻ DNA was prepared from *S. pneumoniae* strains 767 (*hex-1*), 782 (*hex-4*), and 777 (*hex-Rx*) and digested with the indicated restriction enzymes. The DNA fragments were separated by electrophoresis in agarose and extracted from the gel.

^b *hex*⁺ cells of strain 175 were first treated with *hex*⁻ DNA fragments and then transformed with UV-irradiated *nov* (LE) DNA; the *nov* population was grown and tested with UV-irradiated *amiA9* (LE), *sul-d* (HE) DNA. Boldface values were significantly higher than the background.

^c NT, Not tested.

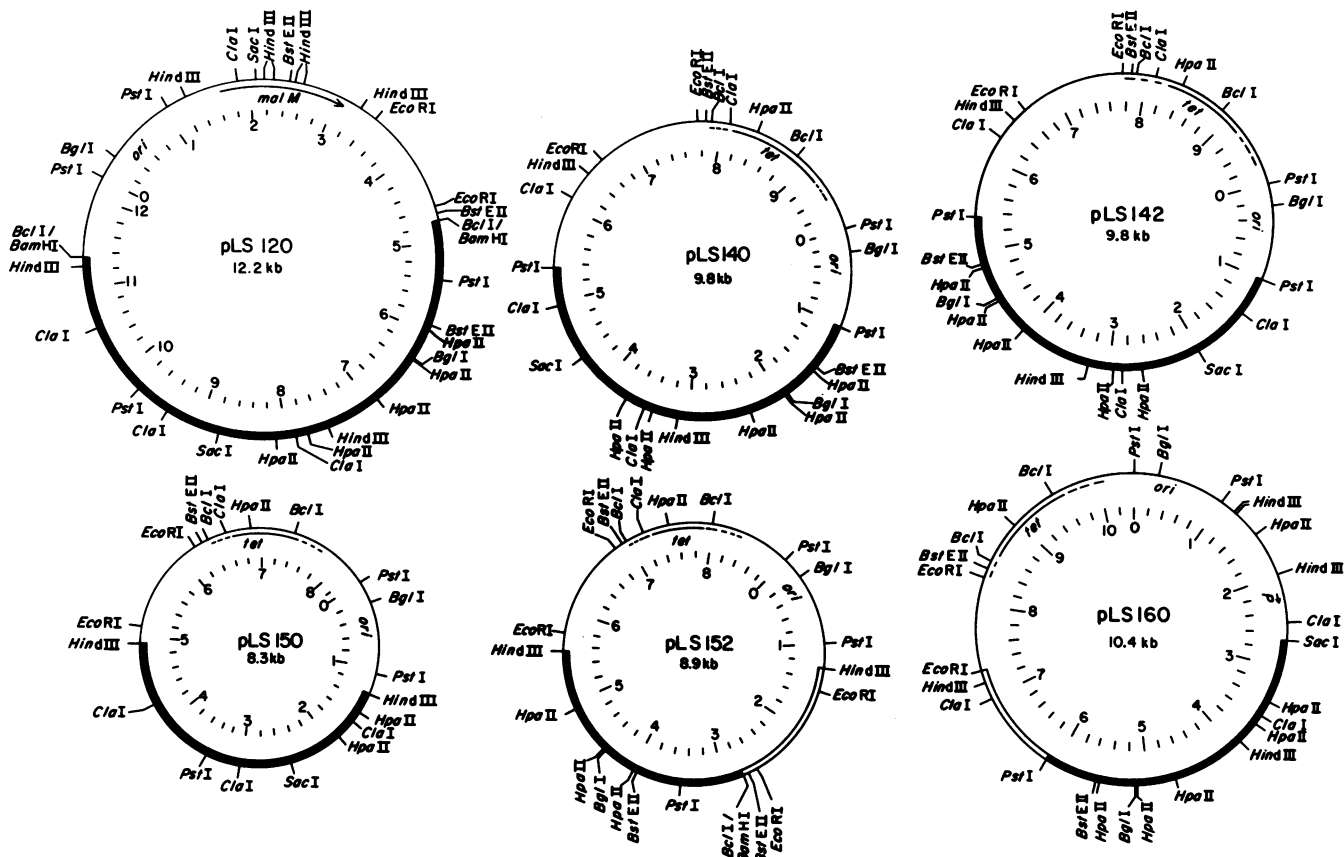


FIG. 1. Maps of recombinant plasmids used to localize the *hexA* gene. Thin line, vector portion; solid bar, chromosomal insert; open bar, subcloned vector segment. Vector genes: *malM*, amyломaltase; *tet*, tetracycline resistance; *ori*, presumed origin of replication; *P*, promoter for *malM* transcription. Arrows indicate the direction of transcription. All plasmids shown except pLS150 and pLS152 expressed *hexA4* gene function.

plished by selecting for Mal⁺ clones. Individual clones were tested for their Hex phenotype by transformation with UV-irradiated DNA containing *nov* (LE) and *str* (HE) markers. The chromosomal mutant strains gave LE/HE ratios of ca. 1.0, typical of the Hex⁻ phenotype. Strains with the Hex⁺ phenotype typically gave ratios of ca. 0.003. When the *hexA4* plasmid pLS120 was introduced into a *hexA4* recipi-

ent, however, none of the clones were completely Hex⁻. Rather, they were all partially Hex⁺, with LE/HE ratios in the range of 0.2 to 0.3. This weak Hex⁺ phenotype may reflect the multicopy nature of the plasmid. Estimates of copy number for similar plasmids range from 10 to 30 (25). Presumably, *hexA4* is a leaky mutation, and its residual activity becomes apparent as a result of increased gene dosage with the multicopy plasmid. If this is correct, then *hexA4* makes a poorly functional product, the activity of which is detectable only when it is made in large amounts. So the function of the *hexA* product in the mismatch repair system would appear to depend on its concentration in the cell.

The ability of the *hexA*⁺ allele carried by pLS121 to complement the *hexA4* allele in the recipient chromosome to restore the full Hex⁺ phenotype is evident from the second line of Table 2. Of the 36 tested Mal⁺ transformants, 4 were Hex⁺. The other 32, that is 88%, apparently resulted from chromosomal facilitation in which the plasmid took up the *hexA4* allele from the chromosome during its establishment. They showed the partial Hex⁺ phenotype conferred by the multicopy *hexA4* plasmid. Plasmids were isolated from eight of these clones, and they all exhibited Hex⁻ transforming activity. The high levels observed for recipient marker introduction by chromosomal facilitation suggest that the *hexA4* mutation is located at least 1.5 kb from the vector border. Previous studies of *mal* markers in pLS70 showed that markers at this distance were introduced at frequencies

TABLE 2. Complementation of *hex* alleles

Recipient strain	Recipient chromosome allele	Donor plasmid	Donor plasmid allele	Total no. of clones tested	No. of clones among plasmid-containing transformants tested showing phenotype ^a :		
					Hex ⁻	Hex ⁺	Partial Hex ⁺
782	<i>hexA4</i>	pLS120	<i>hexA4</i>	9	0	0	9 ^b
782	<i>hexA4</i>	pLS121	<i>hexA</i> ⁺	36	0	4	32 ^b
793	<i>hex-6</i>	pLS121	<i>hexA</i> ⁺	15	13	2	0
794	<i>hex-7</i>	pLS121	<i>hexA</i> ⁺	19	0	2	17 ^c
767	<i>hex-1</i>	pLS121	<i>hexA</i> ⁺	22	22	0	0
777	<i>hex-Rx</i>	pLS121	<i>hexA</i> ⁺	19	19	0	0
590	<i>hex-3</i>	pLS141	<i>hexA</i> ⁺	18	18	0	0

^a Phenotype in terms of LE/HE (Nov⁺/Str^r) range with UV-irradiated donor DNA: Hex⁻, 0.8 to 1.0; Hex⁺, 0.003 to 0.008; partial Hex⁺ as indicated below.

^b LE/HE range, 0.2 to 0.3.

^c LE/HE range, 0.5 to 0.7.

as high as 86%, whereas those closer to the border entered less frequently (26).

Recipients with *hex-6* in their chromosome were also complemented by the *hexA*⁺ plasmid (Table 2). In this case 2 of 15 transformants tested were fully Hex⁺, which means that *hex-6* is an allele of the *hexA* gene. The other 13, or 87%, which resulted from introduction of the chromosomal allele into the plasmid, were completely Hex⁻. It thus appears that the *hexA6* mutation is not leaky like *hexA4*. The *hex-7* recipient behaved similarly to *hexA4*, except that it gave a partial Hex⁺ phenotype closer to Hex⁻, so the *hexA7* mutation seems to be less leaky than *hexA4*. None of the other mutations, *hex-1*, *hex-Rx*, or *hex-3*, were complemented by a *hexA*⁺ plasmid. They must be alleles of one or more *hex* genes other than *hexA*. This is consistent with the results of the analysis of restriction fragments.

Localization of the *hexA* gene by subcloning. The 4.4-kb *PstI* fragment contained entirely within the *hexA4*-containing chromosomal segment of pLS120 was inserted in both directions into the *PstI* cloning site of the vector pMV158 (32) to give pLS140 and pLS142 (Fig. 1). These plasmids also conferred the partial Hex⁺ phenotype of multicopy *hexA4*. When pLS140 was transferred to the *hexA*⁺ strain 175, it picked up the *hexA*⁺ allele by chromosomal facilitation to give pLS141, which conferred the full Hex⁺ phenotype. Plasmid pLS160 was constructed by inserting the 4.7-kb *SacI-EcoRI* fragment of pLS142 into the vector pLS69 from which a *SacI-EcoRI* segment was removed. Cells containing pLS160 also showed the partial Hex⁺ phenotype indicative of a functional *hexA4* gene in the plasmid.

Several subcloned fragments did not give expression of the *hexA4* allele. Plasmid pLS139 (data not shown) was obtained by removing the *ClaI* segments at 3.5 to 6.1 kb from pLS140 (Fig. 1). Plasmids pLS150 and pLS152 were formed by inserting *HindIII* fragments from pLS120, positioned at 7.5 to 11.2 kb and 3.3 to 7.5 kb on the map shown in Fig. 1, respectively, into the *HindIII* cloning site of the pLS101 vector. None of these plasmids conferred the partial Hex⁺ phenotype of cells with a functional *hexA4* plasmid. Thus, the *hexA* gene lies entirely within the 3.4-kb segment bordered by the *SacI* and *PstI* sites, and it includes the *ClaI* and *HindIII* sites located within that segment.

Identification of *hexA* protein in minicells. Plasmids pLS140, pLS141, pLS142, and pLS160 were transferred to the minicell-producing strain of *B. subtilis*. Proteins produced by minicells containing these plasmids were labeled with [³⁵S]methionine and analyzed by electrophoresis in polyacrylamide gradient gels in the presence of sodium dodecyl sulfate. The pattern of labeled proteins resulting from the *hexA*-carrying plasmids was compared with that obtained from minicells containing pLS1 and pLS69 (Fig. 2). Plasmid pLS1 contains all but a 1.1-kb *EcoRI* fragment of the vector pMV158; pLS69 contains all of pMV158 and, in addition, a pneumococcal *mal* insert, which encodes the amyломaltase polypeptide (32). All of the plasmids gave labeled proteins with apparent *M_r*s of 39,000, 59,000, 68,000, and 91,000, which are presumably either vector products (10) or minicell host proteins for which mRNA was stabilized by the presence of the plasmid; they were absent from labeled minicells that contain no plasmid (10). These bands were all seen with the vector pLS1 (Fig. 2, lane 2). Minicells containing pLS69 also produced an intensely labeled amyломaltase band at the position of *M_r* 70,000 (Fig. 2, lane 5). The amyломaltase polypeptide migrates more slowly than expected from its *M_r* of 58,000 (22).

Only one new polypeptide band was seen in minicells with plasmids carrying the *hexA* gene (Fig. 2, lanes 1, 3, 4, and 6). This band corresponds to an *M_r* of 86,000. Its intensity varied in the different minicell preparations, but it was present at the same position with both *hexA*⁺ (Fig. 2, lane 1) and *hexA4* plasmids. Inasmuch as the *hexA* gene lies within the 3.4-kb segment from *SacI* to *PstI* in pLS160 and is interrupted by the *HindIII* site in that segment, the *M_r*-86,000 protein, which requires 2.4 kb of coding capacity, is most likely the product of the *hexA* gene. This conclusion is consistent with observations made above that the *hexA4* mutation is located near a *HpaII* site and at least 1.5 kb from the vector-insert border in pLS120.

DISCUSSION

Our restriction fragment analysis of *hex*⁻ transforming activity indicated that at least two genes function in the mismatch repair system. This conclusion was corroborated by the cloning of one of the genes and its demonstrated complementation of one set but not another set of *hex* mutations. Using a different approach, Claverys et al. (4) recently presented evidence also showing more than one gene in the system. By insertional mutagenesis with a plasmid from *Escherichia coli*, they obtained *hex* mutants, and they were able to clone a small portion of one gene in *E. coli* to use as a probe for hybridization analysis. Southern blotting with chromosomal DNA gave a partial restriction map for that gene, which they called *hexA*. Their map corresponds to our map of the gene in pLS120 from the *PstI* site at 5.4 kb to the *HindIII* site at 11.2 kb, which we also called *hexA*. Some of their insertion mutations did not alter the *BglII* pattern for *hexA* and were thus taken to have occurred in another *hex* locus.

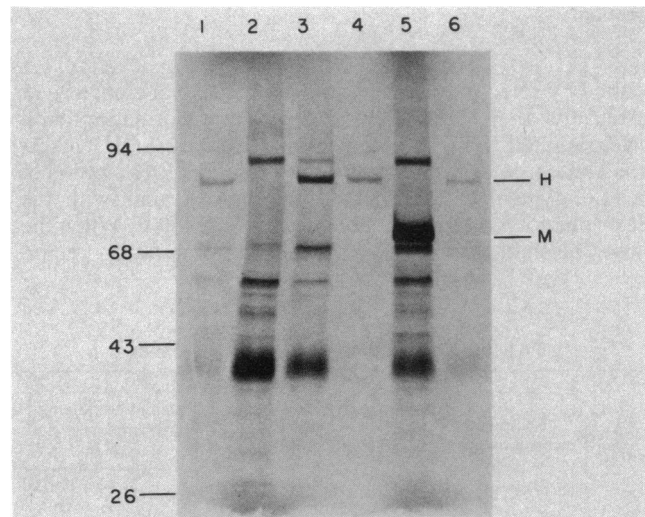


FIG. 2. Synthesis of *hexA* protein product in minicells of *B. subtilis*. Minicells of strain CU403 carrying various plasmids were labeled with [³⁵S]methionine. Extracts containing ca. 5 μ g of protein were applied to polyacrylamide gels, which after electrophoresis in the presence of sodium dodecyl sulfate were dried and subjected to autoradiography. Plasmids in minicells: pLS141 (*hexA*⁺) (lane 1); pLS1 (vector) (lane 2); pLS140 (*hexA4*) (lane 3); pLS142 (*hexA4*) (lane 4); pLS69 (vector with *malM*) (lane 5); pLS160 (*hexA4*) (lane 6). At the left is shown the migration of standard proteins, rabbit phosphorylase, bovine albumin, chicken ovalbumin, and bovine chymotrypsinogen, with *M_r*s ($\times 10^3$) indicated. At the right are shown the positions of amyломaltase (M) and *hexA* protein (H).

The finding of two unlinked genes in the Hex system implies the existence of two biochemical functions; one could be recognition of the mismatch and the other could be excision of the target strand segment. The cloning of *hexA* and, eventually, of *hexB* should help determine these functions. The mutant *hex* alleles investigated here were produced by mutagenesis with *N*-methyl-*N'*-nitro-*N*-nitrosoguanidine (18) and, therefore, probably resulted from base-change mutations. It is not surprising, then, that *hexA4* and *hexA7* appear to be leaky mutations. The partial expression of these alleles only in multicopy dose shows that higher concentrations of a *hexA* product can overcome its qualitative defect. This finding restricts the possible modes of interaction between the *hexA* and *hexB* components of the system.

A number of prior observations must be included in a model for Hex action. The extent of the excluded donor strand corresponds to the length that would normally be integrated and includes material on both sides of the LE marker (17). It has been shown that this donor material is physically degraded (28). Recognition of the target strand for elimination appears to depend on the presence of strand breaks (5, 14, 22). In transformation the initial integration product is a heteroduplex in which the donor strand segment is not yet covalently joined (7). Mismatch repair, in fact, was shown to occur very early in the integration process (12, 31). In DNA replication the nascent strand would be interrupted at the ends of Okazaki pieces produced either by the process of lagging strand synthesis or by the removal of incorporated uracil residues (34). Ligation of the target strand before mismatch recognition in either transformation or replication may limit the amount of correction. Enhancement of Hex system action by UV irradiation of donor DNA (16, 24) presumably results from the introduction of new breaks by excision repair of the UV lesions.

A tentative model for Hex mismatch correction is shown in Fig. 3. Some features of the model were suggested by Guild and Shoemaker (14). The two *hex* genes are designated *hexX* and *hexY* because it is not yet possible to specify the biochemical functions of *hexA* and *hexB*. The *X* product would monitor DNA, perhaps after entry at the 5' end of the interrupted segment. It may remain anchored at this point and reel in the DNA (14), or it may move along the DNA (Fig. 3). When it encounters a recognizable mismatch, a conformational change is triggered in the *X* protein. It continues to move in the same direction until it encounters the 3' end of the segment. At that point the *X* product interacts with the complex of *X* and DNA, and it digests the interrupted segment in the reverse direction. A defective *X* product could fail to enter the DNA or fail to recognize the mismatch when passing over it. Increasing its amount would increase the number of passes and allow limited Hex action. If the *Y* product were defective in its association with the triggered *X*-DNA complex, increasing its amount would also partially restore, by mass action, Hex system activity. On completion of strand segment excision, the DNA would be restored by repair replication of the gap.

Mismatch repair has been observed with heteroduplex lambda phage DNA in *E. coli* (30, 36). In this species the repair has also been implicated in mutation avoidance, since it is blocked by mutations in the genes *mutL* and *mutH*, which confer a mutator phenotype. These genes may be analogous to *hexA* and *hexB* in *S. pneumoniae*. Mutations in the *dam* gene, which methylates GATC sites in the DNA of *E. coli* (19), confer a partial mutator phenotype that is ca. 10% of the level of *mutL* and *mutH* (13, 27), and it has been

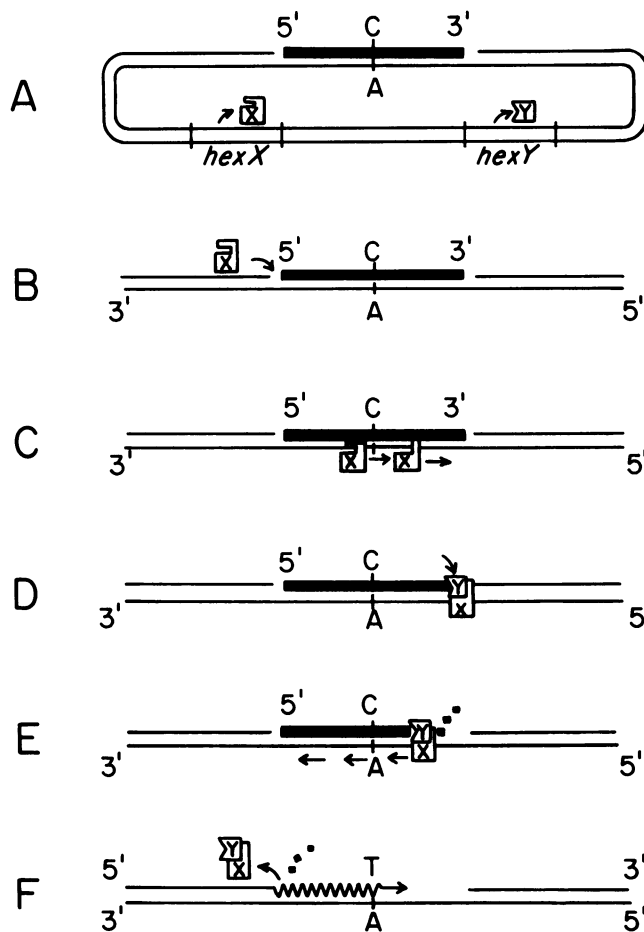


FIG. 3. Model for *hex* mismatch repair. (A) Integration product with cytosine-adenine mismatch before covalent joining of donor segment. (B) Entry of *hex* system monitor at the 5' break. (C) Recognition of mismatch triggers monitor. (D) Monitor halts at 3' break and binds exonuclease. (E) Exonuclease acts in reverse direction. (F) Completion of *hex* action and replication repair of gap. Thin line, chromosomal DNA; solid bar, donor DNA; sawtooth line, repair replication on chromosomal template. *X* and *Y*, monitor and exonuclease, are the hypothetical products of *hexX* and *hexY* genes.

proposed that the absence of methylation normally directs repair to the unmethylated strand (13, 30). However, methylation-related repair might depend for strand targeting on strand breaks produced at unmethylated sites in *E. coli* DNA (22). No methylation is implicated in mismatch repair in *S. pneumoniae*. In transformation both strands of the heteroduplex represent mature DNA and would be fully methylated, so methylation deficiency could not serve to target donor DNA. Accordingly, a unifying perspective would predict that heteroduplex mismatch repair in general depends on strand interruptions in the targeted DNA.

ACKNOWLEDGMENTS

This research was conducted at Brookhaven National Laboratory under the auspices of the U.S. Department of Energy. It was supported by Public Health Service grant AI14485 from the National Institutes of Health.

LITERATURE CITED

- Balganesh, T. S., and S. A. Lacks. 1984. Plasmid vector for cloning in *Streptococcus pneumoniae* and strategies for enrich-

- ment for recombinant plasmids. *Gene* **29**:221-230.
2. Claverys, J. P., V. Mejean, A. M. Gasc, F. Galibert, and A. M. Sicard. 1981. Base specificity of mismatch repair in *Streptococcus pneumoniae*. *Nucleic Acids Res.* **9**:2267-2280.
 3. Claverys, J. P., V. Mejean, A. M. Gasc, and A. M. Sicard. 1983. Mismatch repair in *Streptococcus pneumoniae*: relationship between base mismatches and transformation efficiencies. *Proc. Natl. Acad. Sci. U.S.A.* **80**:5956-5960.
 4. Claverys, J. P., H. Prats, H. Vasseghi, and M. Gherardi. 1984. Identification of *Streptococcus pneumoniae* mismatch repair genes by an additive transformation approach. *Mol. Gen. Genet.* **196**:91-96.
 5. Claverys, J. P., M. Roger, and A. M. Sicard. 1980. Excision and repair of mismatched base pairs in transformation of *Streptococcus pneumoniae*. *Mol. Gen. Genet.* **178**:191-201.
 6. Currier, T. C., and E. W. Nester. 1976. Isolation of covalently closed circular DNA of high molecular weight from bacteria. *Anal. Biochem.* **76**:431-441.
 7. Dubnau, D., and C. Cirigliano. 1973. Fate of transforming DNA following uptake by competent *Bacillus subtilis*. VI. Non-covalent association of donor and recipient DNA. *Mol. Gen. Genet.* **120**:101-106.
 8. Ephrussi-Taylor, H., and T. C. Gray. 1966. Genetic studies of recombining DNA in pneumococcal transformation. *J. Gen. Physiol.* **49**:211-231.
 9. Ephrussi-Taylor, H., A. M. Sicard, and R. Kamen. 1965. Genetic recombination in DNA-induced transformation of pneumococcus. I. The problem of relative efficiency of transforming factors. *Genetics* **51**:455-475.
 10. Espinosa, M., P. Lopez, and S. A. Lacks. 1984. Transfer and expression of recombinant plasmids carrying pneumococcal *mal* genes in *Bacillus subtilis*. *Gene* **28**:301-310.
 11. Fox, M. S., and M. K. Allen. 1964. On the mechanism of deoxyribonucleate integration in pneumococcal transformation. *Proc. Natl. Acad. Sci. U.S.A.* **52**:412-419.
 12. Ghei, O. K., and S. A. Lacks. 1967. Recovery of donor deoxyribonucleic acid marker activity from eclipse in pneumococcal transformation. *J. Bacteriol.* **93**:816-829.
 13. Glickman, B. W., and M. Radman. 1980. *Escherichia coli* mutator mutants deficient in methylation-instructed DNA mismatch correction. *Proc. Natl. Acad. Sci. U.S.A.* **77**:1063-1067.
 14. Guild, W. R., and N. B. Shoemaker. 1976. Mismatch correction in pneumococcal transformation: donor length and *hex*-dependent marker efficiency. *J. Bacteriol.* **125**:125-135.
 15. Lacks, S. 1962. Molecular fate of DNA in genetic transformation of pneumococcus. *J. Mol. Biol.* **5**:119-131.
 16. Lacks, S. 1966. Genetic recombination in pneumococcus, p. 159-164. In M. Kohoutova and J. Hubacek (ed.), *The physiology of gene and mutation expression*. Academia, Prague.
 17. Lacks, S. 1966. Integration efficiency and genetic recombination in pneumococcal transformation. *Genetics* **53**:207-235.
 18. Lacks, S. 1970. Mutants of *Diplococcus pneumoniae* that lack deoxyribonucleases and other activities possibly pertinent to genetic transformation. *J. Bacteriol.* **101**:373-383.
 19. Lacks, S., and B. Greenberg. 1977. Complementary specificity of restriction endonucleases of *Diplococcus pneumoniae* with respect to DNA methylation. *J. Mol. Biol.* **114**:153-168.
 20. Lacks, S., and R. D. Hotchkiss. 1960. A study of the genetic material determining an enzyme activity in pneumococcus. *Biochim. Biophys. Acta* **39**:508-518.
 21. Lacks, S. A. 1977. Binding and entry of DNA in bacterial transformation, p. 179-232. In J. Reissig (ed.), *Microbial interactions*. Chapman and Hall, London.
 22. Lacks, S. A., J. J. Dunn, and B. Greenberg. 1982. Identification of base mismatches recognized by the heteroduplex-DNA-repair system of *Streptococcus pneumoniae*. *Cell* **31**:327-336.
 23. Lataste, H., J. P. Claverys, and A. M. Sicard. 1981. Relation between the transforming activity of a marker and its proximity to the end of the DNA particle. *Mol. Gen. Genet.* **183**:199-201.
 24. Litman, R. M. 1961. Genetic and chemical alterations in the transforming DNA of pneumococcus caused by ultraviolet light and by nitrous acid. *J. Chim. Phys.* **58**:997-1003.
 25. Lopez, P., M. Espinosa, and S. A. Lacks. 1984. Physical structure and genetic expression of the sulfonamide-resistance plasmid pLS80 and its derivatives in *Streptococcus pneumoniae* and *Bacillus subtilis*. *Mol. Gen. Genet.* **195**:402-410.
 26. Lopez, P., M. Espinosa, D. L. Stassi, and S. A. Lacks. 1982. Facilitation of plasmid transfer in *Streptococcus pneumoniae* by chromosomal homology. *J. Bacteriol.* **150**:692-701.
 27. Marinus, M. G., and N. R. Morris. 1974. Biological function for 6-methyladenine residues in the DNA of *Escherichia coli* K12. *J. Mol. Biol.* **85**:309-322.
 28. Mejean, V., and J. P. Claverys. 1984. Effect of mismatched bases on the fate of donor DNA in transformation of *Streptococcus pneumoniae*. *Mol. Gen. Genet.* **197**:467-471.
 29. Morrison, D. A., and W. R. Guild. 1972. Transformation and deoxyribonucleic acid size: extent of degradation on entry varies with size of donor. *J. Bacteriol.* **112**:1157-1168.
 30. Pukkila, P. J., J. Peterson, G. Herman, P. Modrich, and M. Meselson. 1983. Effects of high levels of DNA adenine methylation on methyl-directed mismatch repair in *Escherichia coli*. *Genetics* **104**:571-582.
 31. Shoemaker, N. B., and W. R. Guild. 1974. Destruction of low efficiency markers is a slow process occurring at a heteroduplex stage of transformation. *Mol. Gen. Genet.* **128**:283-290.
 32. Stassi, D. L., P. Lopez, M. Espinosa, and S. A. Lacks. 1981. Cloning of chromosomal genes in *Streptococcus pneumoniae*. *Proc. Natl. Acad. Sci. U.S.A.* **78**:7028-7032.
 33. Tiraby, G., and M. S. Fox. 1973. Marker discrimination in transformation and mutation of pneumococcus. *Proc. Natl. Acad. Sci. U.S.A.* **70**:3541-3545.
 34. Tye, B. K., P. O. Nyman, I. R. Lehman, S. Hochhauser, and B. Weiss. 1977. Transient accumulation of Okazaki fragments as a result of uracil incorporation into nascent DNA. *Proc. Natl. Acad. Sci. U.S.A.* **74**:154-157.
 35. Weinrauch, Y., and S. A. Lacks. 1981. Nonsense mutations in the amyloamylase gene and other loci of *Streptococcus pneumoniae*. *Mol. Gen. Genet.* **183**:7-12.
 36. Wildenberg, J., and M. Meselson. 1975. Mismatch repair in heteroduplex DNA. *Proc. Natl. Acad. Sci. U.S.A.* **72**:2202-2206.