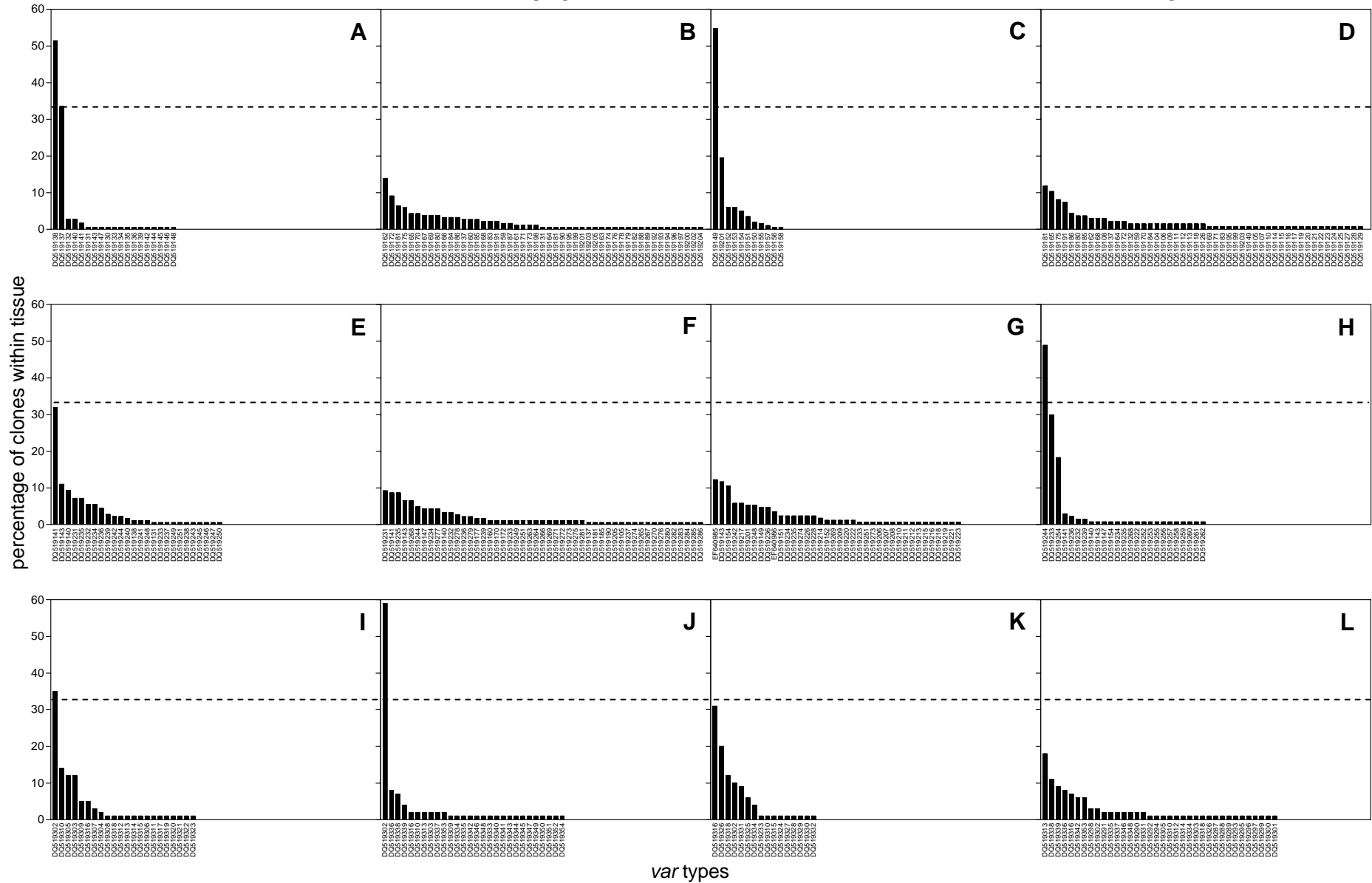


BRAIN

LUNG

HEART

SPLEEN



var types

Figure S1. Frequency of cloning of individual *var* types within the organs of Malawian paediatric malaria patients PM 30 (A-D), PM 32 (E-H) and PM 55 (I-L). *Var* types are listed in order of decreasing frequency of cloning within each tissue and are identified by accession number. The dashed line indicates 33% frequency of cloning, the cut-off point for dominance of 1-2 *var* types.