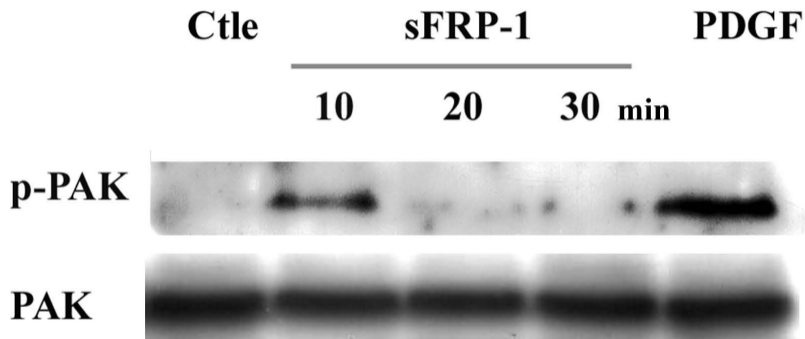
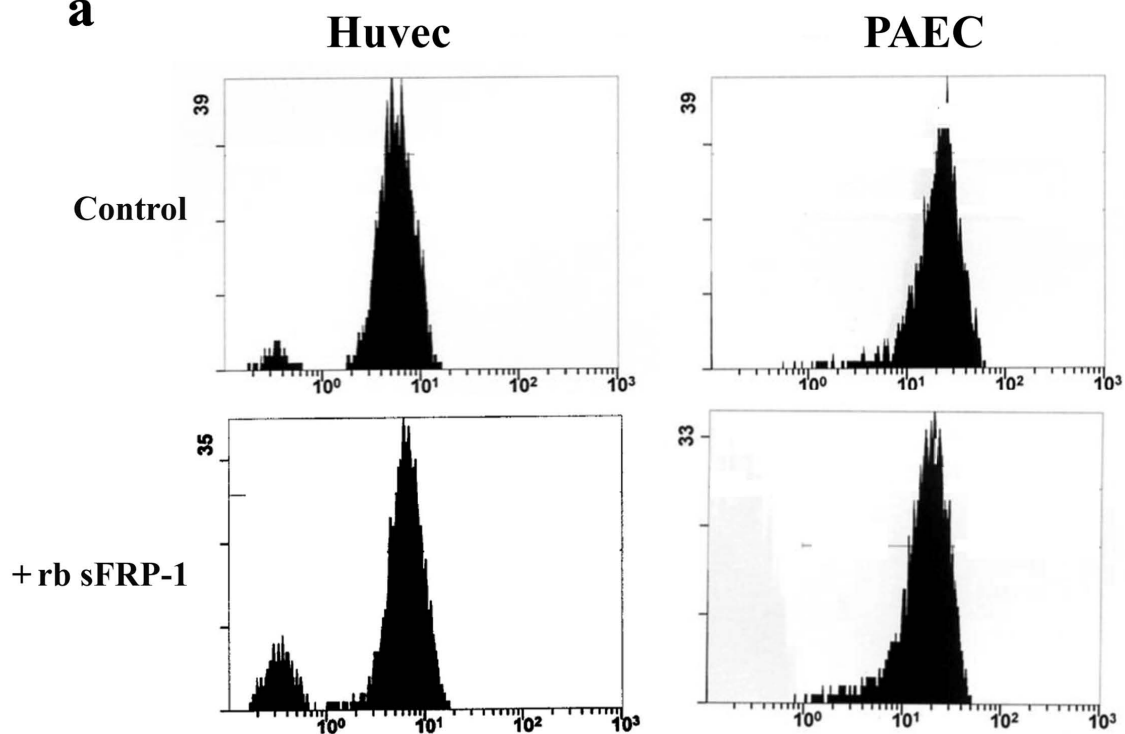


# Supplementary Fig. 1

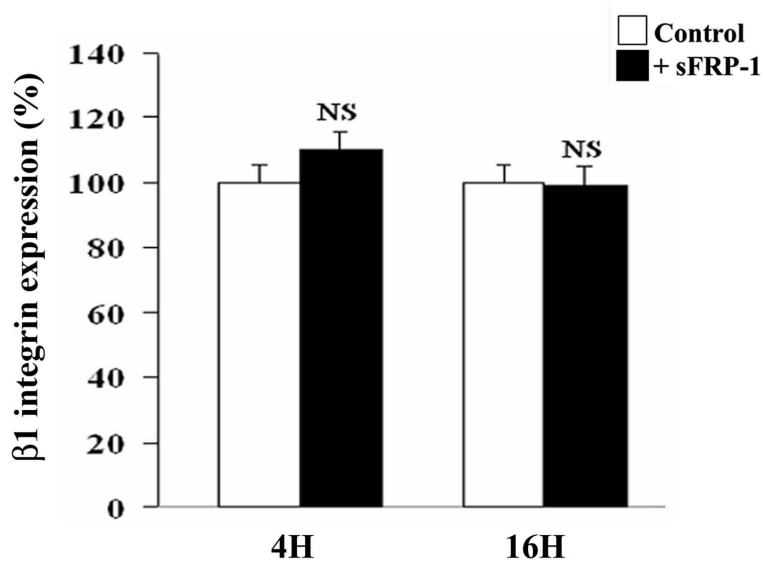


# Supplementary Fig. 2

**a**

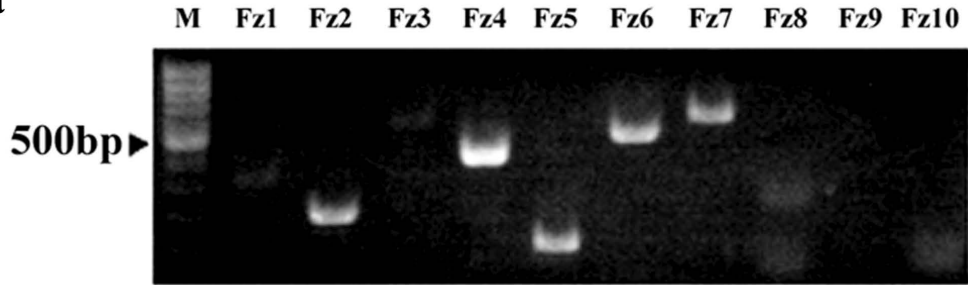


**b**

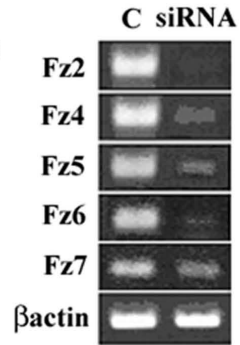


# Supplementary Fig. 3

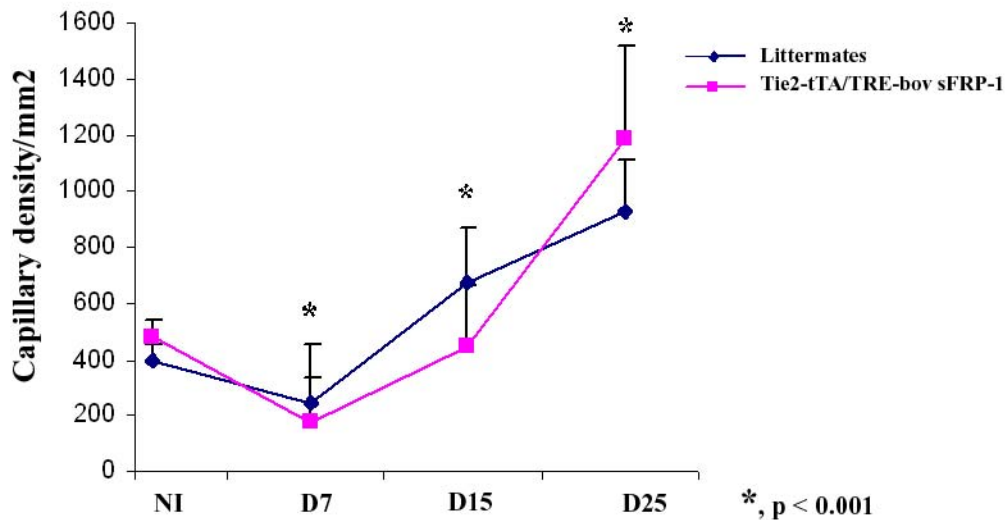
**a**



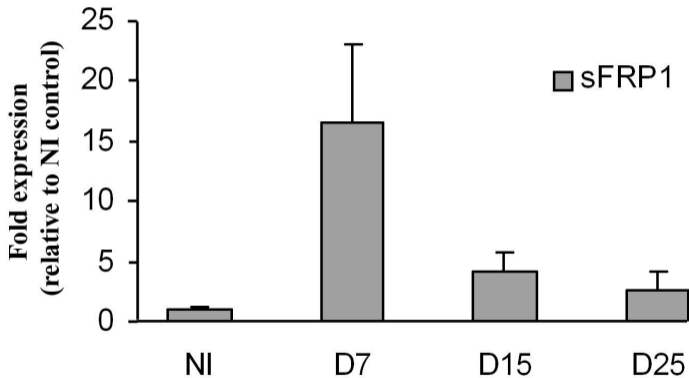
**b**



**Supplementary Fig. 4**



# Supplementary Fig 5



## Supplementary Figures :

**Supplementary Figure 1:** Evaluation by western blot of the levels of p- $\alpha$ -PAK and of  $\alpha$ -PAK total under rb sFRP-1 activation at different time points (10, 15 and 30 min). Control was done with PDGFBB (20ng/ml) activation at 15 min.

**Supplementary Figure 2:**  $\beta$ 1 subunit expression on MS1 or on PAEC cell surface under rb sFRP-1 treatment. Cells were treated with rb sFRP-1 for 4 and 18 hours, labeled with monoclonal antibody against the  $\beta$ 1 subunit and assessed for  $\beta$ 1 subunit expression by flow cytometry. (a) Data from one representative of three experiments are presented for each type of cells. (b) Graphs display histograms of relative fluorescence. Results are representative of three independent experiments per condition and are expressed as mean expression percent of control without rb sFRP-1 treatment.

**Supplementary Figure 3:** Repression of Fzd members expression using siRNA strategy. (a) RT-PCR analysis of Fzd family members in MS1 endothelial cells was performed as outlined in the *Materials and Methods* section. Fzd: Frizzled primers. M: 100 bp ladder as molecular weight marker. (b) siRNA-mediated repression of Fzd members in MS1 cells assessed by RT-PCR analysis. Panel shows a representative gel migration of PCR product.

**Supplementary Figure 4:** Effect of bov sFRP-1 overexpression on capillary formation: Quantitative evaluation of capillary density using CD31 immunostaining (number of vessel/mm<sup>2</sup>) in tissues retrieved from ischemic anterior tibialis muscle of littermates and Tie2-tTA/TRE-bov sFRP-1 mice. Capillary density was significantly lower at days 7 and 14 after the surgery in Tie2-tTA/TRE- bov sFRP-1 versus littermate mice. (n=6 ).

**Supplementary Figure 5:** Quantitative real-time PCR analysis of sFRP-1 mRNA expression after ischemia. Graph shows the fold increase in sFRP-1 expression upon ischemia from day 7 to day 25 after ischemia relative to non-ischemic conditions (NI) (n=3). All samples were assayed in triplicate.