

Supplemental Data

A Positive Role for NLI/LDB1 in Long-Range

β -Globin Locus Control Region Function

Sang-Hyun Song, Chunhui Hou, and Ann Dean

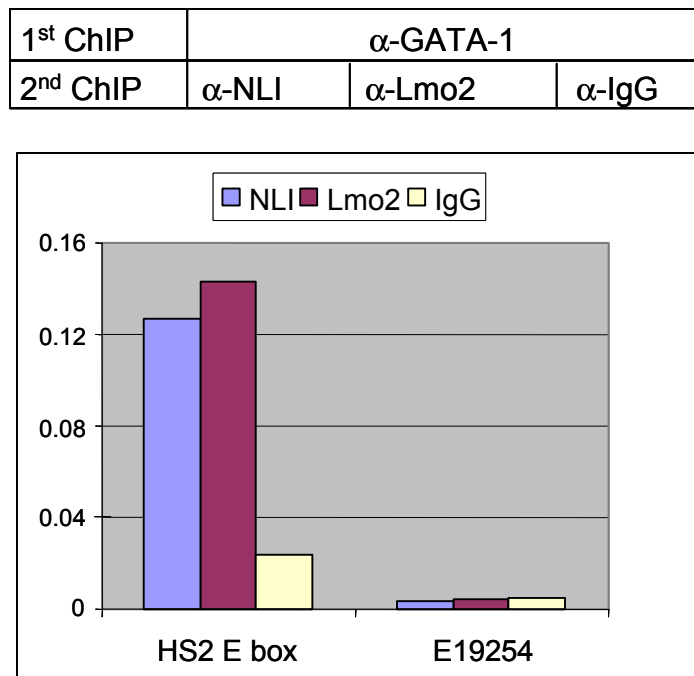


Figure S1. Double ChIP Assay Confirms Colocalization of the Ebox/GATA Complex at HS2 In Vivo

For double ChIP assay, chromatin prepared from K562 cells was subjected to immunoprecipitation with anti-GATA-1 antibodies. The chromatin was recovered and precipitated a second time with anti-NLI, anti-Lmo2 or control IgG. ChIP assays were performed as described in the legend to Figure 1.

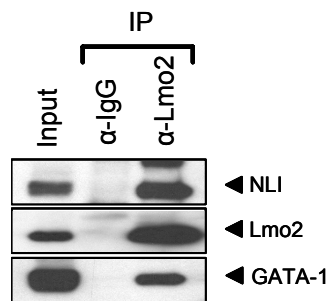


Figure S2. Lmo2 Immunoprecipitates Both NLI and GATA-1

GATA-1 was unable to stabilize Lmo2 in the absence of NLI. Therefore, we co-expressed all three proteins in 293 cells. Under these conditions, the interaction of Lmo2 with both NLI and GATA-1 could be visualized.