

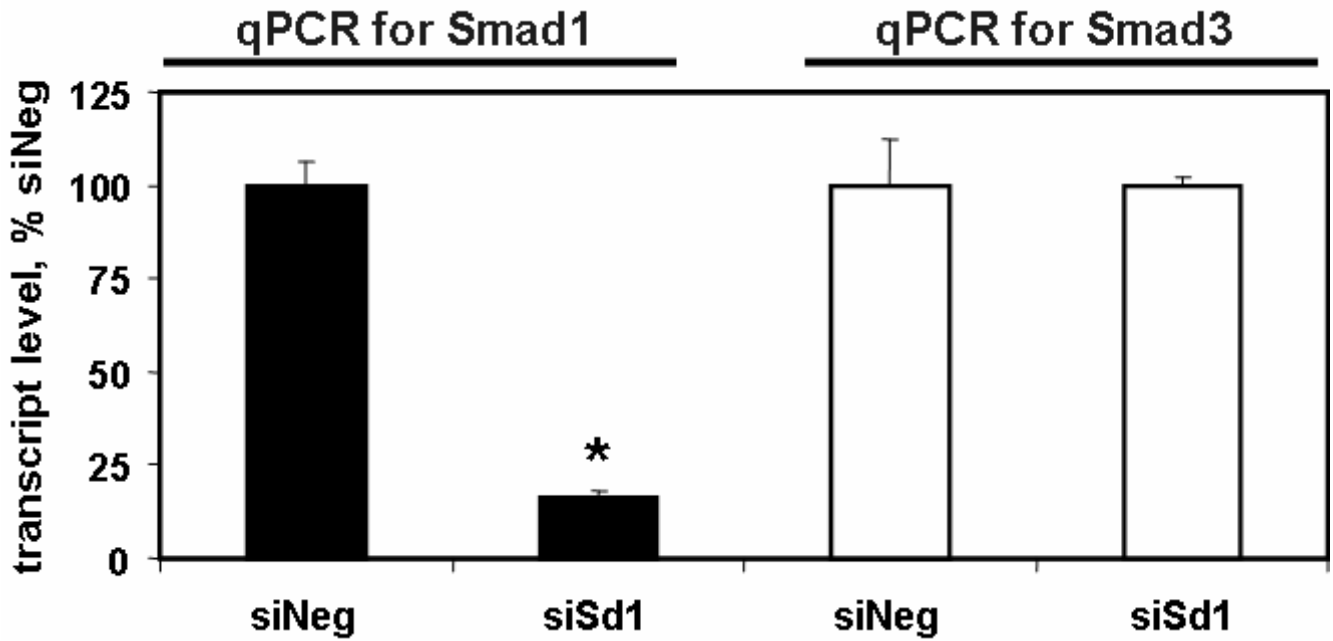
## Supplemental figure legends

Supplemental figure 1. Smad1 siRNA (siSd1) is effective and specific. In (A), PC3-M cells were transfected with siSd1 or with non-targeting siRNA (siNeg) and levels of Smad1 (Sd1) and Smad3 (Sd3) transcript (normalized to GAPDH) were measured by quantitative RT/PCR. The mean  $\pm$  S.D. (N = 2) relative levels of transcript from a single experiment are depicted. In (B), PC3-M cells were transfected with endoglin (ENG) or empty vector (VC) followed by either siSd1 or siNeg, and Western blot performed, using antibodies specific to phosphorylated-Smad1 and -3 (pSmad1 and -3; i.e., recognizes both pSmad1 and pSmad3), total Smad1, and GAPDH.

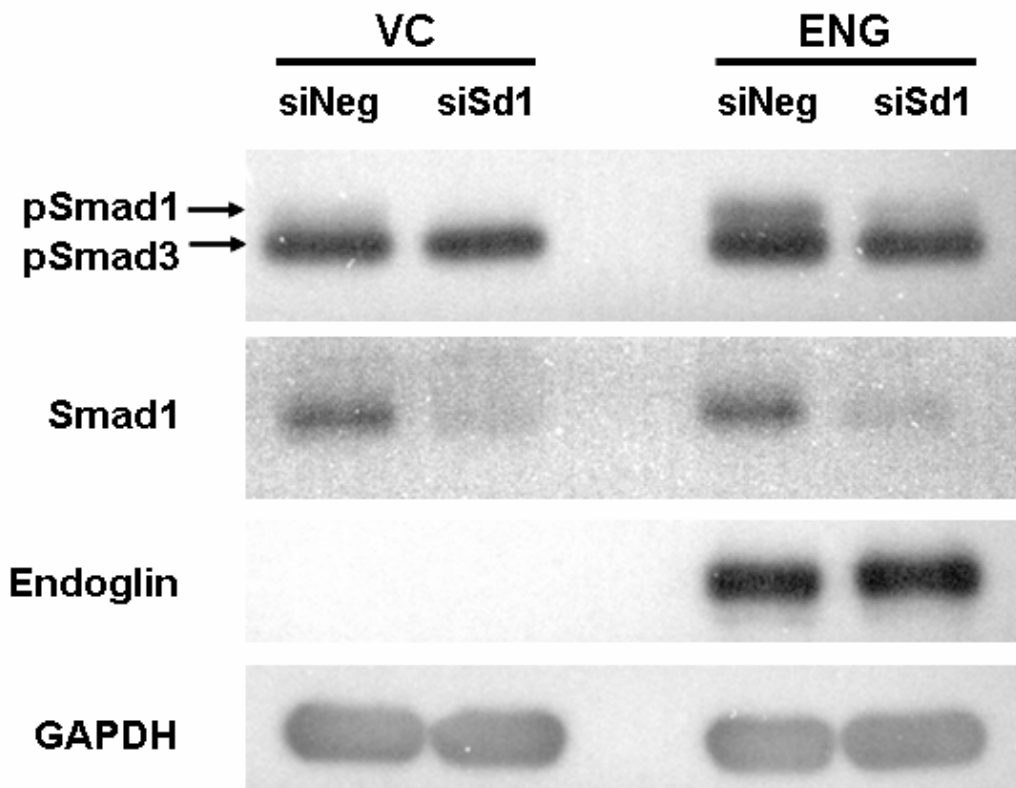
Supplemental Figure 2 ALK2 and ALK5 siRNA are effective and specific. In (A), PC3-M cells were transfected with siRNA to ALK2 (siALK2), ALK5 (siALK5), or with non-targeting siRNA (siNeg), and levels of ALK2 or ALK5 transcript (normalized to GAPDH) were measured by qRT/PCR. The mean  $\pm$  S.D. (N = 2) relative levels of transcript from a single experiment are depicted. In (B) PC3-M were transfected with HA-tagged ALK2 (HA-ALK2), HA-tagged ALK5 (HA-ALK5), or vector control (VC), followed by transfection with siALK2, siALK5, or siNeg. . Western blot was then performed, using antibodies specific to HA and GAPDH.

# Supplemental Figure 1

## A

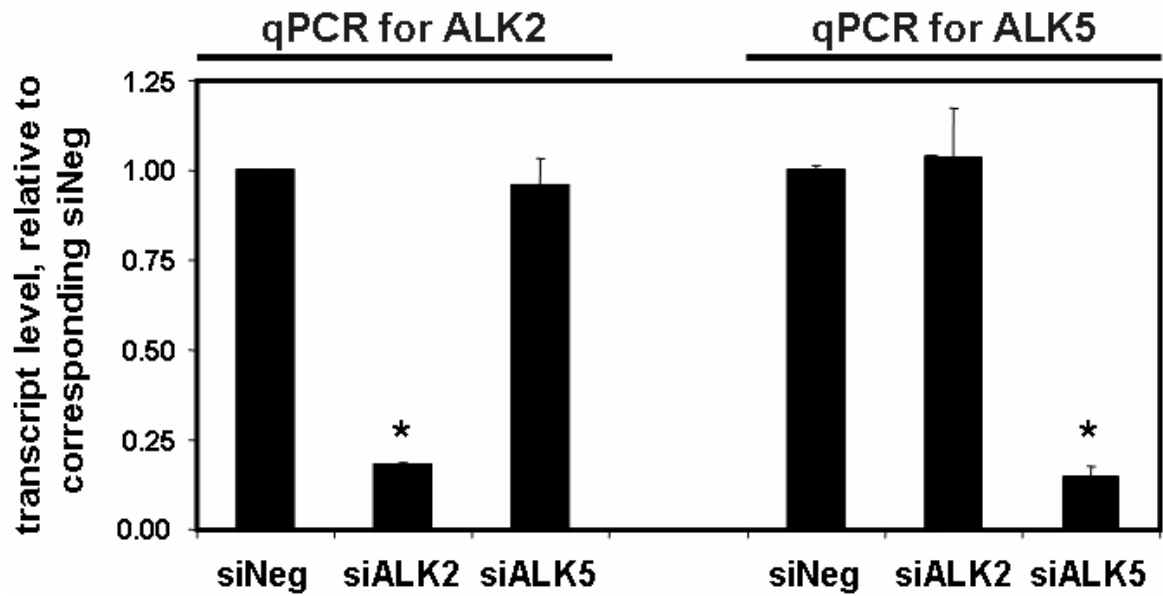


## B



# Supplemental Figure 2

## A



## B

