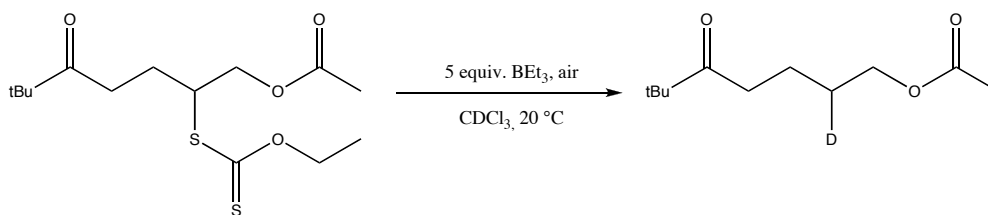
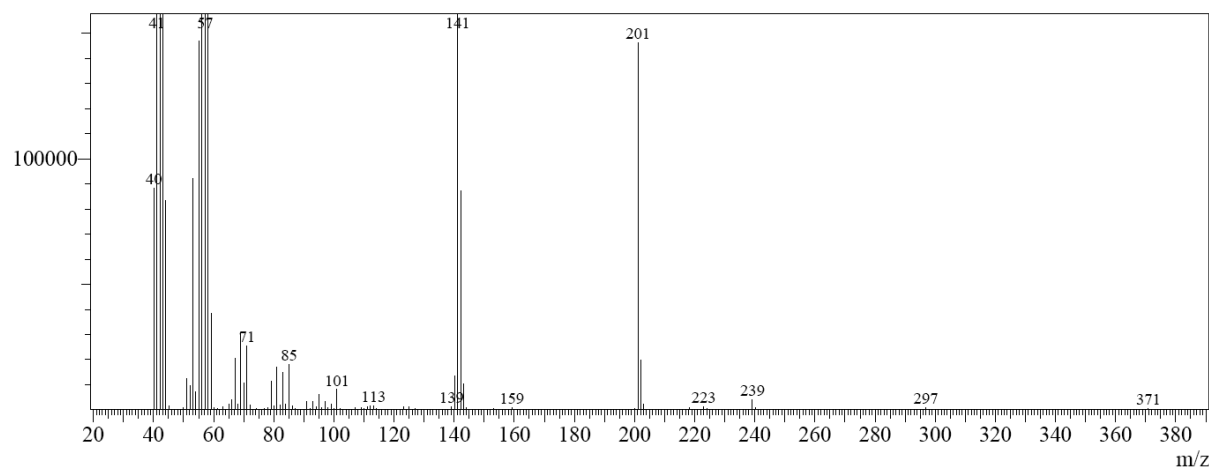
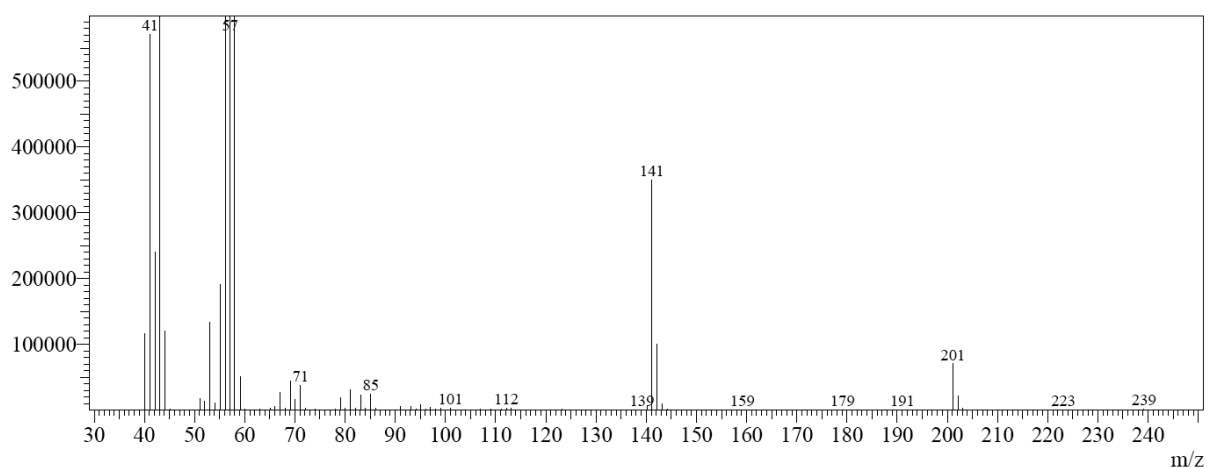
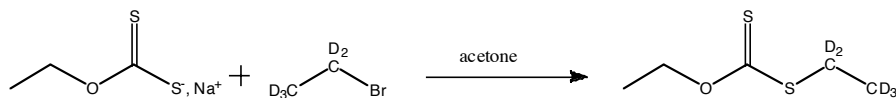


Line#: 1 R.Time:6.000(Scan#:421)
 MassPeaks:80
 RawMode:Single 6.000(421) BasePeak:57.15(8390970)
 BG Mode:None



Line#: 1 R.Time:5.992(Scan#:420)
 MassPeaks:130
 RawMode:Averaged 5.933-6.050(413-427) BasePeak:57.05(8418437)
 BG Mode:None



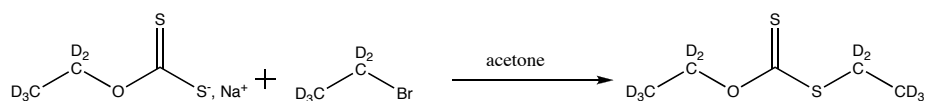
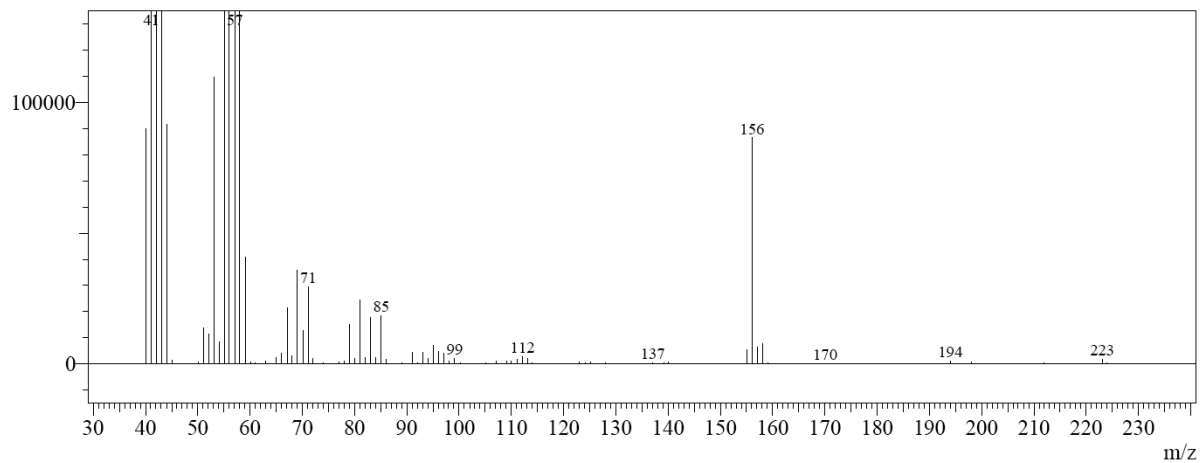


Line#:1 R.Time:5.225(Scan#:328)

MassPeaks:108

RawMode:Averaged 5.167-5.283(321-335) BasePeak:57.05(8428816)

BG Mode:None

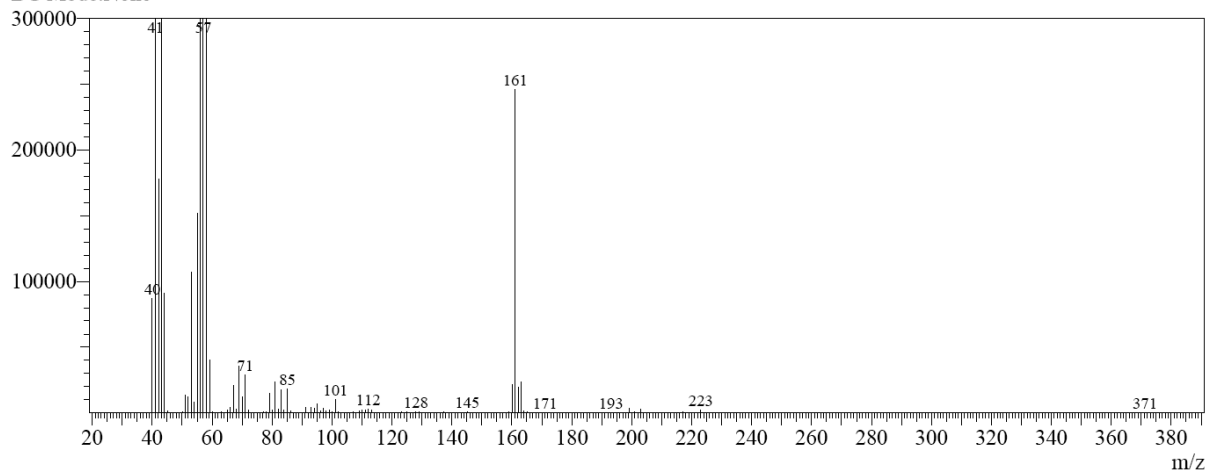


Line#:1 R.Time:5.158(Scan#:320)

MassPeaks:118

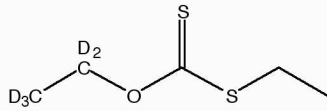
RawMode:Averaged 5.117-5.208(315-326) BasePeak:57.05(8430370)

BG Mode:None



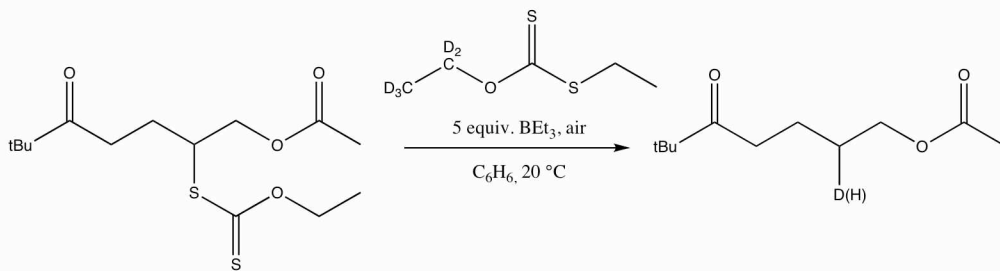
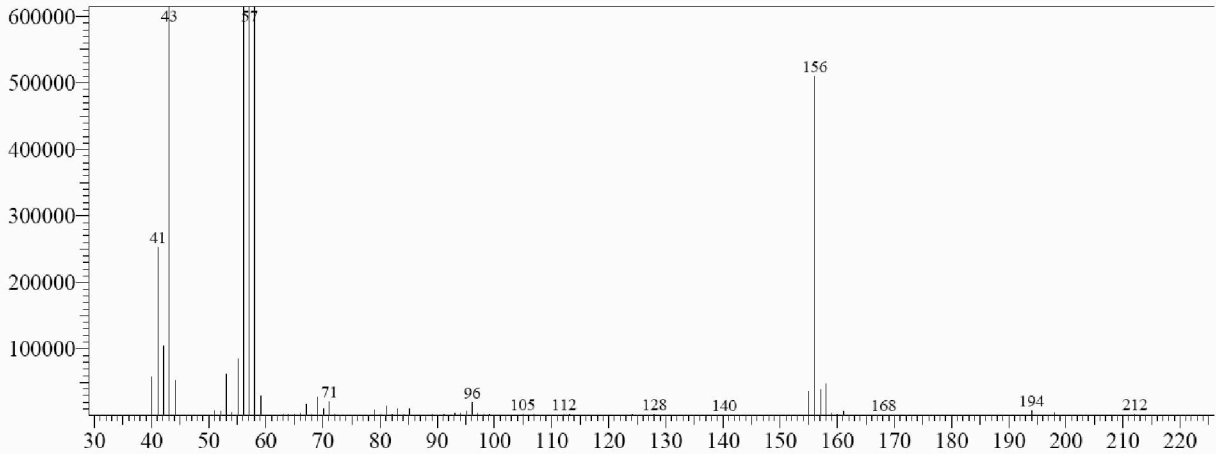
Compound 3

S48

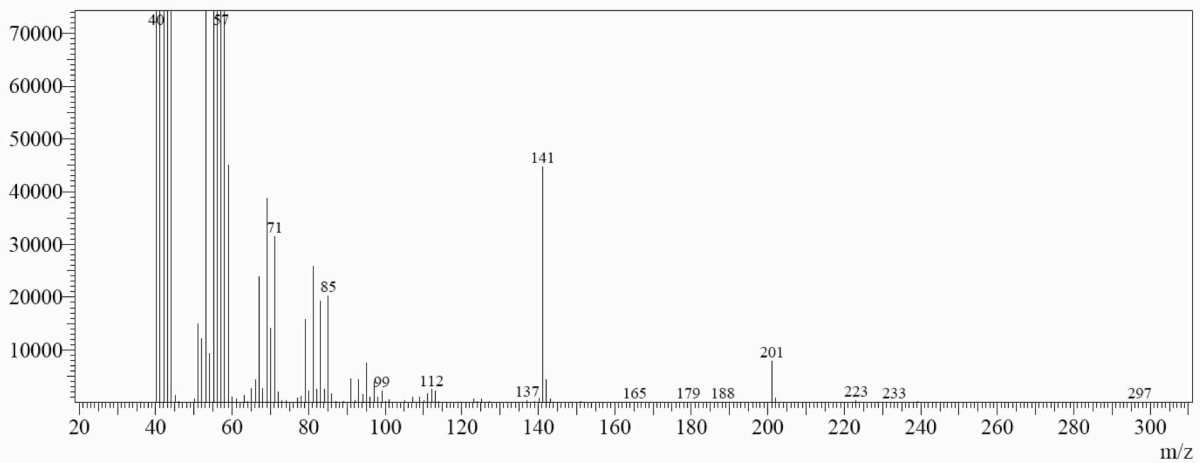


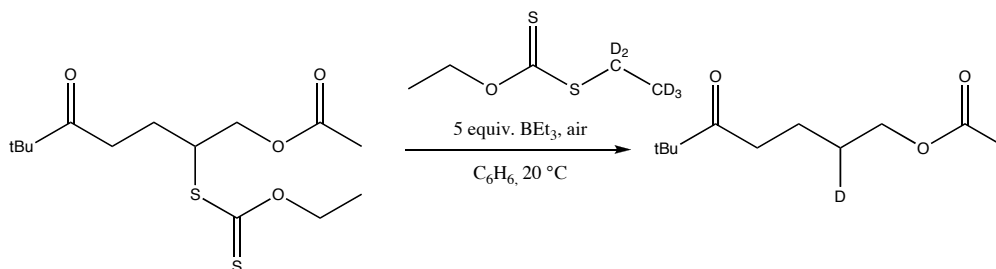
Chemical Formula: $C_5H_5D_5OS_2$
 Exact Mass: 155,04869
 Molecular Weight: 155,29311

Line#:1 R.Time:3.233(Scan#:89)
 MassPeaks:120
 RawMode:Averaged 3.217-3.283(87-95) BasePeak:57.15(8405324)
 BG Mode:None

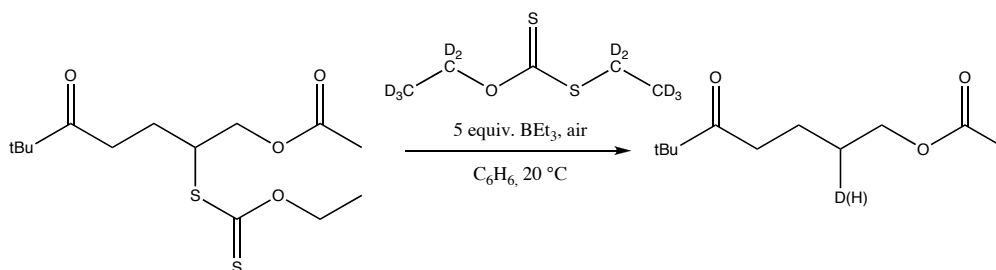
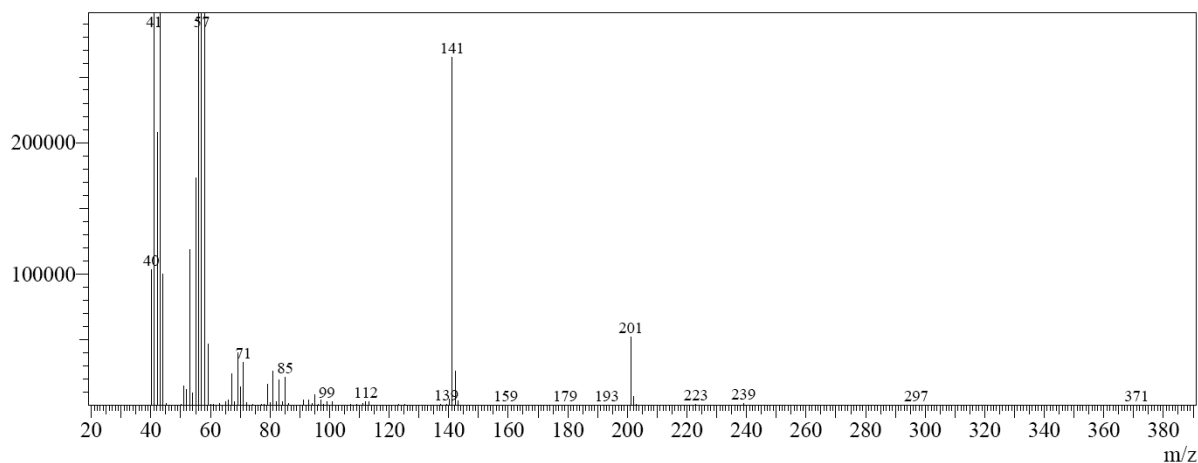


Line#:1 R.Time:6.000(Scan#:421)
 MassPeaks:94
 RawMode:Averaged 5.950-6.008(415-422) BasePeak:57.05(8396871)
 BG Mode:None

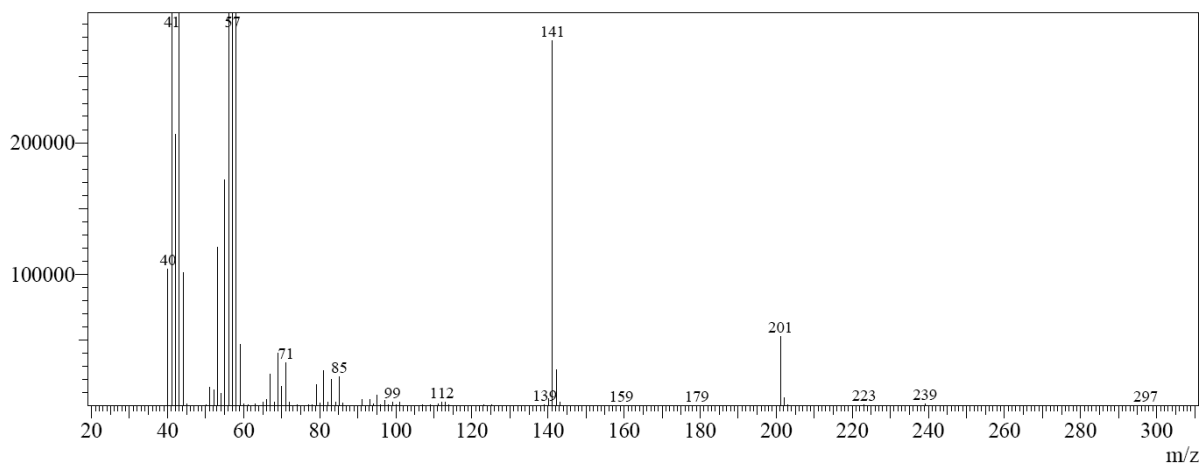


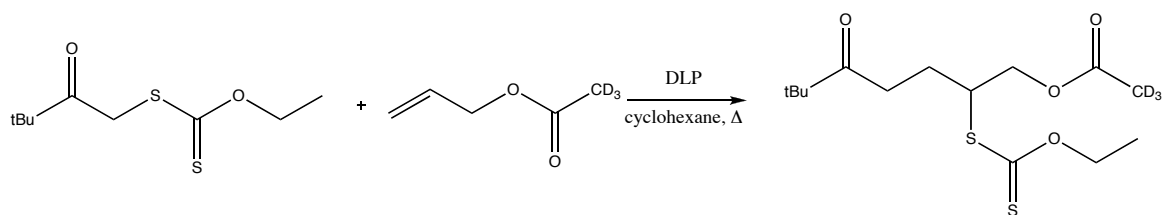


Line#: 1 R.Time: 5.992(Scan#: 420)
 MassPeaks: 111
 RawMode: Averaged 5.958-6.008(416-422) BasePeak: 57.05(8396884)
 BG Mode: None

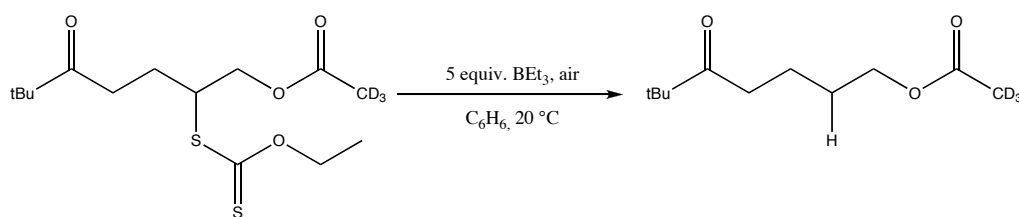
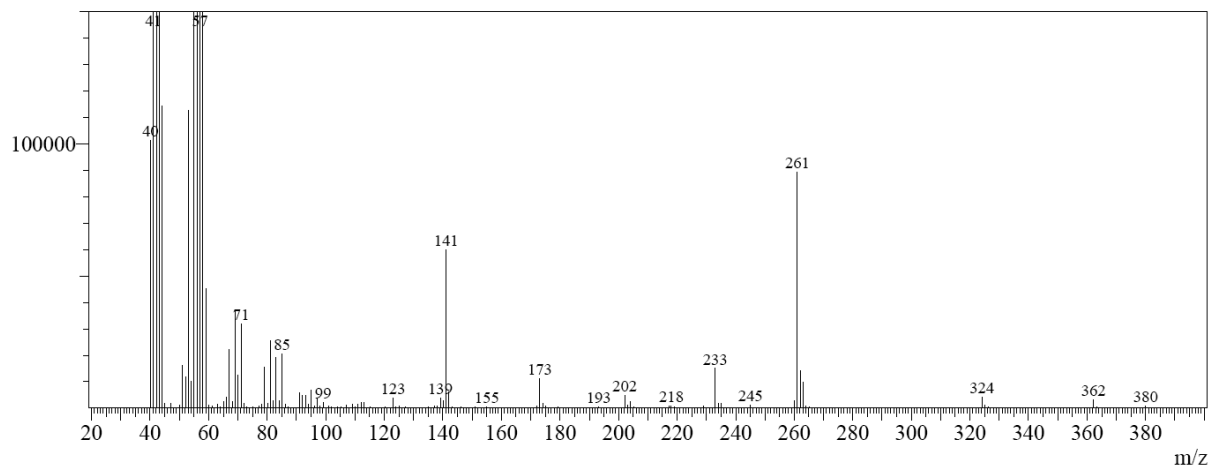


Line#: 1 R.Time: 5.992(Scan#: 420)
 MassPeaks: 95
 RawMode: Averaged 5.975-6.008(418-422) BasePeak: 57.05(8395550)
 BG Mode: None

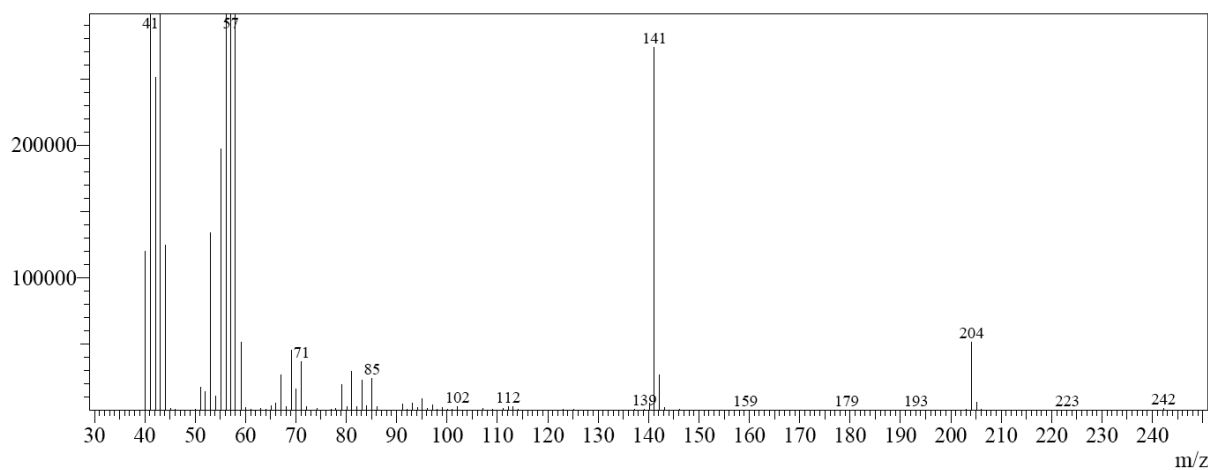


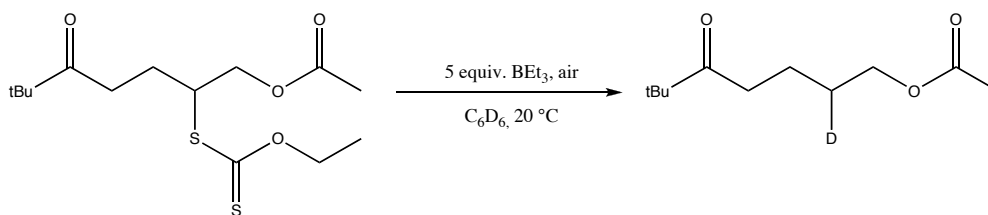


Line#1 R.Time:15.483(Scan#:1559)
 MassPeaks:108
 RawMode:Single 15.483(1559) BasePeak:57.05(8431497)
 BG Mode:None

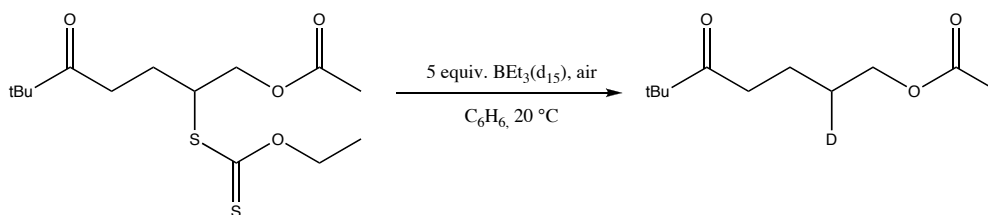
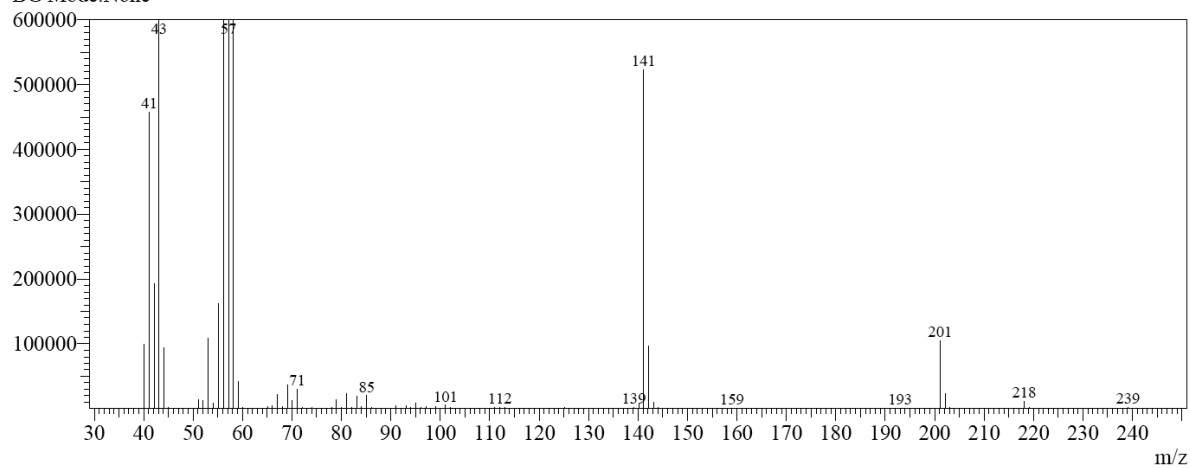


Line#1 R.Time:5.975(Scan#:418)
 MassPeaks:117
 RawMode:Averaged 5.942-6.017(414-423) BasePeak:57.05(8398090)
 BG Mode:None

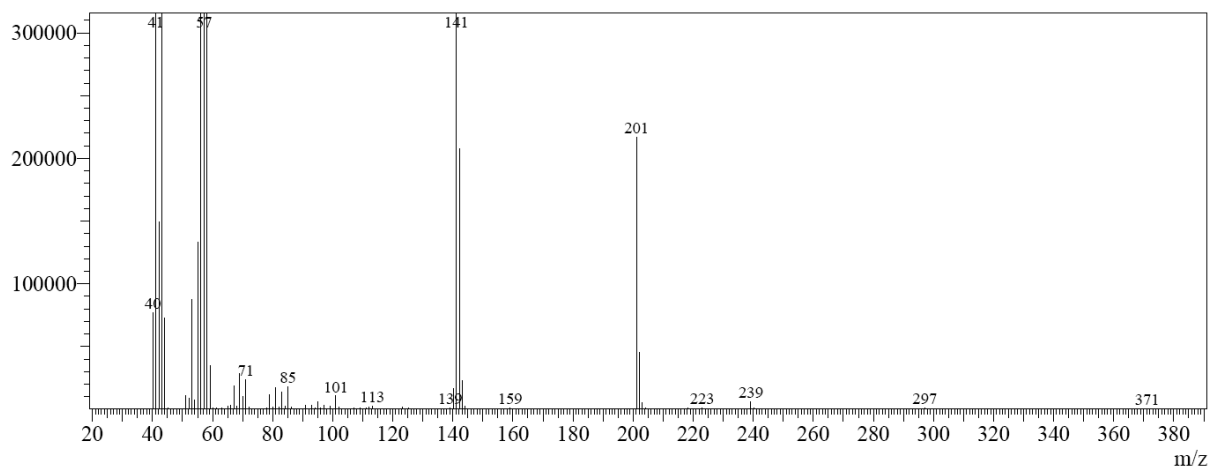


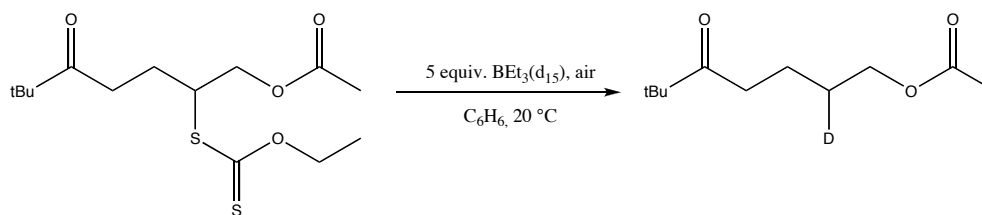


Line#:1 R.Time:5.958(Scan#:416)
 MassPeaks:86
 RawMode:Single 5.958(416) BasePeak:57.15(8389521)
 BG Mode:None



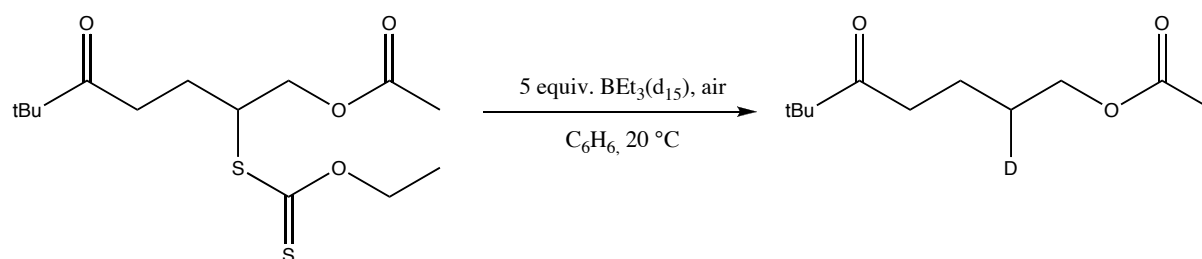
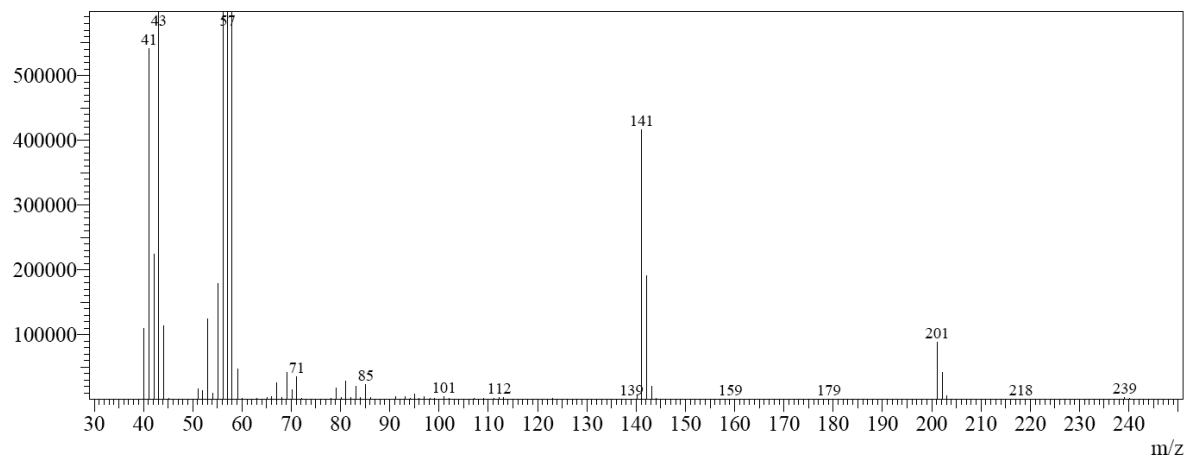
Line#:1 R.Time:5.942(Scan#:414)
 MassPeaks:85
 RawMode:Single 5.942(414) BasePeak:57.15(8396984)
 BG Mode:None





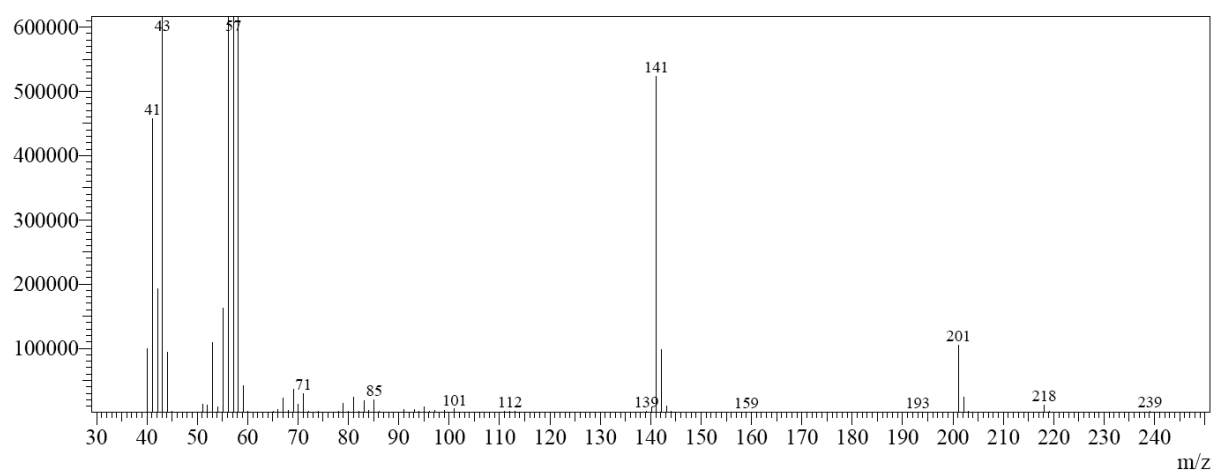
Teflon RBF

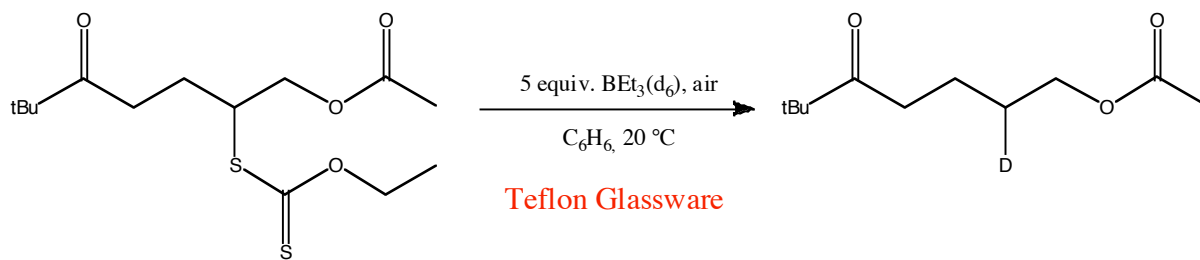
Line#:1 R.Time:5.983(Scan#:419)
 MassPeaks:101
 RawMode:Averaged 5.967-5.992(417-420) BasePeak:57.05(8410628)
 BG Mode:None



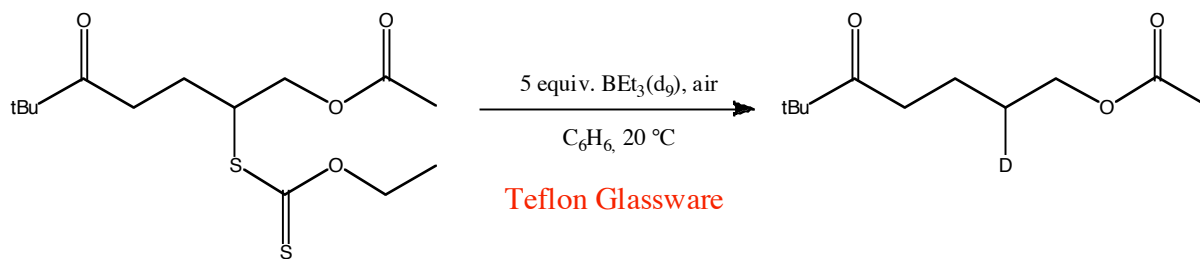
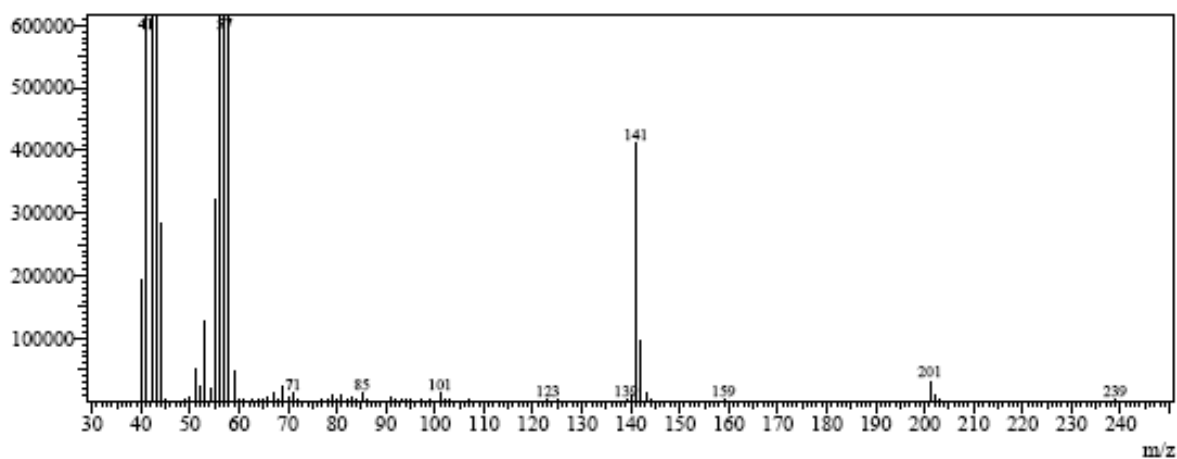
Teflon RBF + glass rings

Line#:1 R.Time:5.965(Scan#:416)
 MassPeaks:85
 RawMode:Single 5.965(416) BasePeak:57.14(8389514)
 BG Mode:None

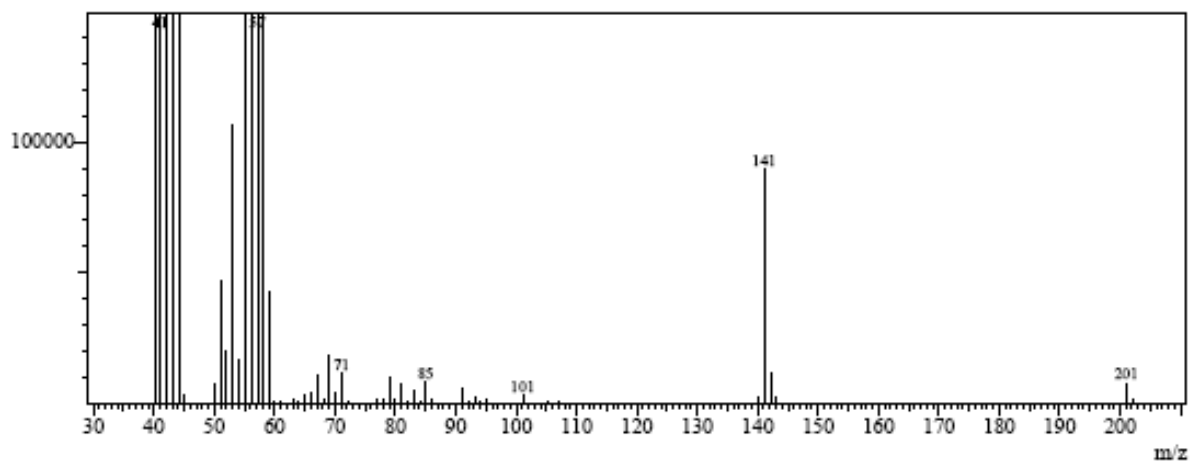




Line#:1 R.Time:5.958(Scan#:416)
 MassPeaks:65
 RawMode:Single 5.958(416) BasePeak:57.05(8428925)
 BG Mode:None



Line#:1 R.Time:5.967(Scan#:417)
 MassPeaks:52
 RawMode:Single 5.967(417) BasePeak:57.15(8388842)
 BG Mode:None



Deuterium incorporation measurements

Table	Entry	m/z 141 Integration	m/z 142 Integration	m/z 142 corrected for natural abundance	% Deuteration based on peaks 141/142	m/z 201 Integration	m/z 202 Integration	m/z 202 corrected for natural abundance	% Deuteration based on peaks 201/202	% Deuteration Average Value	
1	14 ⁹	350392	100713	35039,2	15,78	70477	22312	9162,01	15,72	15,75	
<p>5 equiv. BEt₃, air CDCl₃, 20 °C</p>											
1	19	816661	87221	81666,1	0,68	146383	19694	19029,79	0,45	0,56	
<p>5 equiv. BEt₃, air THF(d), 20 °C</p>											
2	1	44780	4318	4478	-0,36	7795	943	1013,35	-0,91	-0,63	
<p>5 equiv. BEt₃, air C₆H₆, 20 °C</p>											
2	2	264669	25852	26466,9	-0,23	51900	6637	6747	-0,21	-0,22	
<p>5 equiv. BEt₃, air C₆H₆, 20 °C</p>											
2	3	277333	27343	27733,3	-0,14	53010	6367	6891,3	-1,00	-0,57	
<p>5 equiv. BEt₃, air C₆H₆, 20 °C</p>											
3	1	523335	97405	52333,5	7,93	104388	23466	13570,44	8,66	8,29	
<p>5 equiv. BEt₃(d₃), air C₆H₆, 20 °C</p>											

Deuterium incorporation measurements

Table	Entry	m/z 141 Integration	m/z 142 Integration	m/z 142 corrected for natural abundance	% Deuteration based on peaks 141/142	m/z 201 Integration	m/z 202 Integration	m/z 202 corrected for natural abundance	% Deuteration based on peaks 201/202	% Deuteration Average Value
3	2		50254	26881,2	8,00	68919	15497	8959,47	8,66	8,33
<p>5 equiv. BEt₃(d₁₃), air C₆H₆, 20 °C</p>										
3	3	545903	255493	54590,3	26,90	108257	53232	14073,41	26,56	26,73
<p>5 equiv. BEt₃(d₁₃), air C₆H₆, 20 °C Teflon glassware</p>										
3	4	416641	190454	41664,1	26,31	87873	41393	11423,49	25,43	25,87
<p>5 equiv. BEt₃(d₁₅), air C₆H₆, 20 °C Teflon glassware</p>										
3	5	410239	94345	41023,9	11,50	31783	9420	4131,79	14,27	12,88
<p>5 equiv. BEt₃(d₉), air C₆H₆, 20 °C Teflon Glassware</p>										
3	6	89743	11724	8974,3	2,97	7591	1303	986,83	4,00	3,49
<p>5 equiv. BEt₃(d₉), air C₆H₆, 20 °C Teflon Glassware</p>										
3	7	523335	97405	52333,5	7,93	104388	23466	13570,44	8,66	8,29
<p>5 equiv. BEt₃(d₁₃), air C₆H₆, 20 °C Teflon + Glass rings</p>										

Deuterium incorporation measurements

Table	Entry	m/z 141 Integration	m/z 142 Integration	m/z 142 corrected for natural abundance	% Deuteration based on peaks 141/142	m/z 201 Integration	m/z 202 Integration	m/z 202 corrected for natural abundance	% Deuteration based on peaks 201/202	% Deuteration Average Value
-------	-------	------------------------	------------------------	--	--	------------------------	------------------------	--	--	--------------------------------

