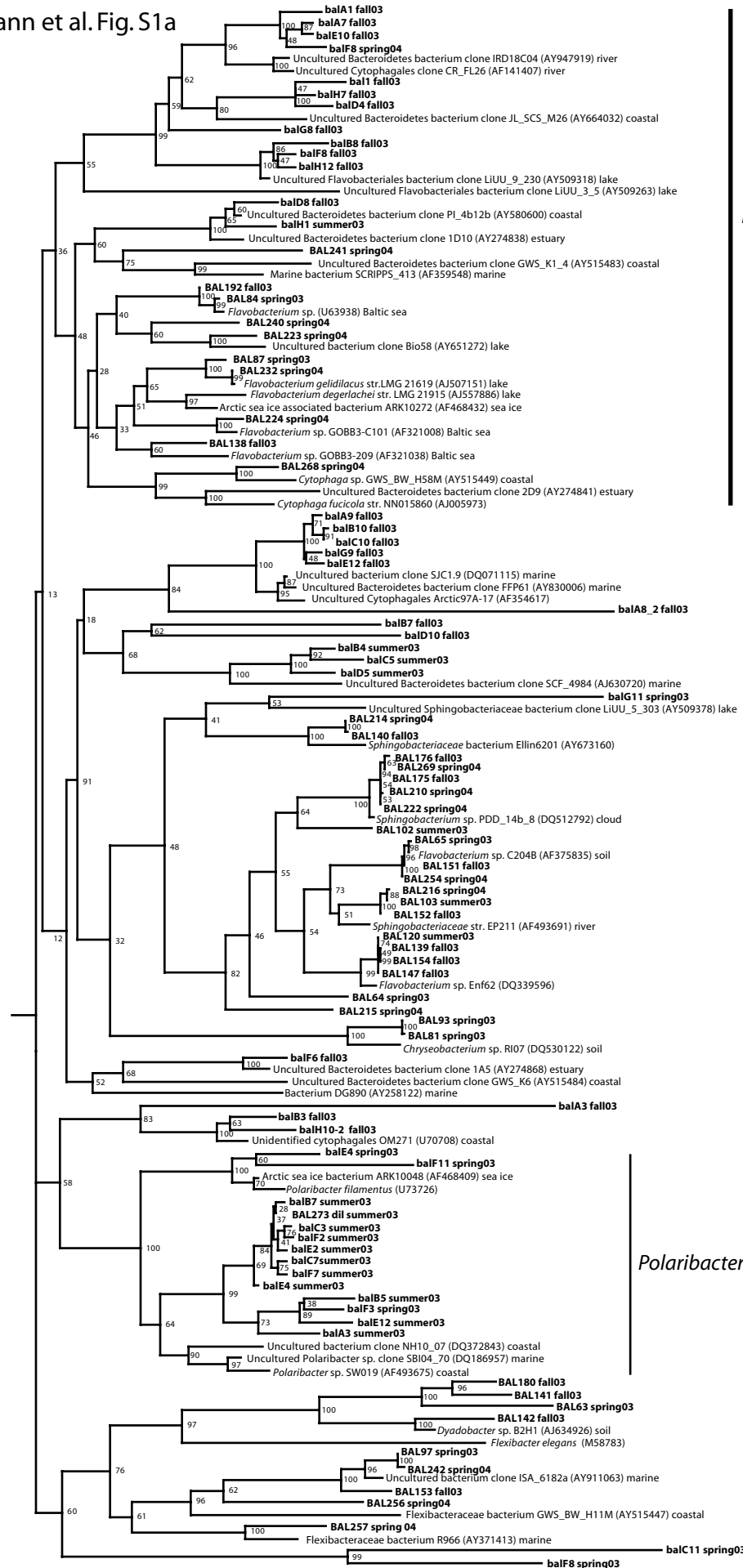


Supplemental material for Riemann et al. ” The Native Bacterioplankton Community in the Central Baltic Sea is Influenced by Freshwater Bacterial Species”

Figure S1. Neighbor-joining phylogenetic trees of 16S rDNA sequences (~460 bp) obtained from clones (small letters) or isolates (capital letters): *Bacteroidetes* (a), α - (b), and γ -*Proteobacteria* (c), and *Cyanobacteria* (d). Sequences with the prefix dil originate from dilution culture isolates.

Environment of origin has been inserted for reference sequences if information was available in GenBank.



Flavobacteriaceae

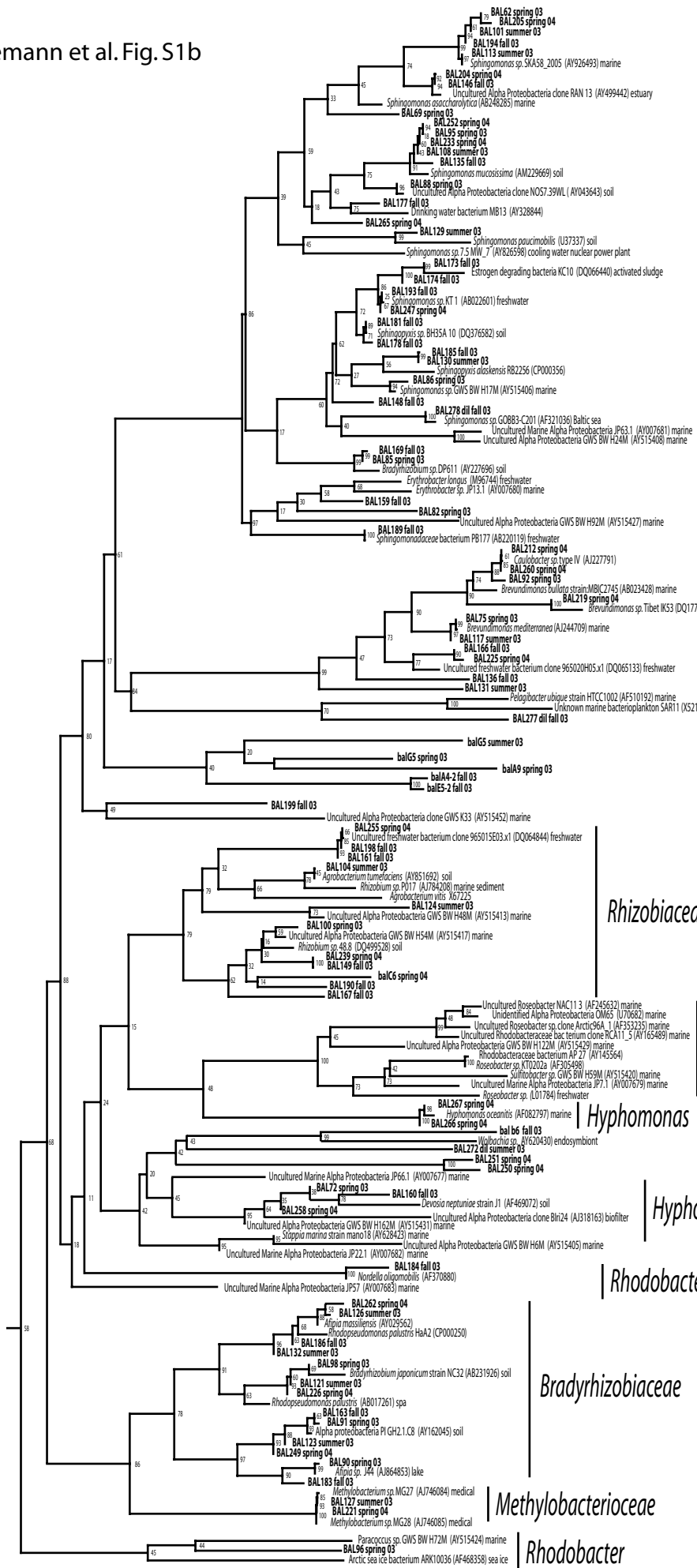
Sphingobacteriaceae

Cryomorpaceae

Flavobacteriaceae

Polaribacter

Flexibacteriaceae



Sphingomonadales

Caulobacterales

SAR11 clade

Rhizobiaceae

Roseobacter clade

Hyphomonas

Hyphomicrobiaceae

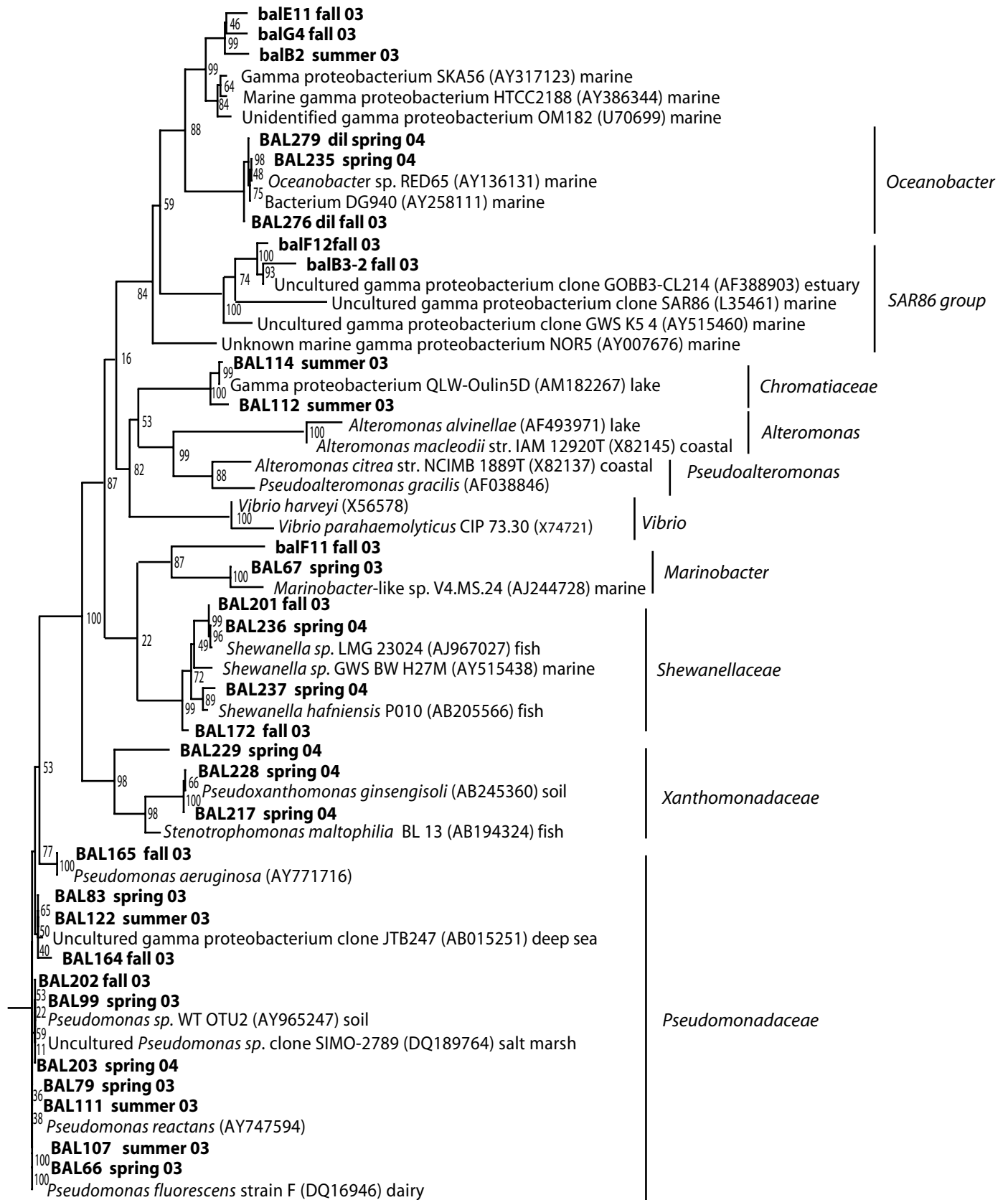
Rhodobacteraceae

Bradyrhizobiaceae

Methylobacteriaceae

Rhodobacter

0.1



Riemann et al. Fig. S1d

