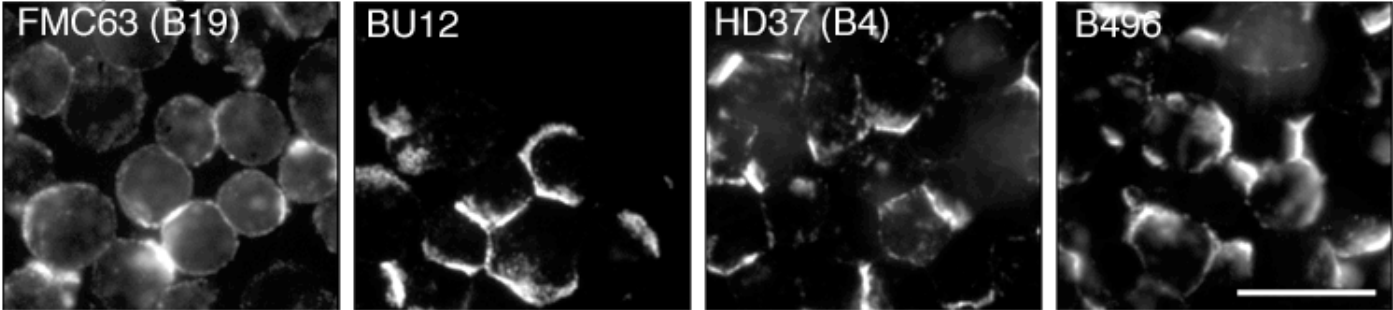
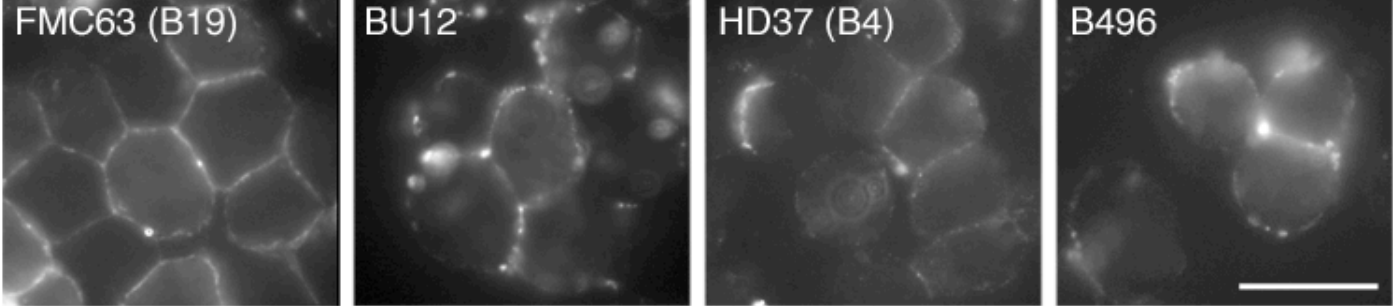


Ingle *et al.* Supplemental Figure 1:
Three other anti-CD19 antibodies behave
similarly to B496

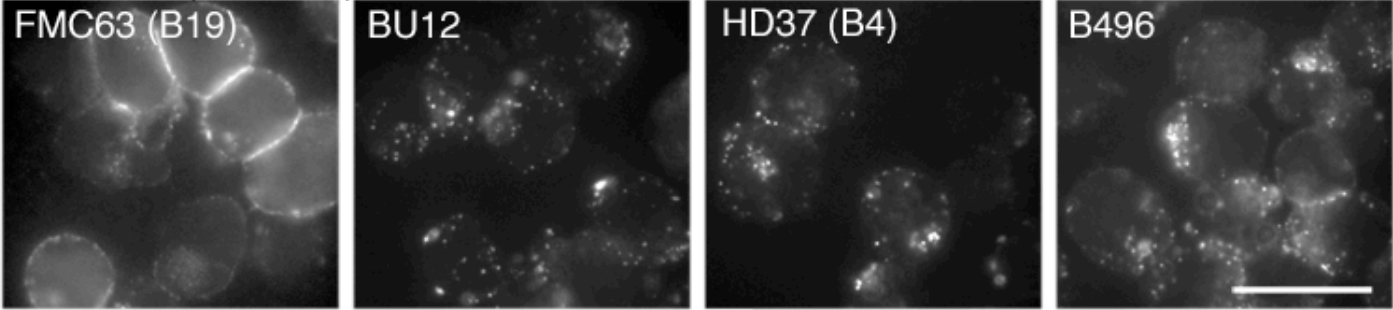
A: Raji (high CD21)



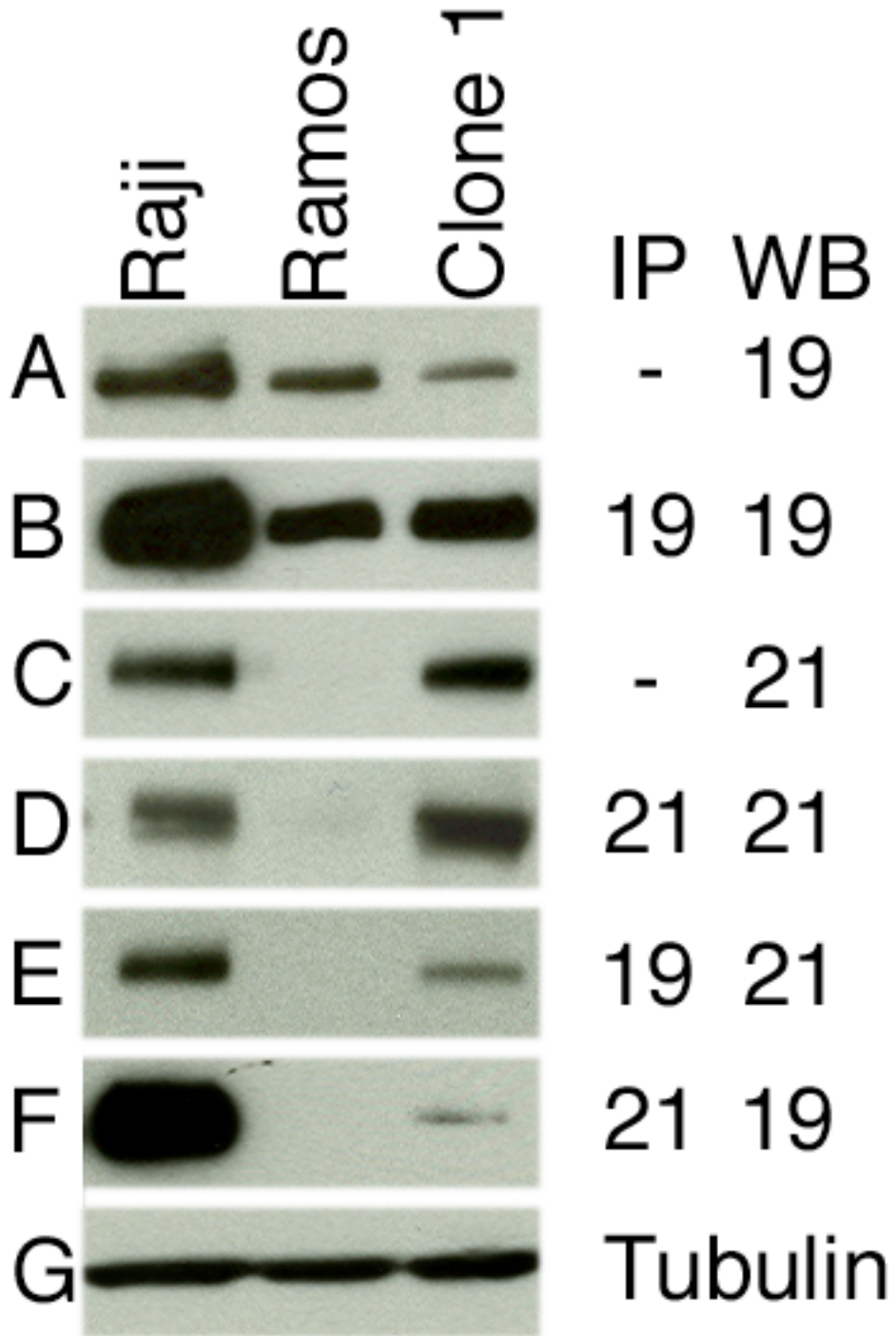
B: ARH77 (high CD21)



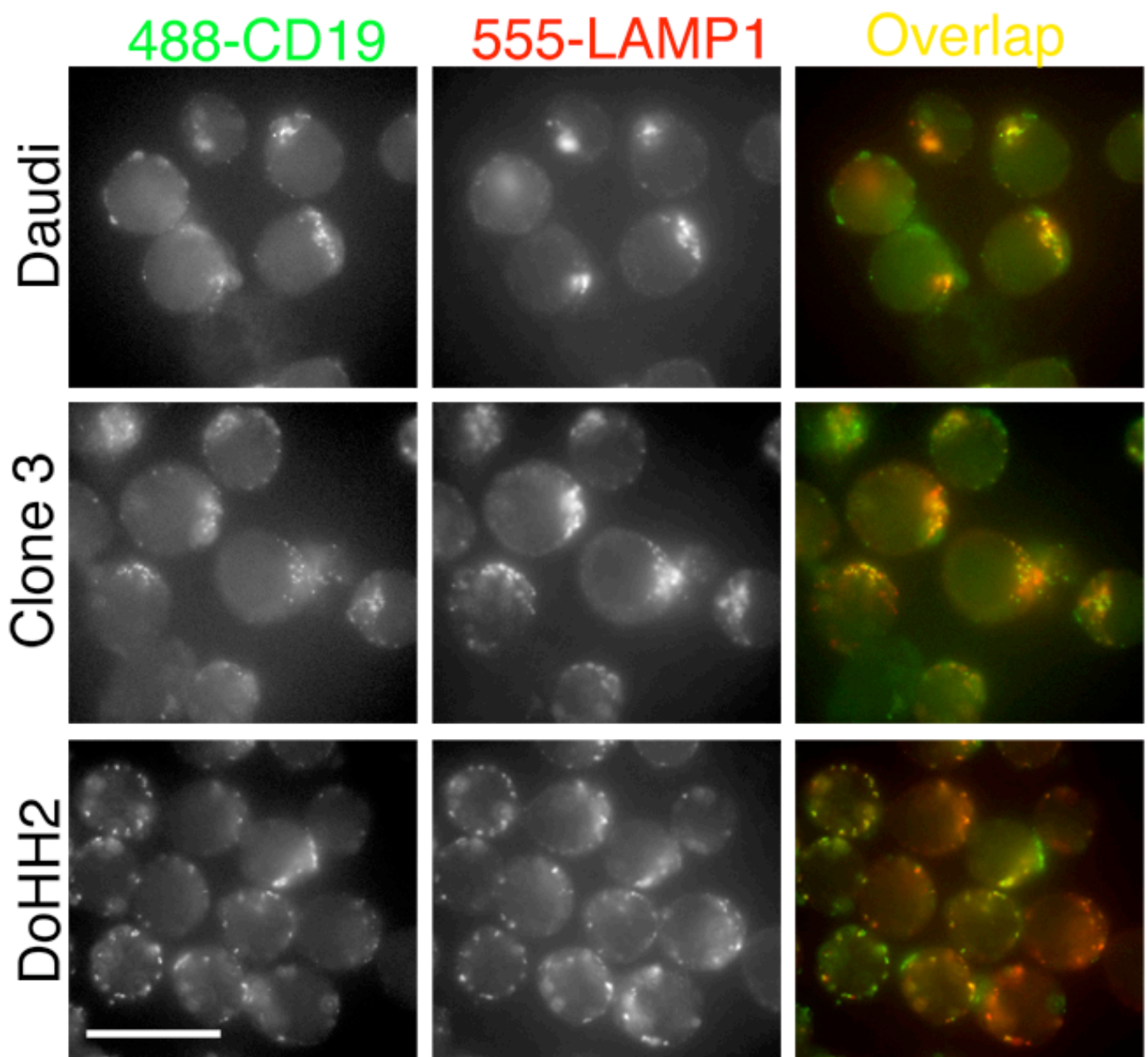
C: Ramos (no CD21)



Ingle *et al.* Supplemental Figure 2:
 CD21 complexes with CD19 in the Ramos-
 CD21 clone 1 stable cell line

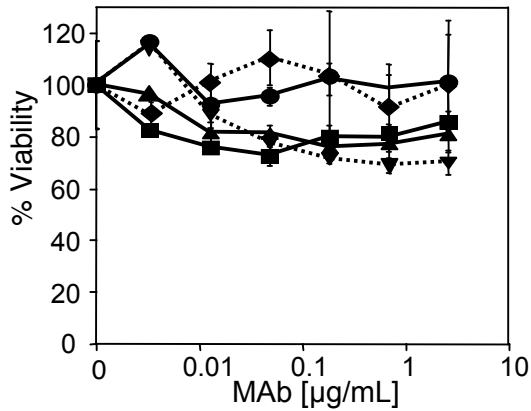


Ingle *et al.* Supplemental Figure 3:
Anti-CD19 is delivered to lysosomes
by 3 hours in all the internalizing cell
lines

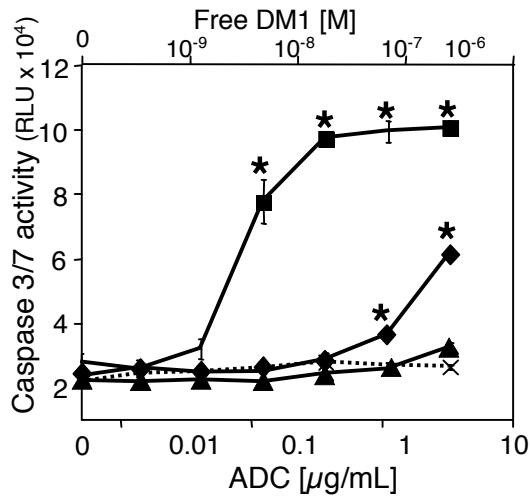


Ingle et al.
Supplemental Figure 4:
control cytotoxicity
assays

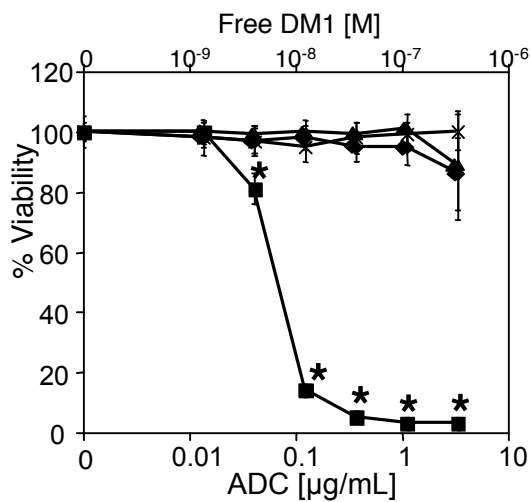
A) Viability assay of naked anti-CD19 antibodies in ARH77 cells



B) Apoptosis assay in ARH77 cells



C) Anti-CD19-MCC-DM1 in Jurkat cells



Ingle *et al.* Supplemental Figure 5:
Dual CD19,21 immunofluorescence of lymphomas

