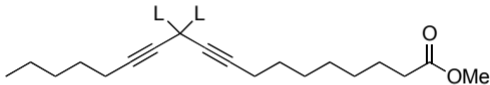


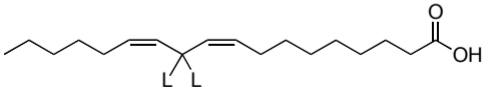
1eq. **7a** (L=H) or **7b** (L=D) / 0.95 eq. **11**

79% \downarrow 2eq. CuI, 2eq. NaI, 1.5eq. K₂CO₃ / DMF



12a (L=H), **12b** (L=D)

57% \downarrow 1.) catecholborane, 1.5 eq.
2.) HOAc (10 eq.)
3.) 30% KOH, reflux



13a (L=H), **13b** (L=D)