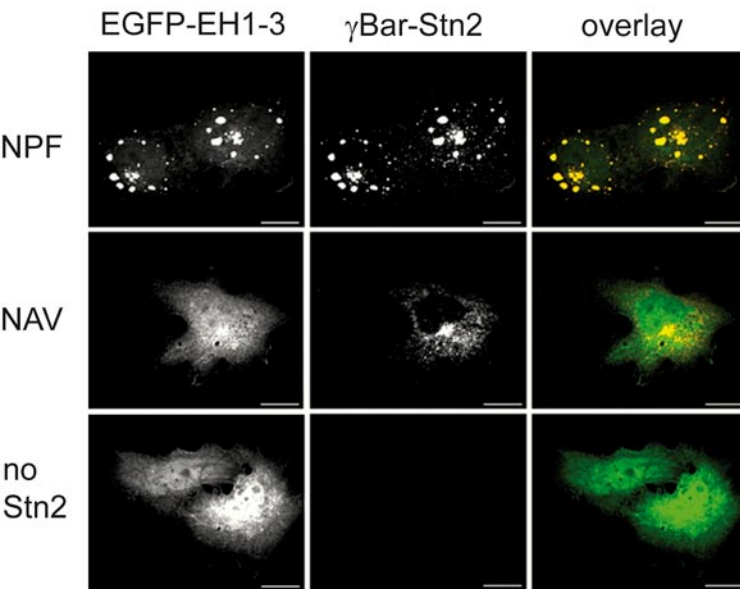


Supplementary Figure 2: Targeting of EGFP-Eps15 EH1-3 to the trans Golgi network (TGN) in cells overexpressing γ BAR-Stonin2.



Stonin2 mediated recruitment of Eps15-EH1-3 to the TGN. The co-localization of a chimeric protein of the stonin2 NPF region fused to a TGN-localized fragment of γ BAR (γ Bar-Stn2) and Eps15 EH1-3 was analyzed using anti-myc antibodies. EH1-3 is efficiently targeted to the TGN by stonin2 in an NPF dependent manner.