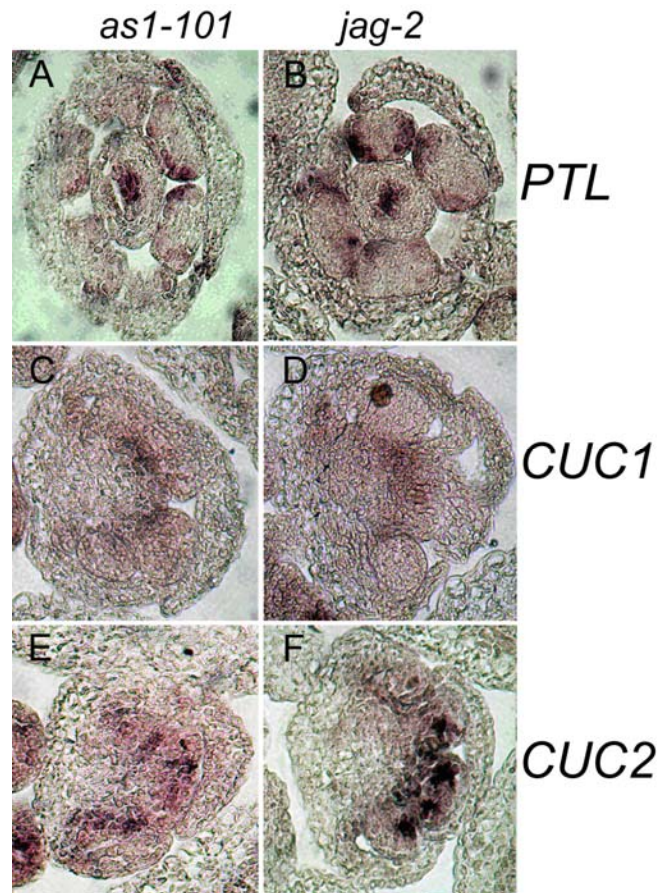


Supplemental Figure



Supplemental Fig. S1 Transverse sections showing expression patterns of *PTL*, *CUC1* and *CUC2* in *as1-101* and *jag-2* single mutant flowers. A and B, Expression of *PTL* in *as1-101* (A) and *jag-2* (B) flowers. C and D, Expression of *CUC1* in *as1-101* (C) and *jag-2* (D) flowers. E and F, Expression of *CUC2* in *as1-101* (E) and *jag-2* (F) flowers. Note that the expression pattern of *PTL*, *CUC1* and *CUC2* in *as1-101* and *jag-2* single mutant flowers were similar to that in the wild-type flowers (for comparison, see Fig. 5).