

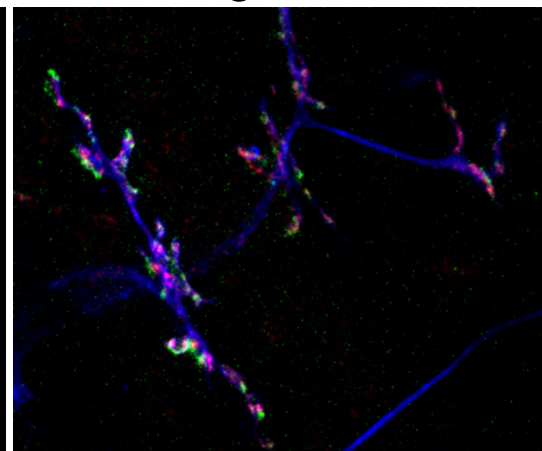
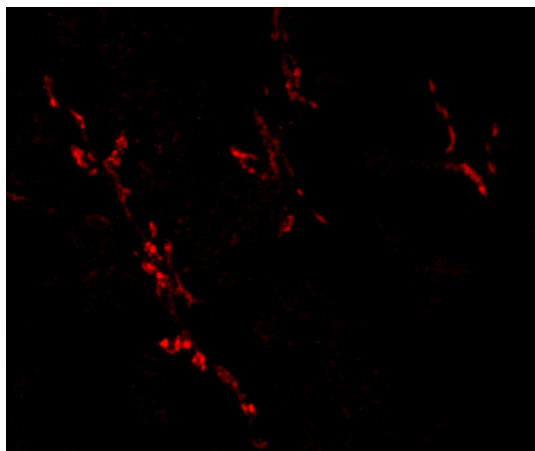
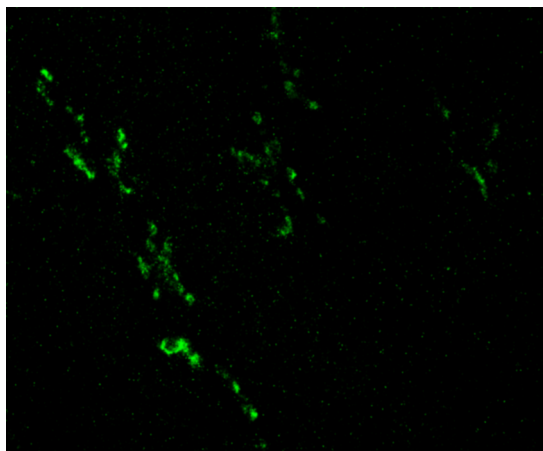
**Supplemental figure 1:** Glutamate receptors cluster in the absence of DVGLUT. Late-stage embryos were stained with antisera to DGluRIIA (green channel), DVGLUT (red channel), and HRP (blue channel). GluRIIA and DVGLUT extensively colocalize at wild type embryonic NMJs (WT, top panel). In *dvglut* null mutants (*Df(2L)dvglut<sup>2</sup>*, bottom panel), DGluRIIA localizes to NMJs normally despite the absence of DVGLUT. Scale bar represents 15  $\mu\text{m}$ .

DGluRIIA

DVGLUT

merge + HRP

WT



*Df(2L)dvglut<sup>2</sup>*

