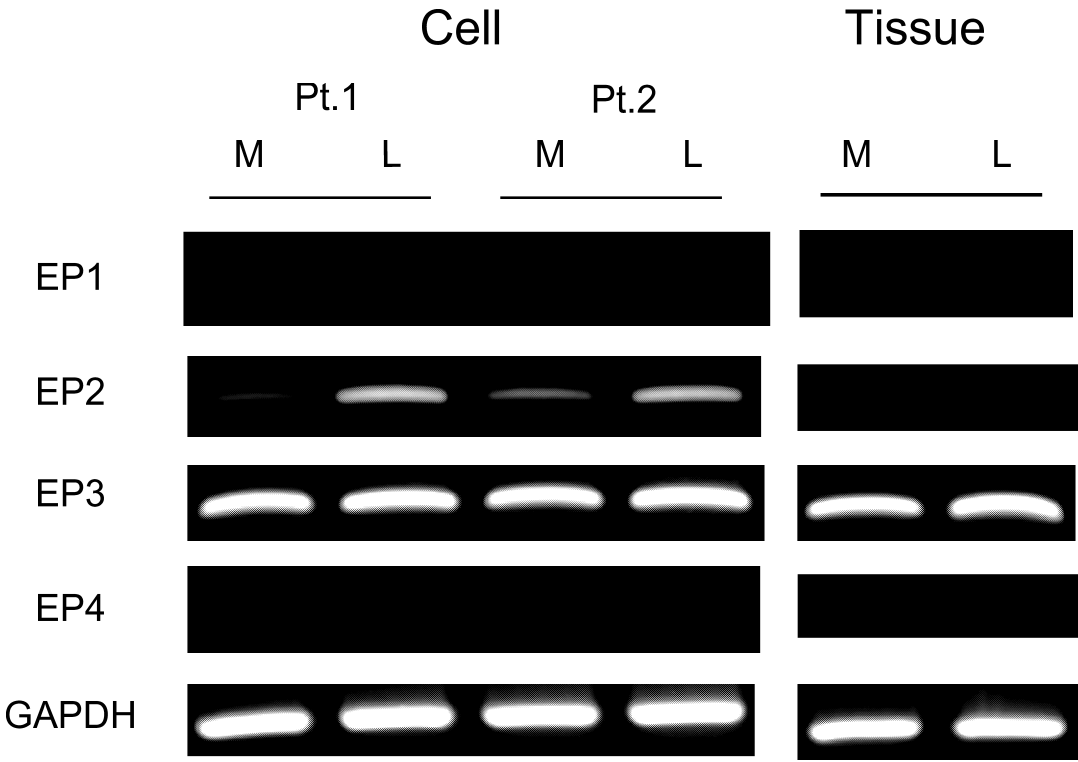


Ishikawa Supplemental Figure 5



Supplemental Figure 5. PGE₂ receptor expression in leiomyoma and corresponding myometrium.

PGE₂ receptor mRNA expression levels were measured by RT-PCR in primary cultured cells and freshly isolated tissues. GAPDH mRNA were measured simultaneously as internal controls. Primary cultured cells were prepared from freshly isolated leiomyoma and corresponding myometrium. Cell, primary cultured leiomyoma smooth muscle cell (L) or myometrial smooth muscle cell (M) ; Tissue, freshly isolated leiomyoma (L) or corresponding myometrium (M); Pt.1 , patient 1; Pt.2, patient 2; EP1-4, prostaglandin E₂ receptor subtype 1-4.