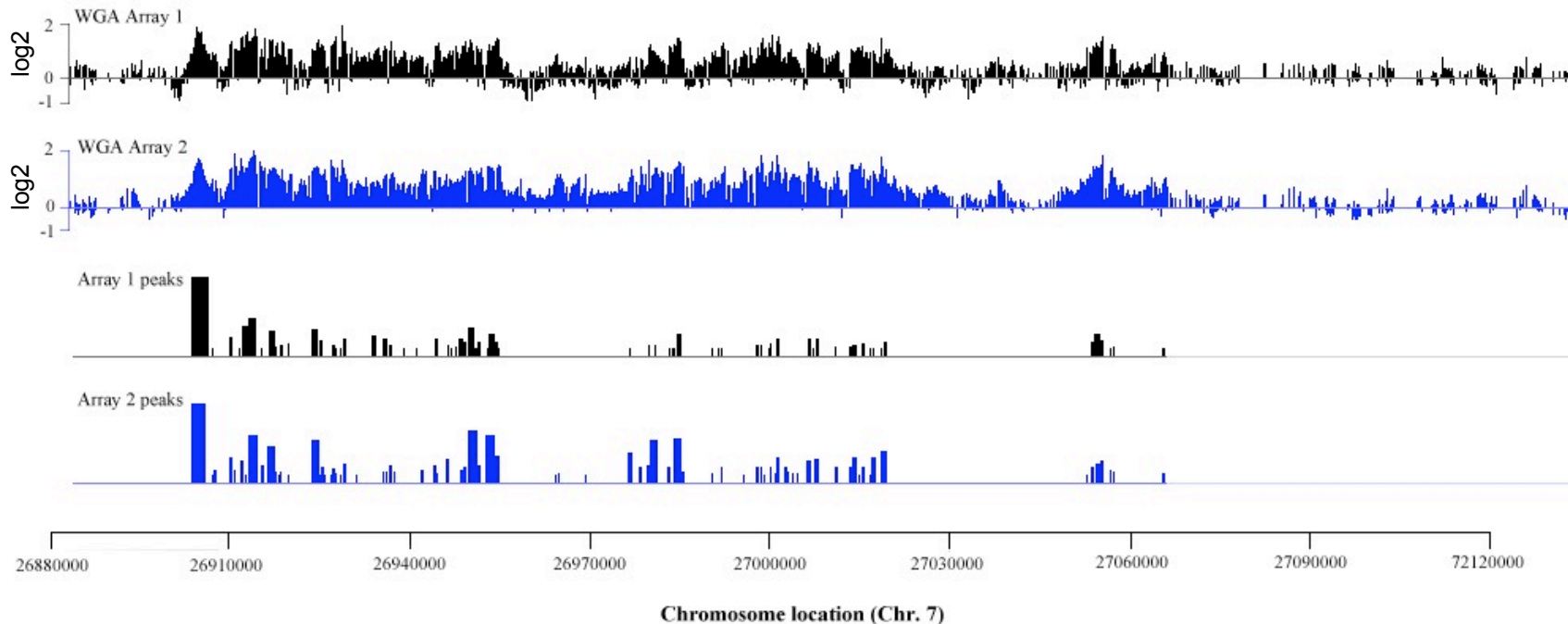


# O'Geen\_Figure S1



**Supplementary Figure 1:** Shown are the binding patterns of Oct4 on a region of human chromosome 7 obtained from two biologically independent sets of amplicons prepared using the GenomePlex whole genome amplification method. Also shown are the peaks that are called for the two arrays. Although the binding patterns on the two arrays are very similar throughout the entire region, the precise number and location of the called peaks differs in the two experiments. These differences are due to limitations in the peak-calling program; a broad peak with long shoulders is called as multiple peaks. The precise position of the different peaks, within a single binding region, can differ from array to array.