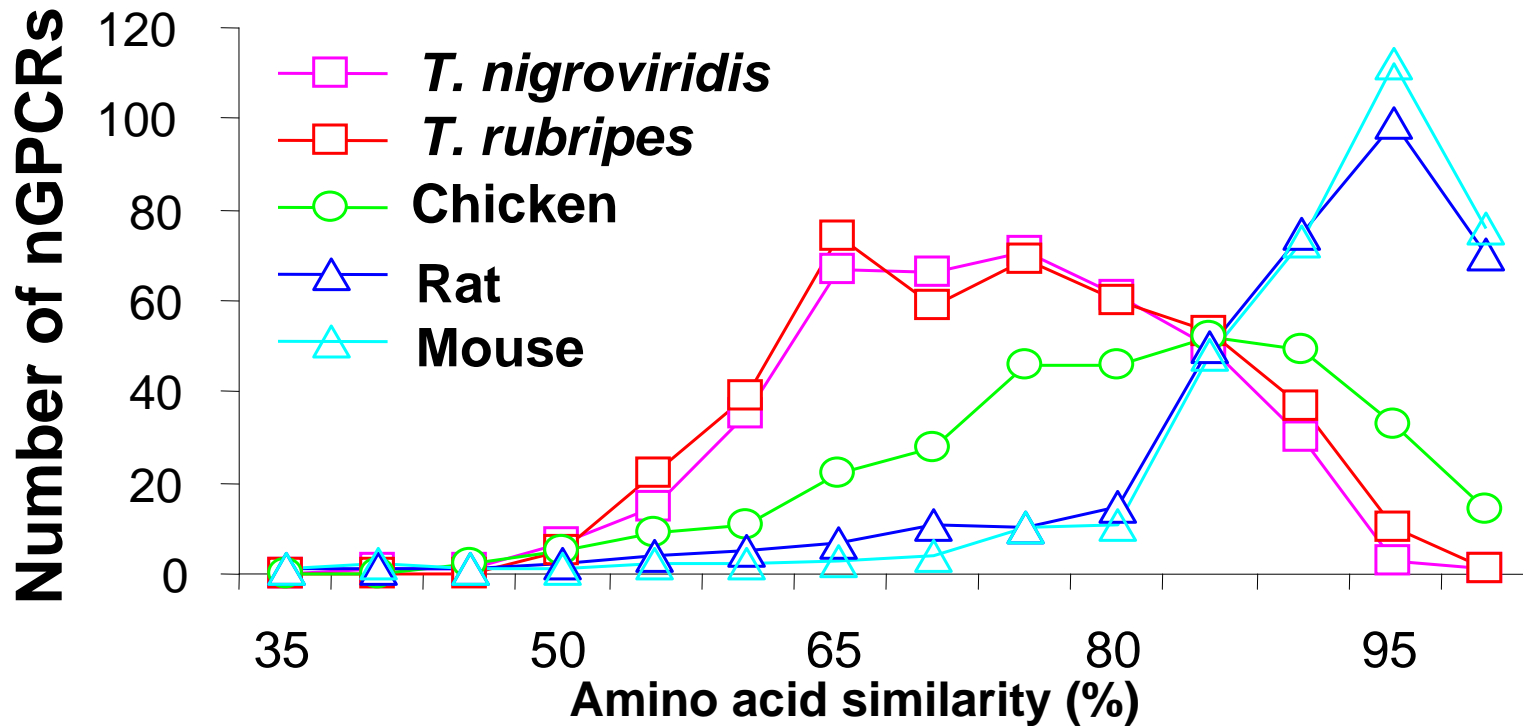


Fig. S2. Comparison of sequence similarity between human nGPCRs and orthologs or co-orthologs from rat, mouse, chicken, *T. nigroviridis*, and *T. rubripes*.



	Similarity, mean±SEM	Identity, mean±SEM
Human vs. rat	87.30±0.59	80.76±0.80
Human vs. mouse	88.77±0.55	82.99±0.70
Human vs. chicken	78.06±0.66	66.55±0.87
Human vs. <i>T. nigroviridis</i>	71.13±0.50	56.73±0.66
Human vs. <i>T. rubripes</i>	71.84±0.52	57.21±0.66