

Supplementary Figure 1.

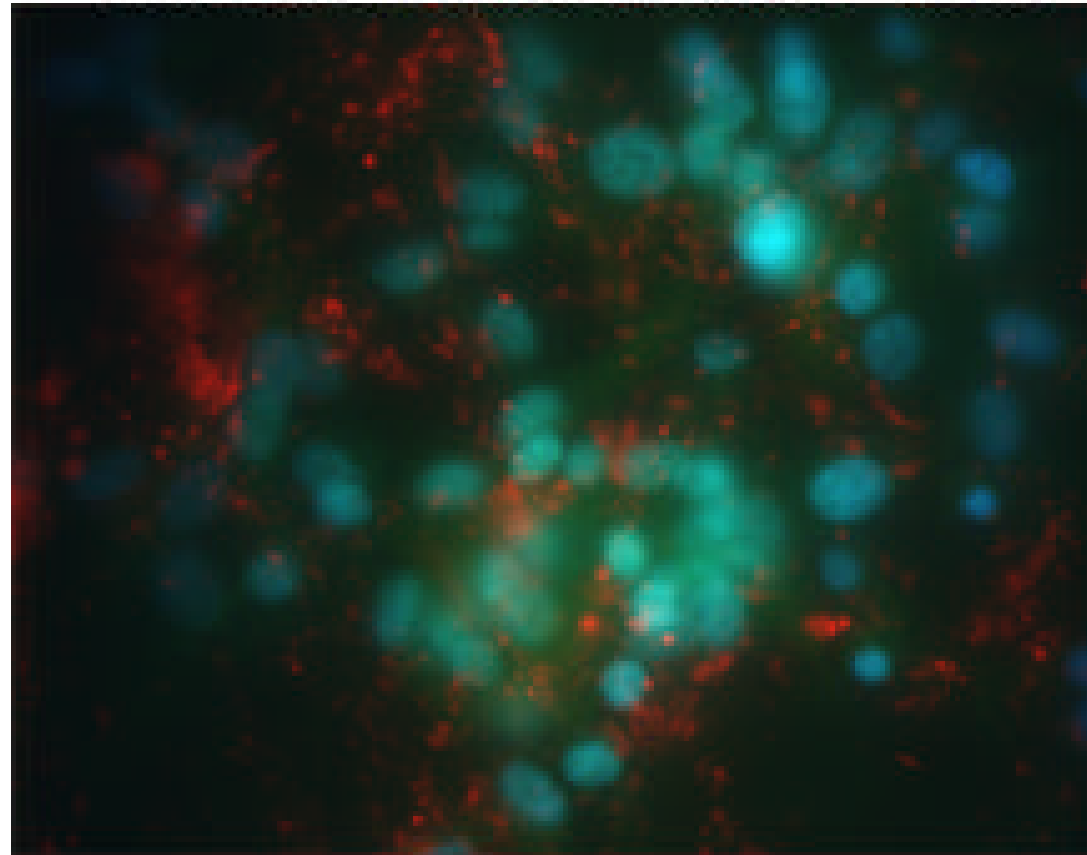
A: A control (scrambled) siRNA sequence was labeled with rhodamine to track the entry and transfection efficiency. U87 cells were transfected with control siRNA using a lipofectamine-based reagent, figure show greater than 80% cells transfected with the siRNA.

Supplementary Figure 2.

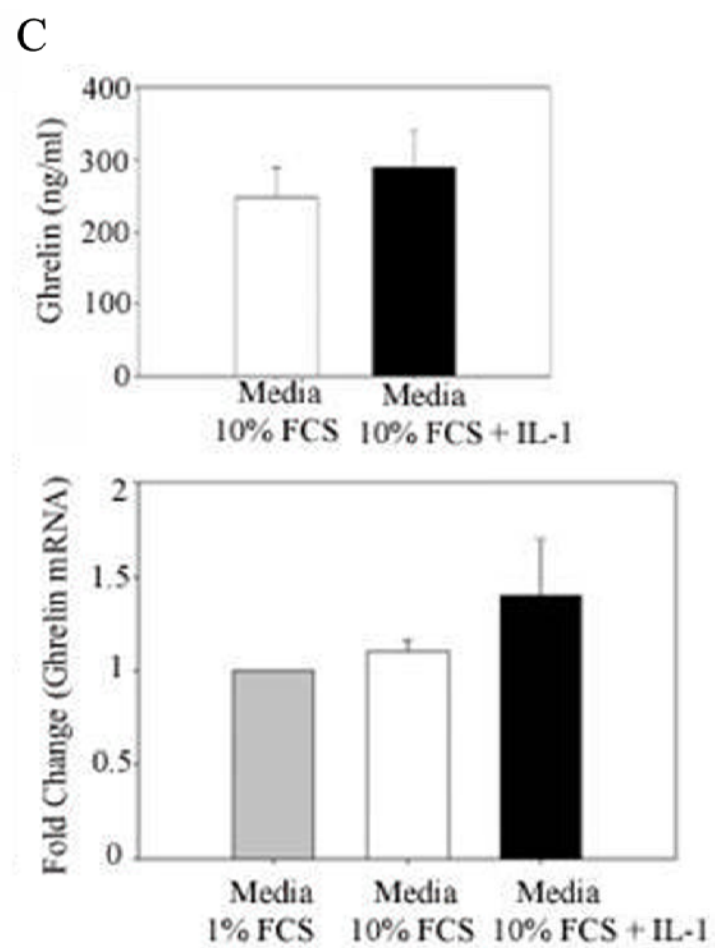
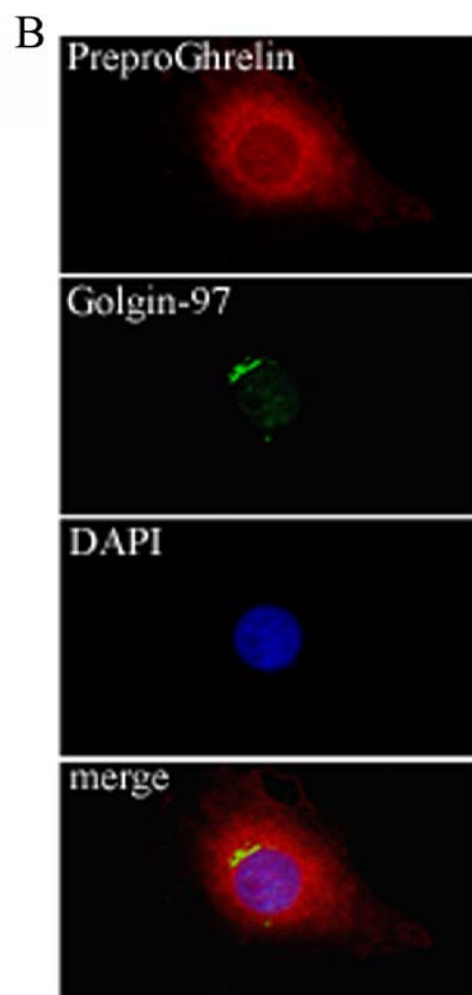
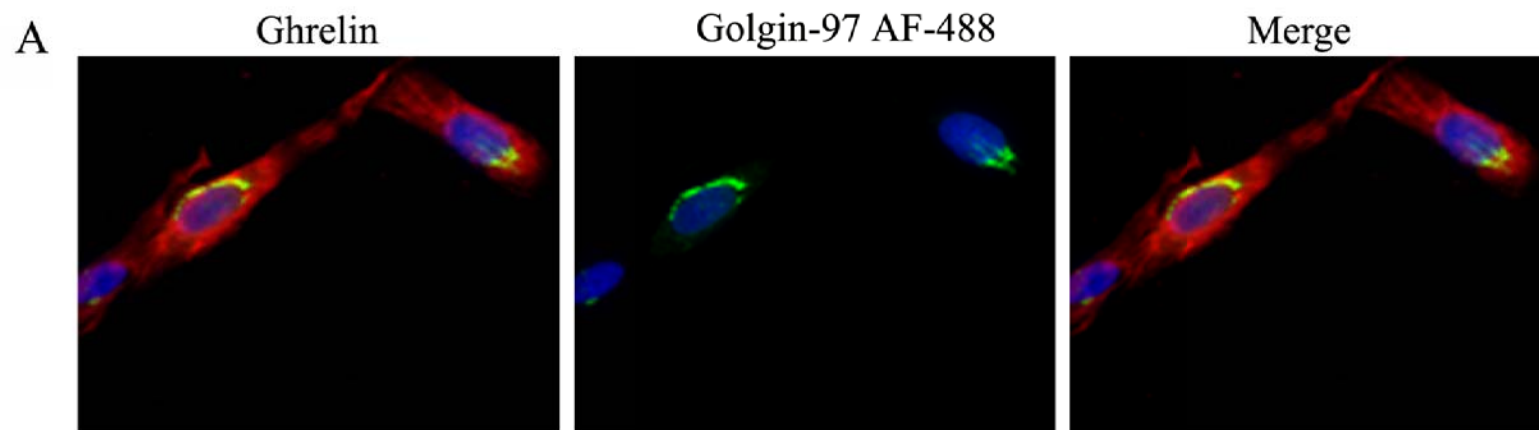
A: CCFSTTG1 cells were labeled with ghrelin-anti rabbit IgG and co-stained for anti mouse Golgin- 97 IgG. Nuclei were counterstained with DAPI, merges revealed no exclusive localization of mature ghrelin to the Golgi apparatus **B:** CCFSTTG1 cells labeled with pre pro ghrelin-anti rabbit IgG and co-stained for anti mouse Golgin-97 IgG. Nuclei were counterstained with DAPI, merges revealed wide distribution of PPG in the cytoplasm with no exclusive localization in the Golgi apparatus. **C:** Ghrelin mRNA and protein are expressed in CCFSTTG1 cells and are not regulated by IL-1 β .

CsiRNA Transfected U87 cells

A



Supplementary Figure 1
Dixit et al



Supplementary Figure 2. Dixit et al.