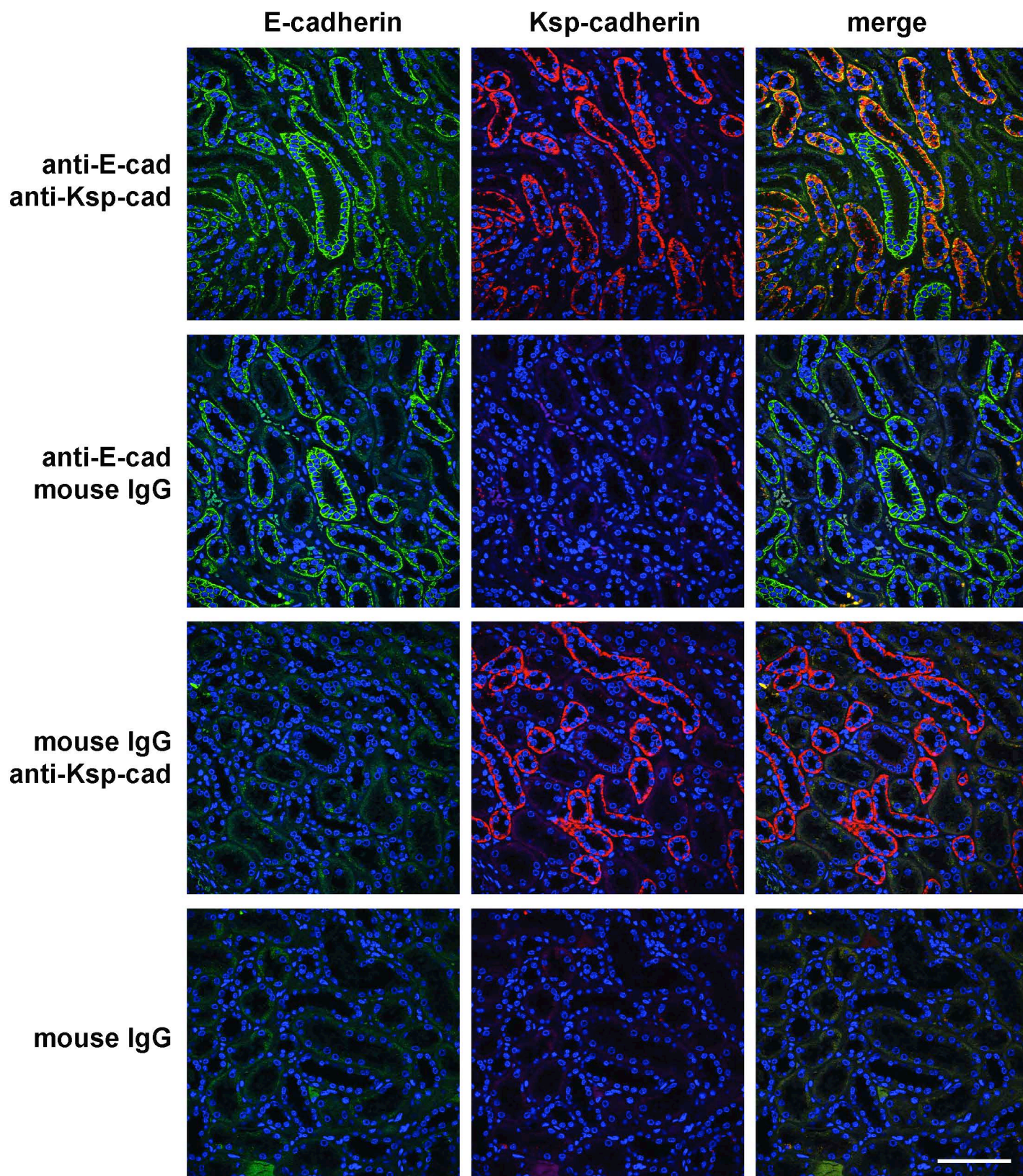


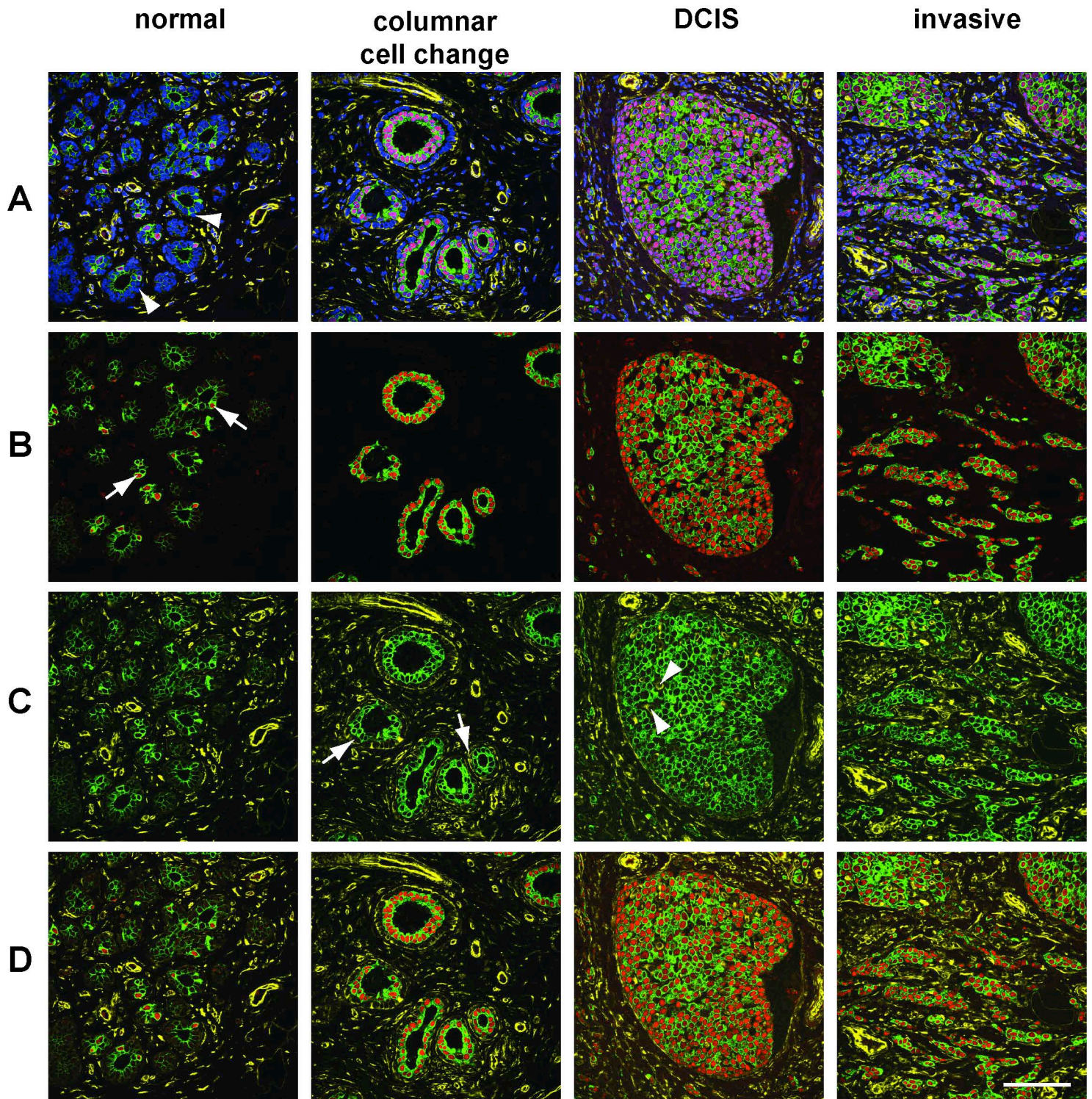
Expression of E-cadherin, Ksp-cadherin and collagen IV in kidney

Low power images from the slides shown in Figure 1. Confocal images were collected using a x20 lens sequentially in three channels. Arrows indicate tubules expressing both cadherins, arrowheads indicate tubules expressing neither cadherin, * indicates tubules expressing E-cadherin alone. Scale bar, 100 μ m.



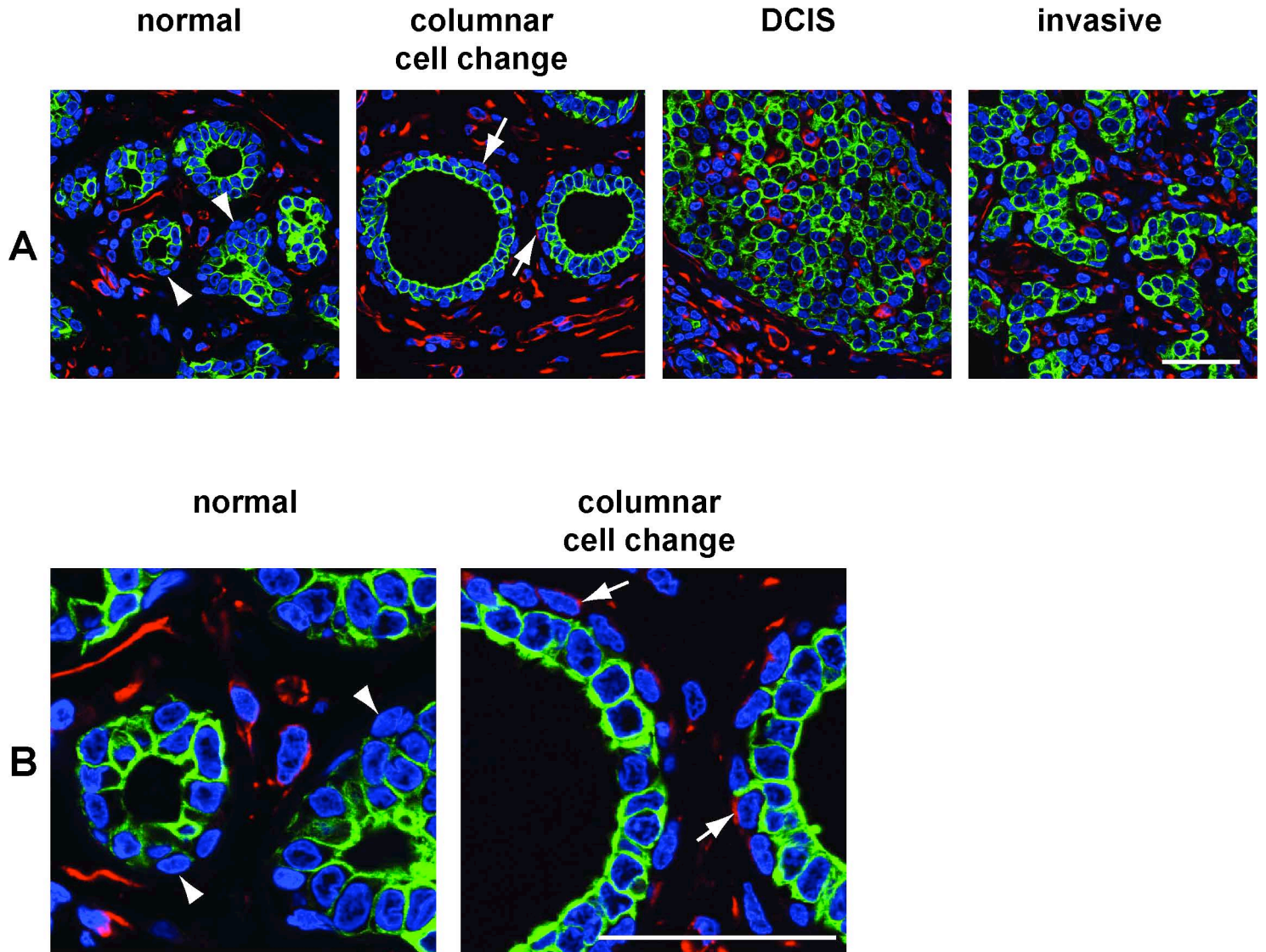
Confocal microscopy control staining

3 μm FFPE sections of adult human kidney were stained as described in Figure 1. As controls, primary antibodies alone or together were substituted with 2 $\mu\text{g}/\text{ml}$ mouse IgG. Confocal images were collected sequentially in 3 channels at the same setting for each sample. Images show no cross-reactivity of secondary antibodies or background staining of the secondary antibodies. Scale bar, 100 μm .



Expression of cyokeratin 8/18, oestrogen receptor and vimentin in normal human breast and breast cancer.

Low power images from the slides shown in Figure 2. Confocal images were collected using a x20 lens sequentially in four channels. In all images colours are as follows: Ck 8/18 (green), ER (red), vimentin (yellow), DAPI (blue). **A.** 4 colour images, arrowheads indicate Ck 8/18-negative myoepithelial cells. **B.** Ck 8/18 and ER, arrows indicate ER expression in luminal epithelial cells with high Ck 8/18 expression positive cells in the normal breast. **C.** Ck 8/18 and vimentin, arrows indicate a low level of vimentin expression in the myoepithelial cells of columnar cell change, arrowheads indicate vimentin-positive, Ck 8/18-negative cells within areas of DCIS. **D.** Ck 8/18, ER and vimentin. Scale bar, 100 μ m.



Upregulation of vimentin expression in the myoepithelial cells of columnar cell change.

Images identical to those shown in Figure 2 except that Ck 8/18 is shown in green, vimentin in red and DAPI in blue. Arrowheads indicated Ck 8/18-negative, vimentin-negative myoepithelial cells in the normal breast. Arrows indicate Ck 8/18-negative, vimentin-positive myoepithelial cells in columnar cell change. **A**, low power images, **B**, higher power images of selected regions on normal breast and columnar cell change. Scale bar, 50 μ m.